

For Research Use Only

IFITM2-specific Monoclonal antibody



Catalog Number: 66137-1-Ig

Featured Product

22 Publications

Basic Information

Catalog Number: 66137-1-Ig	GenBank Accession Number: NM_006435	Purification Method: Protein G purification
Size: 150ul , Concentration: 1700 µg/ml by Nanodrop and 880 µg/ml by Bradford method using BSA as the standard;	GeneID (NCBI): 10581	CloneNo.: 3D5F7
Source: Mouse	Full Name: interferon induced transmembrane protein 2 (1-8D)	Recommended Dilutions: WB 1:500-1:2000
Isotype: IgG1	Observed MW: 15 kDa	

Applications

Tested Applications: FC, WB, ELISA	Positive Controls: WB : HepG2 cells, recombinant protein
Cited Applications: IF, IHC, WB	
Species Specificity: human	
Cited Species: human	

Background Information

IFITM2, also named as 1-8D, belongs to the CD225 family. It is an IFN-induced antiviral protein that mediates cellular innate immunity to at least three major human pathogens, namely influenza A H1N1 virus, West Nile virus (WNV), and dengue virus (WNV), by inhibiting the early step(s) of replication. IFITM2 induces cell cycle arrest and mediates apoptosis by caspase activation and in p53-independent manner. It is overexpressed in colon carcinoma. IFITM2 is a novel pro-apoptotic gene that will provide new insights into the regulated cellular pathways to death. (PMID:19544527) This antibody is specific to IFITM2.

Notable Publications

Author	Pubmed ID	Journal	Application
Wing-Yiu Jason Lee	30266929	Sci Rep	WB
Xin Wang	33108395	PLoS Pathog	WB
Guoli Shi	30301809	Proc Natl Acad Sci U S A	WB

Storage

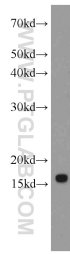
Storage:
Store at -20°C. Stable for one year after shipment.
Storage Buffer:
PBS with 0.02% sodium azide and 50% glycerol pH 7.3.
Aliquoting is unnecessary for -20°C storage

*** 20ul sizes contain 0.1% BSA

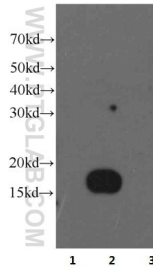
For technical support and original validation data for this product please contact:
T: 1 (888) 4PTGLAB (1-888-478-4522) (toll free in USA), or 1(312) 455-8498 (outside USA)
E: proteintech@ptglab.com
W: ptglab.com

This product is exclusively available under Proteintech Group brand and is not available to purchase from any other manufacturer.

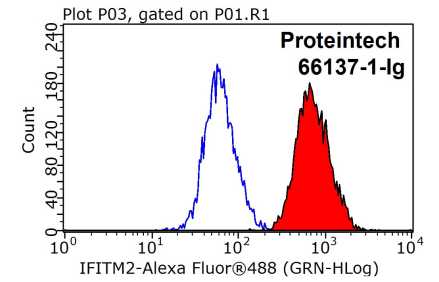
Selected Validation Data



HepG2 cells were subjected to SDS PAGE followed by western blot with 66137-1-Ig (IFITM2-specific antibody) at dilution of 1:1000 incubated at room temperature for 1.5 hours.



IFITM1 (Lane 1), IFITM2 (Lane 2) and IFITM3 (Lane 3) fusion proteins (20ng/lane) were subjected to SDS-PAGE followed by western blot with IFITM2 monoclonal antibody (66137-1-Ig) at dilution of 1:10,000.



1X10⁶ HeLa cells were stained with 0.2ug IFITM2-specific antibody (66137-1-Ig, red) and control antibody (blue). Fixed with 90% MeOH blocked with 3% BSA (30 min). Alexa Fluor 488-conjugated AffiniPure Goat Anti-Mouse IgG(H+L) with dilution 1:1000.