

For Research Use Only

# NUDT21 Monoclonal antibody

Catalog Number: 66335-1-Ig

Featured Product

3 Publications



## Basic Information

<b>Catalog Number:</b> 66335-1-Ig	<b>GenBank Accession Number:</b> BC001403	<b>Purification Method:</b> Protein G purification
<b>Size:</b> 150ul, Concentration: 1700 µg/ml by Nanodrop and 1000 µg/ml by Bradford method using BSA as the standard;	<b>GeneID (NCBI):</b> 11051	<b>CloneNo.:</b> 1C4C8
<b>Source:</b> Mouse	<b>Full Name:</b> nudix (nucleoside diphosphate linked moiety X)-type motif 21	<b>Recommended Dilutions:</b> WB 1:1000-1:6000 IHC 1:500-1:2000 IF 1:1000-1:4000
<b>Isotype:</b> IgG1	<b>Calculated MW:</b> 26 kDa	
<b>Immunogen Catalog Number:</b> AG12260	<b>Observed MW:</b> 27 kDa	

## Applications

### Tested Applications:

IF, IHC, WB, ELISA

### Cited Applications:

IF, IP, RIP, WB

### Species Specificity:

human, mouse

### Cited Species:

human

**Note-IHC: suggested antigen retrieval with TE buffer pH 9.0; (\*) Alternatively, antigen retrieval may be performed with citrate buffer pH 6.0**

### Positive Controls:

**WB** : NIH/3T3 cells, HEK-293 cells, HeLa cells, MCF-7 cells

**IHC** : human brain tissue, mouse brain tissue, mouse liver tissue

**IF** : HeLa cells, HepG2 cells

## Background Information

Cleavage and polyadenylation specific factor 5, 25 kDa (CPSF5, synonym: CFIM25) is one subunit of a cleavage factor required for 3' RNA cleavage and polyadenylation processing. The interaction of CPSF5 with the RNA is one of the earliest steps in the assembly of the 3' end processing complex and facilitates the recruitment of other processing factors.

## Notable Publications

Author	Pubmed ID	Journal	Application
Zhijie Hu	36073763	J Mol Cell Biol	WB
Seung Wook Yang	31980388	Mol Cell	IP
Nasha Zhang	37999979	Cell Rep	WB,IF,IP,RIP

## Storage

### Storage:

Store at -20°C. Stable for one year after shipment.

### Storage Buffer:

PBS with 0.02% sodium azide and 50% glycerol pH 7.3.

Aliquoting is unnecessary for -20°C storage

\*\*\* 20ul sizes contain 0.1% BSA

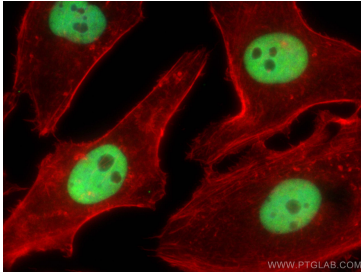
For technical support and original validation data for this product please contact:

T: 1 (888) 4PTGLAB (1-888-478-4522) (toll free in USA), or 1(312) 455-8498 (outside USA)

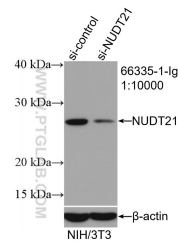
E: [proteintech@ptglab.com](mailto:proteintech@ptglab.com)  
W: [ptglab.com](http://ptglab.com)

This product is exclusively available under Proteintech Group brand and is not available to purchase from any other manufacturer.

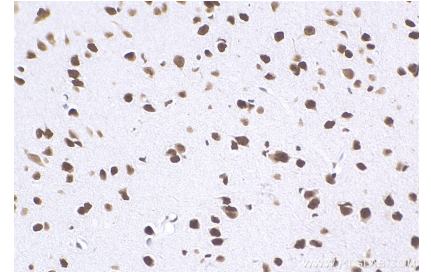
## Selected Validation Data



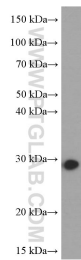
Immunofluorescent analysis of (4% PFA) fixed HeLa cells using NUDT21 antibody (66335-1-Ig, Clone: 1C4C8) at dilution of 1:2000 and CoraLite®488-Conjugated AffiniPure Goat Anti-Mouse IgG(H+L), CL594-phalloidin (red).



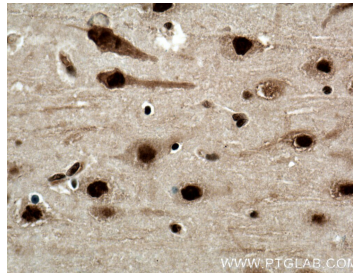
WB result of NUDT21 antibody (66335-1-Ig; 1:10000; incubated at room temperature for 1.5 hours) with sh-Control and sh-NUDT21 transfected NIH/3T3 cells.



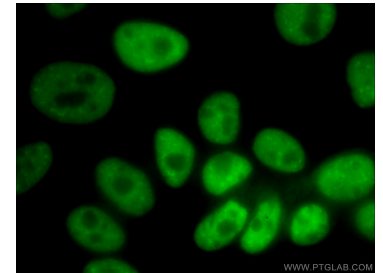
Immunohistochemical analysis of paraffin-embedded mouse brain tissue slide using 66335-1-Ig (NUDT21 antibody) at dilution of 1:1000 (under 40x lens). Heat mediated antigen retrieval with Tris-EDTA buffer (pH 9.0).



NIH/3T3 cells were subjected to SDS PAGE followed by western blot with 66335-1-Ig (NUDT21 antibody) at dilution of 1:3000 incubated at room temperature for 1.5 hours.



Immunohistochemical analysis of paraffin-embedded human brain tissue slide using 66335-1-Ig (NUDT21 antibody) at dilution of 1:1000 (under 40x lens). Heat mediated antigen retrieval with Tris-EDTA buffer (pH 9.0).



Immunofluorescent analysis of (10% Formaldehyde) fixed HepG2 cells using 66335-1-Ig (NUDT21 antibody) at dilution of 1:400 and Alexa Fluor 488-conjugated AffiniPure Goat Anti-Mouse IgG(H+L).