

For Research Use Only

Mouse IgG1 isotype control Monoclonal antibody



Catalog Number: 66360-1-Ig **8 Publications**

Basic Information

Catalog Number: 66360-1-Ig
Size: 150ul , Concentration: 1000 µg/ml by Nanodrop;
Source: Mouse
Isotype: IgG1

GenBank Accession Number:
GeneID (NCBI):
Full Name:

Purification Method: Protein A purification
CloneNo.: 1F8D3
Recommended Dilutions: WB 1:500-1:2000

Applications

Tested Applications: FC, WB, ELISA
Cited Applications: Cell treatment, CoIP, IHC, IP, RIP, WB
Species Specificity: Megathura crenulata
Cited Species: mouse

Positive Controls: WB : ,

Background Information

This antibody is used as the isotype control of mouse IgG1 (Kappa). It can be used as the isotype control in Flow Cytometry, Immuno-Precipitation and other experiments. The immunogen of this antibody is Keyhole Limpet Hemocyanin (KLH).

Notable Publications

Author	Pubmed ID	Journal	Application
Chujie Ding	35913801	FASEB J	CoIP
Yuting Yang	34242624	Exp Cell Res	IP
Tomohiro Kawasumi	34989246	Am J Rhinol Allergy	IHC

Storage

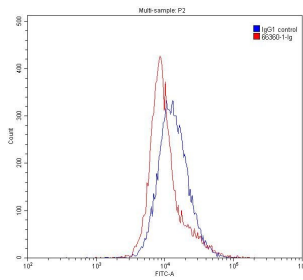
Storage: Store at -20°C. Stable for one year after shipment.
Storage Buffer: PBS with 0.02% sodium azide and 50% glycerol pH 7.3.
Aliquoting is unnecessary for -20°C storage

*** 20ul sizes contain 0.1% BSA

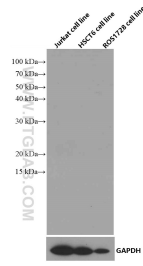
For technical support and original validation data for this product please contact:
T: 1 (888) 4PTGLAB (1-888-478-4522) (toll free in USA), or 1(312) 455-8498 (outside USA)
E: proteintech@ptglab.com
W: ptglab.com

This product is exclusively available under Proteintech Group brand and is not available to purchase from any other manufacturer.

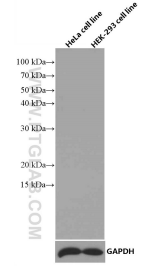
Selected Validation Data



1X10⁶ K-562 cells were stained with 0.20ug Mouse IgG1 isotype control antibody (66360-1-Ig, red) and another control antibody (blue). Fixed with 90% MeOH.



Various lysates were subjected to SDS PAGE followed by western blot with 66360-1-Ig (Mouse IgG1 isotype control antibody) at dilution of 1:1000 incubated at room temperature for 1.5 hours.



Various lysates were subjected to SDS PAGE followed by western blot with 66360-1-Ig (Mouse IgG1 isotype control antibody) at dilution of 1:1000 incubated at room temperature for 1.5 hours.