

For Research Use Only

# Occludin Monoclonal antibody

Catalog Number: 66378-1-Ig

Featured Product

79 Publications



## Basic Information

### Catalog Number:

66378-1-Ig

### Size:

150ul, Concentration: 1000 µg/ml by Nanodrop;

### Source:

Mouse

### Isotype:

IgG1

### Immunogen Catalog Number:

AG4057

### GenBank Accession Number:

BC029886

### GeneID (NCBI):

4950

### UNIPROT ID:

Q16625

### Full Name:

occludin

### Calculated MW:

522 aa, 59 kDa

### Observed MW:

59 kDa

### Purification Method:

Protein G purification

### CloneNo.:

1D3C4

### Recommended Dilutions:

WB 1:5000-1:50000

IHC 1:50-1:500

IF 1:800-1:3200

## Applications

### Tested Applications:

WB, IHC, ELISA

### Cited Applications:

WB, IHC

### Species Specificity:

human, mouse, rat, pig

### Cited Species:

human, rat, sheep, mouse, pig, bovine

**Note-IHC: suggested antigen retrieval with TE buffer pH 9.0; (\*) Alternatively, antigen retrieval may be performed with citrate buffer pH 6.0**

### Positive Controls:

WB: HUVEC cells, Jurkat cells, mouse colon tissue, LNCaP cells, U2OS cells, pig colon tissue, rat colon tissue, 4T1 cells, HEK-293 cells

IHC: human colon cancer tissue, mouse kidney tissue

IF: Caco-2 cells, MCF-7 cells

## Background Information

Occludin is an integral membrane protein located at the tight junction. It is a tetraspanin protein with four transmembrane domains, intracellular N and C termini and two extracellular loops. Occludin plays a role in the formation and regulation of the tight junction paracellular permeability barrier. Occludin can exist in different isoforms, owing to modifications at the posttranscriptional and posttranslational levels, the monomeric occludin migrates as 53-65 kDa on SDS-PAGE (PMID: 22083955; 19457074).

## Notable Publications

Author	Pubmed ID	Journal	Application
Dayun Feng	36179025	Sci Adv	WB
Yingying Wang	36174863	Int J Biol Macromol	WB
Cantao Yang	36108982	Food Chem Toxicol	WB

## Storage

### Storage:

Store at -20°C. Stable for one year after shipment.

### Storage Buffer:

PBS with 0.02% sodium azide and 50% glycerol pH 7.3.

Aliquoting is unnecessary for -20°C storage

\*\*\* 20ul sizes contain 0.1% BSA

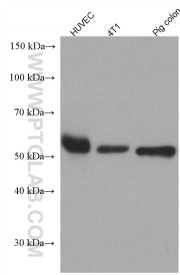
For technical support and original validation data for this product please contact:

T: 1 (888) 4PTGLAB (1-888-478-4522) (toll free in USA), or 1(312) 455-8498 (outside USA)

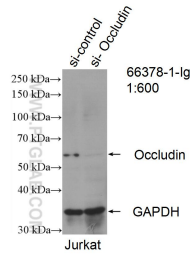
E: proteintech@ptglab.com  
W: ptglab.com

This product is exclusively available under Proteintech Group brand and is not available to purchase from any other manufacturer.

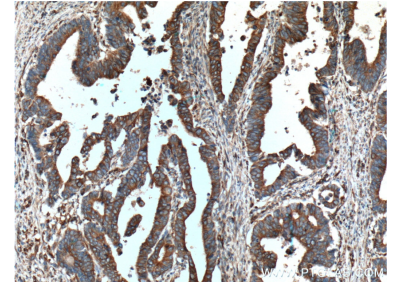
## Selected Validation Data



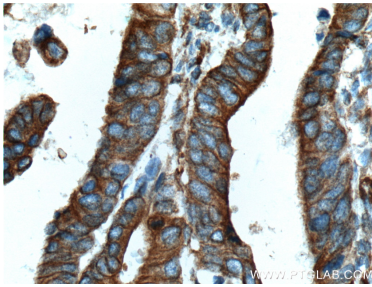
Various lysates were subjected to SDS PAGE followed by western blot with 66378-1-Ig (Occludin antibody) at dilution of 1:10000 incubated at room temperature for 1.5 hours.



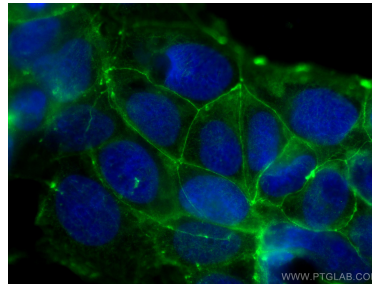
WB result of Occludin antibody (66378-1-Ig; 1:600; incubated at room temperature for 1.5 hours) with sh-Control and sh-Occludin transfected Jurkat cells.



Immunohistochemical analysis of paraffin-embedded human colon cancer tissue slide using 66378-1-Ig (Occludin antibody) at dilution of 1:400 (under 10x lens. Heat mediated antigen retrieval with Tris-EDTA buffer (pH 9.0).



Immunohistochemical analysis of paraffin-embedded human colon cancer tissue slide using 66378-1-Ig (Occludin antibody) at dilution of 1:400 (under 40x lens. Heat mediated antigen retrieval with Tris-EDTA buffer (pH 9.0).



Immunofluorescent analysis of (-20°C Ethanol) fixed Caco-2 cells using Occludin antibody (66378-1-Ig, Clone: 1D3C4 ) at dilution of 1:1600 and CoraLite® 488-Conjugated AffiniPure Goat Anti-Mouse IgG(H+L).