

For Research Use Only

# TLR5 Monoclonal antibody

Catalog Number: 66570-1-Ig



## Basic Information

|   |  |  |
|---|--|--|
| <b>Catalog Number:</b><br>66570-1-Ig  | <b>GenBank Accession Number:</b><br>BC109119 | <b>Purification Method:</b><br>Protein G purification                |
| <b>Size:</b><br>150ul, Concentration: 1500 µg/ml by<br>Nanodrop and 1000 µg/ml by Bradford<br>method using BSA as the standard; | <b>GeneID (NCBI):</b><br>7100                | <b>CloneNo.:</b><br>4B3D2  |
| <b>Source:</b><br>Mouse   | <b>Full Name:</b><br>toll-like receptor 5    | <b>Recommended Dilutions:</b><br>WB 1:1000-1:6000<br>IF 1:400-1:1600 |
| <b>Isotype:</b><br>IgG1   | <b>Calculated MW:</b><br>858 aa, 98 kDa      |  |
| <b>Immunogen Catalog Number:</b><br>AG13840   | <b>Observed MW:</b><br>100 kDa               |  |

## Applications

|   |   |
|---|---|
| <b>Tested Applications:</b><br>FC, IF, WB, ELISA      | <b>Positive Controls:</b>   |
| <b>Species Specificity:</b><br>Human, Pig, Mouse, Rat | <b>WB:</b> A549 cells, THP-1 cells, rat spleen tissue, HeLa cells, RAW 264.7 cells<br><b>IF:</b> THP-1 cells, |

## Background Information

TLR5 belongs to the Toll-like receptor family which are important in the innate immune response to pathogens. TLRs are highly conserved from Drosophila to humans and share structural and functional similarities. TLR5 is known to recognize bacterial flagellin from invading mobile bacteria. TLR5 acts via MYD88 and TRAF6, leading to NF-kappa-B activation, cytokine secretion and the inflammatory response. Mutations in TLR5 gene have been associated with both resistance and susceptibility to systemic lupus erythematosus, and susceptibility to Legionnaire disease.

## Storage

**Storage:**  
Store at -20°C. Stable for one year after shipment.  
**Storage Buffer:**  
PBS with 0.02% sodium azide and 50% glycerol pH 7.3.  
Aliquoting is unnecessary for -20°C storage

\*\*\* 20ul sizes contain 0.1% BSA

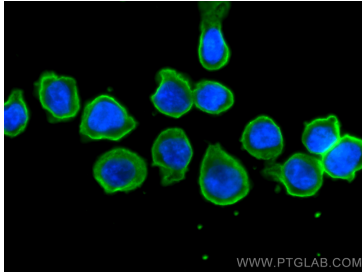
For technical support and original validation data for this product please contact:

T: 1 (888) 4PTGLAB (1-888-478-4522) (toll free  
in USA), or 1(312) 455-8498 (outside USA)

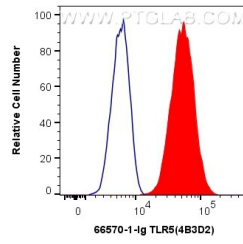
E: proteintech@ptglab.com  
W: ptglab.com

This product is exclusively available under Proteintech Group brand and is not available to purchase from any other manufacturer.

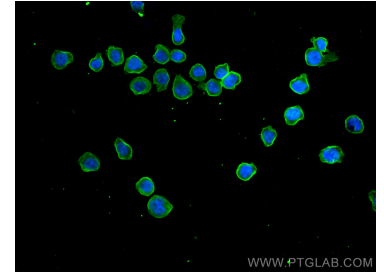
## Selected Validation Data



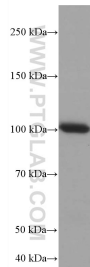
Immunofluorescent analysis of (4% PFA) fixed THP-1 cells using TLR5 antibody (66570-1-Ig, Clone: 4B3D2 ) at dilution of 1:800 and CoraLite@488-Conjugated AffiniPure Goat Anti-Mouse IgG(H+L).



1X10<sup>6</sup> THP-1 cells were intracellularly stained with 0.4 ug Anti-Human TLR5 (66570-1-Ig, Clone:4B3D2) and CoraLite@488-Conjugated AffiniPure Goat Anti-Mouse IgG(H+L) at dilution 1:1000 (red), or 0.4 ug Mouse IgG1 Isotype Control (MOPC-21) (65124-1-Ig, Clone: MOPC-21) (blue). Cells were fixed with 4% PFA and permeabilized with Flow Cytometry Perm Buffer (PF00011-C).



Immunofluorescent analysis of (4% PFA) fixed THP-1 cells using TLR5 antibody (66570-1-Ig, Clone: 4B3D2 ) at dilution of 1:800 and CoraLite@488-Conjugated AffiniPure Goat Anti-Mouse IgG(H+L).



A549 cells were subjected to SDS PAGE followed by western blot with 66570-1-Ig (TLR5 antibody) at dilution of 1:3000 incubated at room temperature for 1.5 hours.