

For Research Use Only

S100 Beta Monoclonal antibody

Catalog Number: 66616-1-Ig **14 Publications**



Basic Information

Catalog Number: 66616-1-Ig	GenBank Accession Number: BC001766	Purification Method: Protein G purification
Size: 150ul, Concentration: 1000 µg/ml by Nanodrop;	GeneID (NCBI): 6285	CloneNo.: 1G10F4
Source: Mouse	UNIPROT ID: P04271	Recommended Dilutions: WB 1:1000-1:4000 IHC 1:50-1:500 IF 1:200-1:800
Isotype: IgG1	Full Name: S100 calcium binding protein B	
Immunogen Catalog Number: AG7440	Calculated MW: 11 kDa	
	Observed MW: 11 kDa	

Applications

Tested Applications: WB, IF, IHC, ELISA	Positive Controls: WB : rat brain tissue, C6 cells, pig brain tissue IHC : human malignant melanoma tissue, human appendicitis tissue, mouse brain tissue, rat brain tissue IF : rat brain tissue,
Cited Applications: WB, IF, IHC	
Species Specificity: Human, mouse, pig, rat	
Cited Species: human, rat, mouse	

Note-IHC: suggested antigen retrieval with TE buffer pH 9.0; (*) Alternatively, antigen retrieval may be performed with citrate buffer pH 6.0

Background Information

S100B is a member of the S100 family of proteins containing 2 EF-hand calcium-binding motifs and has been implicated in the regulation of cellular activities such as metabolism, motility and proliferation. In the nervous system, S100B is constitutively released by astrocytes into the extracellular space and at nanomolar concentrations, it can promote neurite outgrowth and protect neurons against oxidative stress. Within the central nervous system (CNS), S100B is thought to be a marker for astroglial activation, linking astrocyte dysfunction to schizophrenia. In addition to astrocytes, S100B is released from many cell types, such as, adipocytes, chondrocytes, cardiomyocytes and lymphocytes. Serum S100B represents a new biomarker for mood disorders.

Notable Publications

Author	Pubmed ID	Journal	Application
Vedad Delic	36435806	Acta Neuropathol Commun	WB
Zhaoyang Wu	36370841	Exp Neurol	IF
Zhigang Wang	34118692	Transl Oncol	IF

Storage

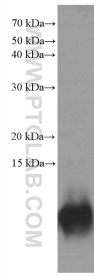
Storage:
Store at -20°C. Stable for one year after shipment.
Storage Buffer:
PBS with 0.02% sodium azide and 50% glycerol pH 7.3.
Aliquoting is unnecessary for -20°C storage

*** 20ul sizes contain 0.1% BSA

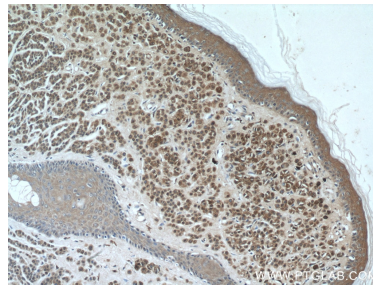
For technical support and original validation data for this product please contact:
T: 1 (888) 4PTGLAB (1-888-478-4522) (toll free in USA), or 1(312) 455-8498 (outside USA)
E: proteintech@ptglab.com
W: ptglab.com

This product is exclusively available under Proteintech Group brand and is not available to purchase from any other manufacturer.

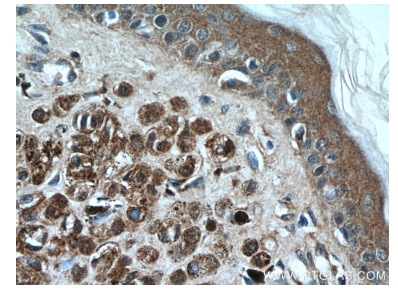
Selected Validation Data



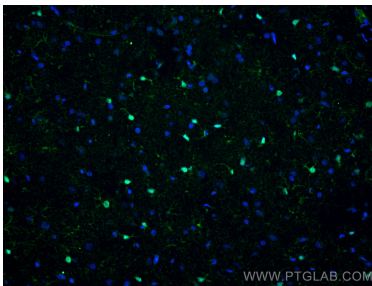
rat brain tissue were subjected to SDS PAGE followed by western blot with 66616-1-Ig (S100B antibody) at dilution of 1:2000 incubated at room temperature for 1.5 hours.



Immunohistochemical analysis of paraffin-embedded human malignant melanoma tissue slide using 66616-1-Ig (S100B antibody) at dilution of 1:200 (under 10x lens).



Immunohistochemical analysis of paraffin-embedded human malignant melanoma tissue slide using 66616-1-Ig (S100B antibody) at dilution of 1:200 (under 40x lens).



Immunofluorescent analysis of (4% PFA) fixed rat brain tissue using S100 Beta antibody (66616-1-Ig, Clone: 1G10F4) at dilution of 1:400 and CoraLite®488-Conjugated AffiniPure Goat Anti-Mouse IgG(H+L).