

For Research Use Only

TLR2 Monoclonal antibody

Catalog Number: 66645-1-Ig

Featured Product

16 Publications



Basic Information

Catalog Number: 66645-1-Ig	GenBank Accession Number: BC033756	Purification Method: Protein A purification
Size: 150ul, Concentration: 1700 µg/ml by Nanodrop and 1000 µg/ml by Bradford method using BSA as the standard;	GeneID (NCBI): 7097	CloneNo.: 1C1D3
Source: Mouse	UNIPROT ID: O60603	Recommended Dilutions: WB 1:500-1:2000 IHC 1:200-1:800 IF 1:200-1:800
Isotype: IgG2a	Full Name: toll-like receptor 2	
Immunogen Catalog Number: AG25626	Calculated MW: 784 aa, 90 kDa	
	Observed MW: 90-100 kDa	

Applications

Tested Applications: WB, IF, IHC, ELISA	Positive Controls: WB : THP-1 cells, U-937 cells IHC : human liver tissue, IF : THP-1 cells,
Cited Applications: WB, IF, IHC	
Species Specificity: Human	
Cited Species: human, mouse	

Note-IHC: suggested antigen retrieval with TE buffer pH 9.0; (*) Alternatively, antigen retrieval may be performed with citrate buffer pH 6.0

Background Information

TLR2, also known as CD282, is a member of the Toll-like receptor (TLR) family. TLR receptors are type I integral transmembrane glycoproteins which play a fundamental role in pathogen recognition and activation of innate immunity. TLR2 is expressed by immune cells including monocytes/macrophages, polymorphonuclear leukocytes (PMLs) and dendritic cells, and is also expressed by some non-immune cells including endothelial and epithelial cells (PMID: 21428911; 22566960). TLR2 forms heterodimers with TLR1 and TLR6, which is the initial step in a cascade of events leading to significant innate immune responses, development of adaptive immunity to pathogens and protection from immune sequelae related to infection with these pathogens (PMID: 22566960).

Notable Publications

Author	Pubmed ID	Journal	Application
Xiaotong Xu	36188596	Front Pharmacol	WB
Zhenglin Chang	36389789	Front Immunol	IHC
Yutao Ye	35432274	Front Microbiol	WB

Storage

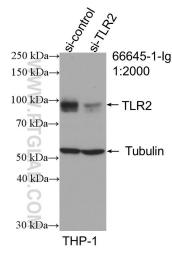
Storage:
Store at -20°C. Stable for one year after shipment.
Storage Buffer:
PBS with 0.02% sodium azide and 50% glycerol pH 7.3.
Aliquoting is unnecessary for -20°C storage

*** 20ul sizes contain 0.1% BSA

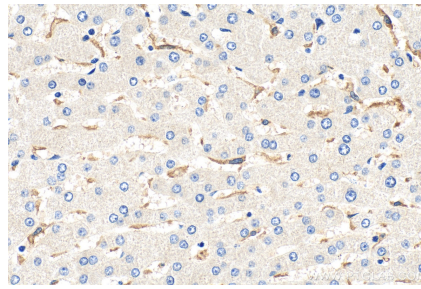
For technical support and original validation data for this product please contact:
T: 1 (888) 4PTGLAB (1-888-478-4522) (toll free in USA), or 1(312) 455-8498 (outside USA)
E: proteintech@ptglab.com
W: ptglab.com

This product is exclusively available under Proteintech Group brand and is not available to purchase from any other manufacturer.

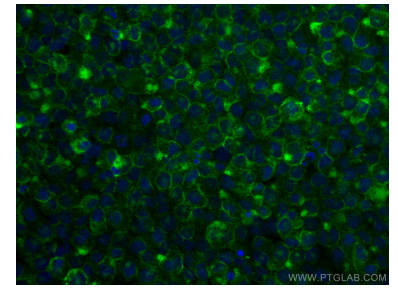
Selected Validation Data



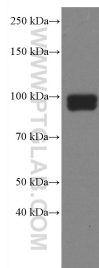
WB result of TLR2 antibody (66645-1-Ig; 1:2000; incubated at room temperature for 1.5 hours) with sh-Control and sh-TLR2 transfected THP-1 cells.



Immunohistochemical analysis of paraffin-embedded human liver tissue slide using 66645-1-Ig (TLR2 antibody) at dilution of 1:400 (under 40x lens). Heat mediated antigen retrieval with Tris-EDTA buffer (pH 9.0).



Immunofluorescent analysis of (4% PFA) fixed THP-1 cells using TLR2 antibody (66645-1-Ig, Clone: 1C1D3) at dilution of 1:400 and CoraLite®488-Conjugated AffiniPure Goat Anti-Mouse IgG(H+L).



THP-1 cells were subjected to SDS PAGE followed by western blot with 66645-1-Ig (TLR2 antibody) at dilution of 1:2000 incubated at room temperature for 1.5 hours.