

For Research Use Only

IFIT3 Monoclonal antibody

Catalog Number: 67208-1-Ig



Basic Information

Catalog Number: 67208-1-Ig	GenBank Accession Number: BC004977	Purification Method: Protein A purification
Size: 150ul , Concentration: 1700 µg/ml by Nanodrop and 1000 µg/ml by Bradford method using BSA as the standard;	GeneID (NCBI): 3437	CloneNo.: 2C8B10
Source: Mouse	Full Name: IFIT3	Recommended Dilutions: WB 1:1000-1:6000 IHC 1:150-1:600 IF 1:200-1:800
Isotype: IgG2a	Calculated MW: 56 kDa	
Immunogen Catalog Number: AG7518	Observed MW: 60 kDa	

Applications

Tested Applications:

IF, IHC, WB, ELISA

Species Specificity:

Human

**Note-IHC: suggested antigen retrieval with
TE buffer pH 9.0; (*) Alternatively, antigen
retrieval may be performed with citrate
buffer pH 6.0**

Positive Controls:

WB : HeLa cells, HepG2 cells, SGC-7901 cells, Caco-2 cells

IHC : human spleen tissue,

IF : HepG2 cells,

Background Information

IFIT3 (IFN-induced protein with tetratricopeptide repeats 3), also known as IFIT-4, ISG-60 or RIG-G, is a 56 kDa IFN induced protein. IFIT3 has been identified to be associated with strong IFN antiviral activity. Upon RNA virus infection, IFIT3 is significantly induced, ectopic expression or knockdown of IFIT3 could, respectively, enhance or impair IFN regulatory factor 3 (IRF3)-mediated gene expression. IFIT3 thus may serve as an important modulator in innate immunity, revealing a new function of the IFIT family proteins.

Storage

Storage:

Store at -20°C.

Storage Buffer:

PBS with 0.02% sodium azide and 50% glycerol pH 7.3.

Aliquoting is unnecessary for -20°C storage

***** 20ul sizes contain 0.1% BSA**

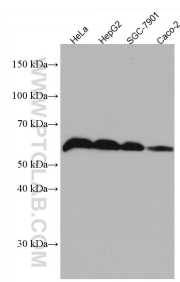
For technical support and original validation data for this product please contact:

T: 1 (888) 4PTGLAB (1-888-478-4522) (toll free
in USA), or 1(312) 455-8498 (outside USA)

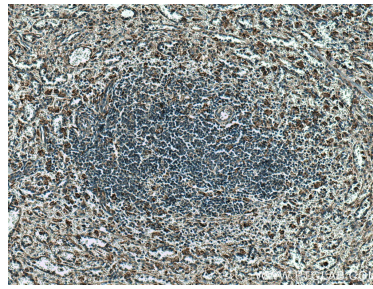
E: proteintech@ptglab.com
W: ptglab.com

**This product is exclusively available under Proteintech
Group brand and is not available to purchase from any
other manufacturer.**

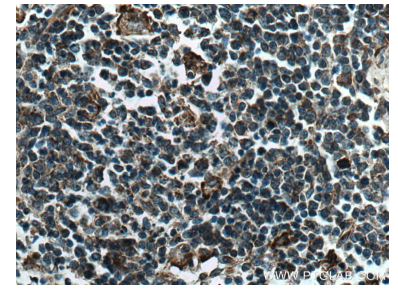
Selected Validation Data



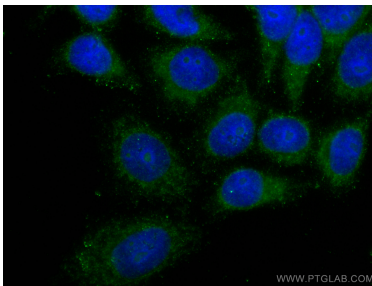
Various lysates were subjected to SDS PAGE followed by western blot with 67208-1-Ig (IFIT3 antibody) at dilution of 1:3000 incubated at room temperature for 1.5 hours.



Immunohistochemical analysis of paraffin-embedded human spleen tissue slide using 67208-1-Ig (IFIT3 antibody) at dilution of 1:300 (under 10x lens). Heat mediated antigen retrieval with Tris-EDTA buffer (pH 9.0).



Immunohistochemical analysis of paraffin-embedded human spleen tissue slide using 67208-1-Ig (IFIT3 antibody) at dilution of 1:300 (under 40x lens). Heat mediated antigen retrieval with Tris-EDTA buffer (pH 9.0).



Immunofluorescent analysis of (-20°C Ethanol) fixed HepG2 cells using IFIT3 antibody (67208-1-Ig, Clone: 2C8B10) at dilution of 1:400 and CoraLite®488-Conjugated AffiniPure Goat Anti-Mouse IgG(H+L).