

For Research Use Only

# CoraLite® Plus 488-conjugated ASGR1 Polyclonal antibody



Catalog Number: CL488-11739

1 Publications

## Basic Information

<b>Catalog Number:</b> CL488-11739	<b>GenBank Accession Number:</b> BC032130	<b>Purification Method:</b> Antigen affinity purification
<b>Size:</b> 100ul , Concentration: 1000 µg/ml by Nanodrop;	<b>GeneID (NCBI):</b> 432	<b>Recommended Dilutions:</b> IF 1:50-1:500
<b>Source:</b> Rabbit	<b>UNIPROT ID:</b> P07306	<b>Excitation/Emission maxima wavelengths:</b> 493 nm / 522 nm
<b>Isotype:</b> IgG	<b>Full Name:</b> asialoglycoprotein receptor 1	
<b>Immunogen Catalog Number:</b> AG2310	<b>Calculated MW:</b> 291 aa, 33 kDa	

## Applications

<b>Tested Applications:</b> FC, IF	<b>Positive Controls:</b> IF : rat liver tissue, human liver cancer tissue
<b>Cited Applications:</b> IF	
<b>Species Specificity:</b> human, mouse, rat	
<b>Cited Species:</b> mouse	

## Background Information

Asialoglycoprotein receptor (ASGPR), also known as the hepatic galactose/N-acetylglucosamine (GlcNAc) receptor or Ashwell receptor, is a C-type lectin expressed exclusively in hepatic parenchymal cells. ASGPR consists of two subunits, a major subunit (ASGR1, HL-1) and a minor subunit (ASGR2, HL-2), and specifically recognizes terminal  $\beta$ -linked galactose or GlcNAc on circulating glycoproteins or cells. This receptor plays a critical role in serum glycoprotein homeostasis by mediating the endocytosis and lysosomal degradation of glycoproteins that contain terminal galactose or GlcNAc residues. ASGPR may facilitate hepatic infection by multiple viruses including hepatitis B, and is also a target for liver-specific drug delivery. This antibody is conjugated with CL488, Ex/Em 488 nm/515 nm.

## Notable Publications

Author	Pubmed ID	Journal	Application
Tian Tian	37829506	MedComm (2020)	IF

## Storage

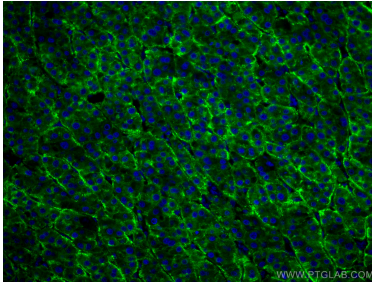
**Storage:**  
Store at -20°C. Avoid exposure to light. Stable for one year after shipment.  
**Storage Buffer:**  
PBS with 50% Glycerol, 0.05% Proclin300, 0.5% BSA, pH 7.3.  
Aliquoting is unnecessary for -20°C storage

\*\*\* 20ul sizes contain 0.1% BSA

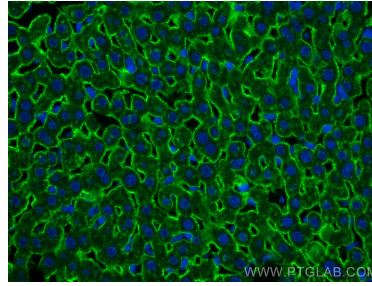
For technical support and original validation data for this product please contact:  
T: 1 (888) 4PTGLAB (1-888-478-4522) (toll free in USA), or 1(312) 455-8498 (outside USA)  
E: proteintech@ptglab.com  
W: ptglab.com

This product is exclusively available under Proteintech Group brand and is not available to purchase from any other manufacturer.

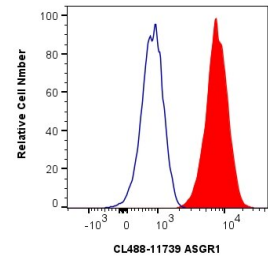
## Selected Validation Data



Immunofluorescent analysis of (4% PFA) fixed human liver cancer tissue using CoraLite® Plus 488 ASGR1 antibody (CL488-11739) at dilution of 1:200.



Immunofluorescent analysis of (4% PFA) fixed rat liver tissue using CoraLite® Plus 488 ASGR1 antibody (CL488-11739) at dilution of 1:200.



$1 \times 10^6$  HepG2 cells were intracellularly stained with 0.8 ug CoraLite® Plus 488 Anti-Human ASGR1 (CL488-11739) and CoraLite®488-Conjugated AffiniPure Goat Anti-Rabbit IgG(H+L) at dilution 1:1000 (red), or 0.8 ug CoraLite® Plus 488-conjugated Rabbit IgG control Rabbit PolyAb (CL488-30000, Clone: ) (blue). Cells were not fixed.