

For Research Use Only

CoraLite®488-conjugated IFIH1 Polyclonal antibody



Catalog Number:CL488-21775

Basic Information

Catalog Number: CL488-21775	GenBank Accession Number: BC111750	Purification Method: Antigen affinity purification
Size: 100ul , Concentration: 1000 µg/ml by Nanodrop;	GeneID (NCBI): 64135	Recommended Dilutions: IF 1:50-1:500
Source: Rabbit	Full Name: interferon induced with helicase C domain 1	Excitation/Emission maxima wavelengths: 491 nm / 516 nm
Isotype: IgG	Calculated MW: 1025 aa, 117 kDa	
Immunogen Catalog Number: AG16467	Observed MW: 117-125 kDa	

Applications

Tested Applications: IF	Positive Controls: IF : mouse skeletal muscle tissue,
Species Specificity: human, mouse	

Background Information

IFIH1 (Interferon-induced helicase C domain-containing protein 1) is a putative RNA helicase that is upregulated in response to treatment with IFNB or IFNB and MEZ. It is also named as MDA5 and RH116. Ectopic expression of MDA5 in melanoma cells resulted in reduced colony formation, suggesting an interaction of the CARD and apoptotic signal molecules. Functional analysis indicated that MDA5 is an RNA-dependent ATPase. And this antibody is CL488(Ex/Em 488 nm/515 nm) conjugated.

Storage

Storage:
Store at -20°C. Avoid exposure to light.
Storage Buffer:
PBS with 50% Glycerol, 0.05% Proclin300, 0.5% BSA, pH 7.3.
Aliquoting is unnecessary for -20°C storage

*** 20ul sizes contain 0.1% BSA

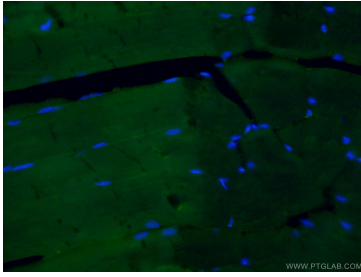
For technical support and original validation data for this product please contact:

T: 1 (888) 4PTGLAB (1-888-478-4522) (toll free
in USA), or 1(312) 455-8498 (outside USA)

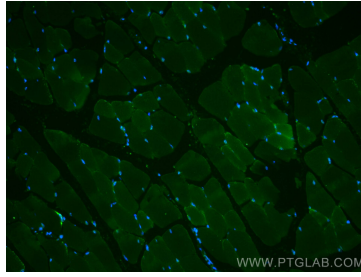
E: proteintech@ptglab.com
W: ptglab.com

This product is exclusively available under Proteintech Group brand and is not available to purchase from any other manufacturer.

Selected Validation Data



Immunofluorescent analysis of (4% PFA) fixed mouse skeletal muscle tissue using CL488-21775 (IFIH1 antibody) at dilution of 1:100.



Immunofluorescent analysis of (4% PFA) fixed mouse skeletal muscle tissue using CoraLite@488 IFIH1 antibody (CL488-21775) at dilution of 1:200.