

For Research Use Only

CoraLite® Plus 488-conjugated Ch-TOG Monoclonal antibody



Catalog Number: **CL488-67631** **1 Publications**

Basic Information

Catalog Number: CL488-67631	GenBank Accession Number: BC120869	Purification Method: Protein G purification
Size: 100ul , Concentration: 1000 µg/ml by Nanodrop;	GeneID (NCBI): 9793	CloneNo.: 1H5G1
Source: Mouse	Full Name: cytoskeleton associated protein 5	Recommended Dilutions: IF 1:50-1:500
Isotype: IgG1	Observed MW: 220-240 kDa	Excitation/Emission maxima wavelengths: 488 nm / 515 nm
Immunogen Catalog Number: AG28770		

Applications

Tested Applications: IF	Positive Controls: IF : HepG2 cells,
Cited Applications: IF	
Species Specificity: Human, mouse, rat, pig	

Background Information

Ch-TOG (colonic hepatic tumor-overexpressed gene), also known as XMAP215 or CKAP5, is a microtubule polymerase which can promotes cytoplasmic microtubule nucleation and elongation. Through interacting with Aurora-A and TACC3, it plays a major role in organizing spindle poles.

Notable Publications

Author	Pubmed ID	Journal	Application
Tianyu Wu	36395215	Science	IF

Storage

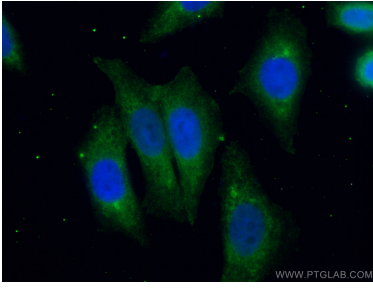
Storage:
Store at -20°C. Avoid exposure to light.
Storage Buffer:
PBS with 50% Glycerol, 0.05% Proclin300, 0.5% BSA, pH 7.3.
Aliquoting is unnecessary for -20°C storage

*** 20ul sizes contain 0.1% BSA

For technical support and original validation data for this product please contact:
T: 1 (888) 4PTGLAB (1-888-478-4522) (toll free in USA), or 1(312) 455-8498 (outside USA)
E: proteintech@ptglab.com
W: ptglab.com

This product is exclusively available under Proteintech Group brand and is not available to purchase from any other manufacturer.

Selected Validation Data



Immunofluorescent analysis of (4% PFA) fixed HepG2 cells using CoraLite® Plus 488-conjugated Ch-TOG antibody (CL488-67631, Clone: 1H5G1) at dilution of 1:100.