

For Research Use Only

CoraLite®594-conjugated KIF20A Monoclonal antibody



Catalog Number: CL594-67190

1 Publications

Basic Information

Catalog Number: CL594-67190	GenBank Accession Number: BC012999	Purification Method: Protein G purification
Size: 100ul , Concentration: 1000 µg/ml by Nanodrop;	GeneID (NCBI): 10112	CloneNo.: 2A8E3
Source: Mouse	Full Name: kinesin family member 20A	Recommended Dilutions: IF 1:50-1:500
Isotype: IgG1	Calculated MW: 890 aa, 100 kDa	Excitation/Emission maxima wavelengths: 593 nm / 614 nm
Immunogen Catalog Number: AG8916	Observed MW: 100 kDa	

Applications

Tested Applications: IF	Positive Controls: IF : HeLa cells,
Cited Applications: IF	
Species Specificity: Human, Rat, Mouse	

Background Information

KIF20A, also known as RAB6KIFL or MKlp2, is a kinesin originally identified as a binding partner for the rab6 GTPase involved in protein transport at the Golgi apparatus. KIF20A belongs to a large family of motor proteins that accumulate in mitotic cells and is required for normal cell division. KIF20A is thought to be involved in carcinogenesis. In normal tissues KIF20A is almost undetectable while it is overexpressed in various cancers. KIF20A has been identified as a novel promising candidate for anticancer immunotherapy.

Notable Publications

Author	Pubmed ID	Journal	Application
Tianyu Wu	36395215	Science	IF

Storage

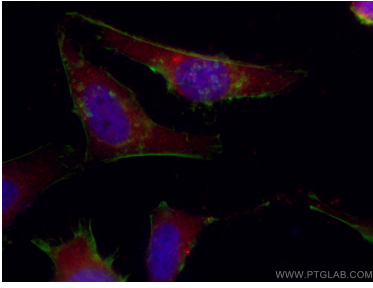
Storage:
Store at -20°C. Avoid exposure to light.
Storage Buffer:
PBS with 50% Glycerol, 0.05% Proclin300, 0.5% BSA, pH 7.3.
Aliquoting is unnecessary for -20°C storage

*** 20ul sizes contain 0.1% BSA

For technical support and original validation data for this product please contact:
T: 1 (888) 4PTGLAB (1-888-478-4522) (toll free in USA), or 1(312) 455-8498 (outside USA)
E: proteintech@ptglab.com
W: ptglab.com

This product is exclusively available under Proteintech Group brand and is not available to purchase from any other manufacturer.

Selected Validation Data



Immunofluorescent analysis of (4% PFA) fixed HeLa cells using CoraLite@594-conjugated KIF20A antibody (CL594-67190, Clone: 2A8E3) at dilution of 1:200, CL488-Phalloidin (green).