

HumanKine® IL-17 (IL-17A) (Recombinant Human)



Animal Component-Free	Human cell expressed	Tag-Free	Endotoxin Free
-----------------------	----------------------	----------	----------------

Product Description

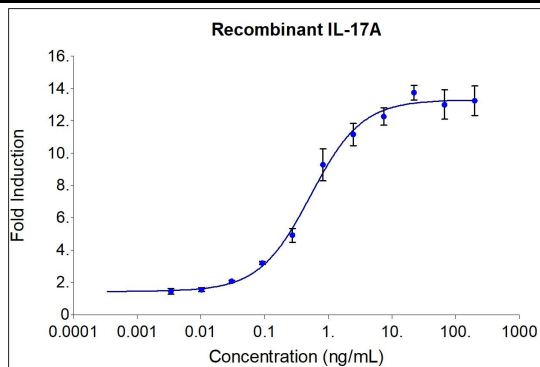
Animal-free IL-17 (IL-17A) is expressed in human 293 cells as a homodimeric glycoprotein with an apparent molecular mass of 30 to 35 kDa. The IL-17 family is comprised of at least 6 proinflammatory cytokines that share a conserved cystine-knot structure but diverge at the N-terminus. IL-17 family members are glycoproteins secreted as dimers that induce local cytokine production and recruit granulocytes to sites of inflammation.

Alternative Names	CTLA 8, CTLA8, IL 17, IL 17A, IL17, IL-17, IL17A, IL-17A, interleukin 17A
Source	Human Embryonic Kidney cells (HEK293). HEK293-derived IL-17 (IL-17A) protein
Species Reactivity	human,mouse

Specifications

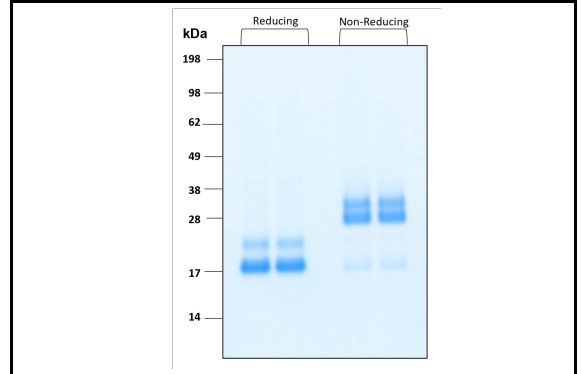
Test	Method	Specification
Activity	Dose-dependent induction of alkaline phosphatase production in a HEK293 reporter cell line.	0.24-1.2 ng/mL EC50
Molecular Mass	SDS-PAGE	18 and 23 kDa reduced, 29 to 34 kDa non-reduced, homodimer, glycosylated
Purity	SDS-PAGE	>95%
Endotoxin	LAL	<1 EU/μg

Activity Data



Recombinant human IL-17A (HZ-1113) stimulates dose-dependent induction of alkaline phosphatase production in a HEK293 reporter cell line. Alkaline phosphatase production was assessed using pNPP as a chromogenic substrate. The EC50 was determined using a 4-parameter non-linear regression model. The EC50 value range is 0.24-1.2 ng/mL.

SDS-PAGE



Preparation	
Shipping Temperature	ambient temperature
Formulation	10 mM Tris-HCl pH 7.4+ 250 mM NaCl, See Certificate of Analysis for details
Reconstitution	Briefly centrifuge the vial before opening. It is recommended to reconstitute the protein in sterile 1xPBS pH 7.4 containing 0.1% endotoxin-free recombinant human serum albumin (HSA).

Stability and Storage	Product Form	Temperature Conditions	Storage Time (From Date of Receipt)
	Lyophilized	-20°C to -80°C	Until Expiry Date
	Lyophilized	Room Temperature	2 weeks
	Reconstituted as per CofA	-20°C to -80°C	6 months
	Reconstituted as per CofA	4°C	1 week
Avoid repeated freeze-thaw cycles.			

www.ptglab.com

Document #: FR-QA118-101 Rev 0
Data Sheet Version #: 1

Proteintech Group, Inc.
5500 Pearl Street, Suite 400 Rosemont, IL 60612
t: 1-888-478-4522; f: 1-312-455-8408
Email: proteintech@ptglab.com