

**HumanKine<sup>®</sup> Cystatin C (Recombinant Human)**



Animal Component-Free	Human cell expressed	Tag-Free	Endotoxin Free
-----------------------	----------------------	----------	----------------

**Product Description**

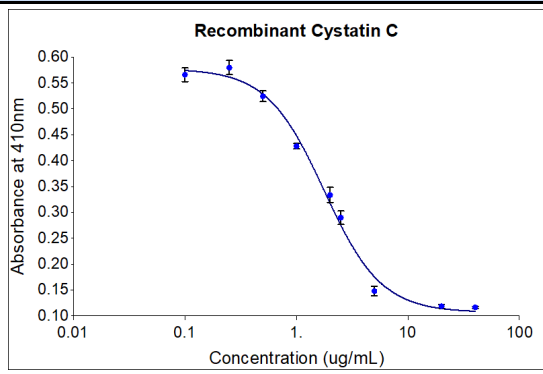
Animal-free Recombinant Human Cystatin C (Cys-C) is expressed in human 293 cells as a monomer with an apparent molecular mass of 12 to 13 kDa. Native Cys-C in human urine is found in two different forms: one with pI 9.2 and the other with pI 7.8 by elimination of small basic peptides or amino acids from the N-terminal end of protein. Cystatin C has been studied for its role in predicting newonset or deteriorating cardiovascular disease. This cytokine is produced in a serum-free, chemically defined media.

Alternative Names	ARMD11, CST3, Cystatin 3, cystatin C, Gamma trace, Post gamma globulin
Source	Human Embryonic Kidney cells (HEK293). HEK293-derived Cystatin C protein
Species Reactivity	human

**Specifications**

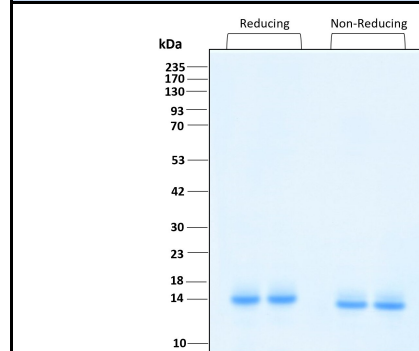
Test	Method	Specification
Activity	Dose-dependent inhibition of Papain protease activity by colorimetric assay using L-BAPA as the substrate.	0.5-2.6 µg/mL EC50
Molecular Mass	SDS-PAGE	15 to 18 kDa reduced, 14 to 17 kDa non-reduced, monomer, non-glycosylated
Purity	SDS-PAGE	>95%
Endotoxin	LAL	<1 EU/µg

**Activity Data**



Recombinant Human Cystatin C (HZ-1211) inhibits papain protease activity in a dose-dependent manner. Papain protease activity was measured by colorimetric assay using L-BAPA as the substrate. The EC50 was determined using a 4-parameter non-linear regression model. The EC50 values range from 0.5-2.6 µg/mL.

**SDS-PAGE**



Preparation	
Shipping Temperature	ambient temperature
Formulation	1x PBS, See Certificate of Analysis for details
Reconstitution	Briefly centrifuge the vial before opening. It is recommended to reconstitute the protein in sterile 1x PBS pH 7.4.

Stability and Storage	Product Form	Temperature Conditions	Storage Time (From Date of Receipt)
	Lyophilized	-20°C to -80°C	Until Expiry Date
	Lyophilized	Room Temperature	2 weeks
	Reconstituted as per CofA	-20°C to -80°C	6 months
	Reconstituted as per CofA	4°C	1 week
Avoid repeated freeze-thaw cycles.			

[www.ptglab.com](http://www.ptglab.com)

Document #: FR-QA118-101 Rev 0  
Data Sheet Version #: 1

**Proteintech Group, Inc.**  
5500 Pearl Street, Suite 400 Rosemont, IL 60612  
t: 1-888-478-4522; f: 1-312-455-8408  
Email: [proteintech@ptglab.com](mailto:proteintech@ptglab.com)