

**HumanKine<sup>®</sup> MCP-1 (Recombinant Human)**



Animal Component-Free	Human cell expressed	Tag-Free	Endotoxin Free
-----------------------	----------------------	----------	----------------

**Product Description**

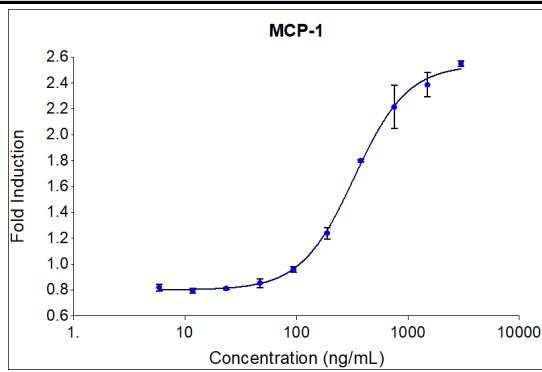
N/A

Alternative Names	MCP-1, C-C motif chemokine ligand 2, Monocyte Secretory Protein JE, CCL2, GDCF-2, HC11, HSMCR30, MCAF, SCYA2, SMC-CF
Source	Human Embryonic Kidney cells (HEK293). HEK293-derived MCP-1 protein
Species Reactivity	human

**Specifications**

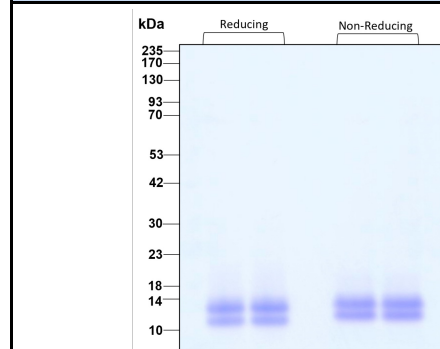
Test	Method	Specification
Activity	Dose-dependent stimulation of the proliferation of the THP-1 monocyte cell line.	150-750 ng/mL EC50
Molecular Mass	SDS-PAGE	12-14 kDa reduced and non-reduced, monomer, glycosylated
Purity	SDS-PAGE	>95%
Endotoxin	LAL	<1 EU/μg

**Activity Data**



Recombinant human MCP-1 (HZ-1334) stimulates dose-dependent proliferation of THP-1 human monocyte cell line. Cell number was quantitatively assessed by PrestoBlue<sup>®</sup> Cell Viability Reagent. THP-1 cells were treated with increasing concentrations of recombinant MCP-1 for 144 hours. The EC50 was determined using a 4-parameter non-linear regression model. The EC50

**SDS-PAGE**



Preparation	
Shipping Temperature	ambient temperature
Formulation	1x PBS pH 7.4, See Certificate of Analysis for details
Reconstitution	Briefly centrifuge the vial before opening. It is recommended to reconstitute the protein in sterile 1x PBS pH 7.4 containing 0.1% endotoxin-free recombinant human serum albumin (HSA).

Stability and Storage	Product Form	Temperature Conditions	Storage Time (From Date of Receipt)
	Lyophilized	-20°C to -80°C	Until Expiry Date
	Lyophilized	Room Temperature	2 weeks
	Reconstituted as per CofA	-20°C to -80°C	6 months
	Reconstituted as per CofA	4°C	1 week
Avoid repeated freeze-thaw cycles.			

[www.ptglab.com](http://www.ptglab.com)

Document #: FR-QA118-101 Rev 0  
Data Sheet Version #:

**Proteintech Group, Inc.**  
5500 Pearl Street, Suite 400 Rosemont, IL 60612  
t: 1-888-478-4522; f: 1-312-455-8408  
Email: [proteintech@ptglab.com](mailto:proteintech@ptglab.com)