

# IHC*easy* Claudin 18 Ready-To-Use IHC Kit

Catalog Number: **KHC0063**

## General Information

**Sample type:**  
FFPE tissue

**Cited sample type:**

**Reactivity:**  
Human

**Cited Reactivity:**

**Assay type:**  
Immunohistochemistry

**Primary antibody type:**  
Mouse Monoclonal

**Secondary antibody type:**  
Polymer-HRP-Goat anti-Mouse

## Kit Component

Component	Size	Concentration
Antigen Retrieval Buffer	100 mL	50×
Washing Buffer	100 mL ×2	20×
Blocking Buffer	5 mL	RTU
Primary Antibody	5 mL	RTU
Secondary Antibody	5 mL	RTU
Chromogen Component A	0.2 mL	RTU
Chromogen Component B	4 mL	RTU
Signal Enhancer	5 mL	RTU
Counter Staining Reagent	5 mL	RTU
Mounting Media	5 mL	RTU
Control Slide	1 slide (Optional)	FFPE
Datasheet	1 Copy	
Manual	1 Copy	

## Storage Instructions

All the reagents are stored at 2-8°C. The kit is stable for 6 months from the date of receipt.

## Background

Claudin 18 (CLDN18) belongs to the large claudin family of proteins, which are tetraspan transmembrane proteins of tight junctions. Claudins exhibit specific patterns of expression in different tissues. CLDN18 is specifically expressed in the stomach and lung. Altered CLDN18 expression has been reported in various human malignancies, including gastric cancer, lung adenocarcinoma, and pancreatic neoplasm. CLDN18 has two alternatively spliced variants, CLDN18.1 and CLDN18.2. CLDN18.2 is a highly selective gastric lineage marker that determines the gastric phenotype in a neoplastic condition, whereas CLDN18.1 is lung specific. Primary antibody in this kit was raised against a domain that shared by both CLDN18.1 and CLDN18.2 a C-terminal, thus, this kit could detect both isoforms of Claudin 18.

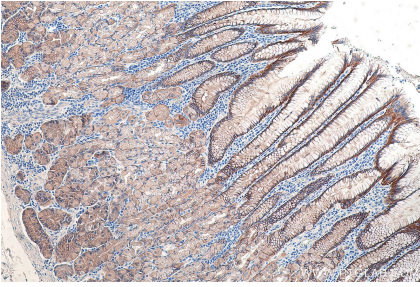
## Synonyms

claudin 18, CLDN18, SFTA5, SFTPJ

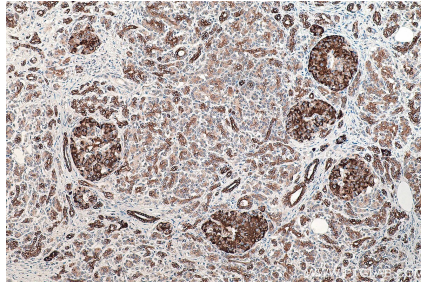
For technical support and original validation data for this product please contact:  
T: 1 (888) 4PTGLAB (1-888-478-4522) (toll free in USA), or 1(312) 455-8498 (outside USA)  
E: [proteintech@ptglab.com](mailto:proteintech@ptglab.com)  
W: [ptglab.com](http://ptglab.com)

This product is exclusively available under Proteintech Group brand and is not available to purchase from any other manufacturer.

## Selected Validation Data



Immunohistochemical analysis of paraffin-embedded human stomach tissue slide using KHC0063 (Claudin 18 IHC Kit).



Immunohistochemical analysis of paraffin-embedded human pancreas cancer tissue slide using KHC0063 (Claudin 18 IHC Kit).