

IHC*easy* RHAG Ready-To-Use IHC Kit

Catalog Number: **KHC0075**

General Information

Sample type:
FFPE tissue
Cited sample type:
Reactivity:
Human
Cited Reactivity:

Assay type:
Immunohistochemistry
Primary antibody type:
Mouse Monoclonal
Secondary antibody type:
Polymer-HRP-Goat anti-Mouse

Kit Component

Component	Size	Concentration
Antigen Retrieval Buffer	100 mL	50×
Washing Buffer	100 mL ×2	20×
Blocking Buffer	5 mL	RTU
Primary Antibody	5 mL	RTU
Secondary Antibody	5 mL	RTU
Chromogen Component A	0.2 mL	RTU
Chromogen Component B	4 mL	RTU
Signal Enhancer	5 mL	RTU
Counter Staining Reagent	5 mL	RTU
Mounting Media	5 mL	RTU
Control Slide	1 slide (Optional)	FFPE
Datasheet	1 Copy	
Manual	1 Copy	

Storage Instructions

All the reagents are stored at 2-8°C. The kit is stable for 6 months from the date of receipt.

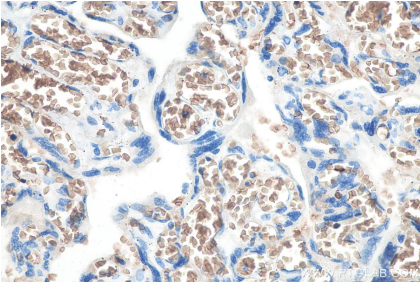
Background

The Rh blood group proteins are well known as the erythrocyte targets of the potent antibody response that causes hemolytic disease of the newborn. Rh-associated glycoprotein (RHAG) can mediate ammonium uptake.

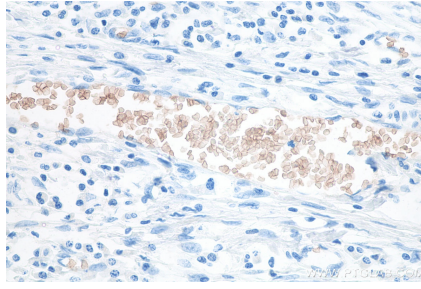
Synonyms

Ammonium transporter Rh type A, CD241, Rh associated glycoprotein, Rh family type A glycoprotein, Rh type A glycoprotein, RH2, Rh50, RH50A, Rh50GP, RHAG, SLC42A1

Selected Validation Data



Immunohistochemical analysis of paraffin-embedded human placenta tissue slide using KHC0075 (RHAG IHC Kit).



Immunohistochemical analysis of paraffin-embedded human colon cancer tissue slide using KHC0075 (RHAG IHC Kit).