

# IHC*easy* ACTC1-specific Ready-To-Use IHC Kit

Catalog Number: **KHC0101**

## General Information

**Sample type:**  
FFPE tissue

**Cited sample type:**

**Reactivity:**  
Human, Mouse, Rat

**Cited Reactivity:**

**Assay type:**  
Immunohistochemistry

**Primary antibody type:**  
Mouse Monoclonal

**Secondary antibody type:**  
Polymer-HRP-Goat anti-Mouse

## Kit Component

Component	Size	Concentration
Antigen Retrieval Buffer	100 mL	50×
Washing Buffer	100 mL ×2	20×
Blocking Buffer	5 mL	RTU
Primary Antibody	5 mL	RTU
Secondary Antibody	5 mL	RTU
Chromogen Component A	0.2 mL	RTU
Chromogen Component B	4 mL	RTU
Signal Enhancer	5 mL	RTU
Counter Staining Reagent	5 mL	RTU
Mounting Media	5 mL	RTU
Control Slide	1 slide (Optional)	FFPE
Datasheet	1 Copy	
Manual	1 Copy	

## Storage Instructions

All the reagents are stored at 2-8°C. The kit is stable for 6 months from the date of receipt.

## Background

Actins are highly conserved proteins that are involved in various types of cell motility and are ubiquitously expressed in all eukaryotic cells. ACTC1 gene encodes cardiac muscle alpha-actin, the predominant actin in adult heart, which interacts with a variety of proteins to produce the force for muscle contraction. This kit is specific to ACTC1 and does not cross-react with other actins.

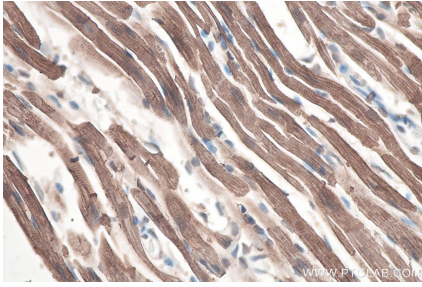
## Synonyms

ACTC, ACTC1, ACTC1 cardiac muscle 1, ACTC1 specific, ACTC1-specific, Actin cardiac muscle specific, Actin, alpha cardiac muscle 1, actin, alpha, cardiac muscle 1, Alpha cardiac actin, CMD1R, CMH11

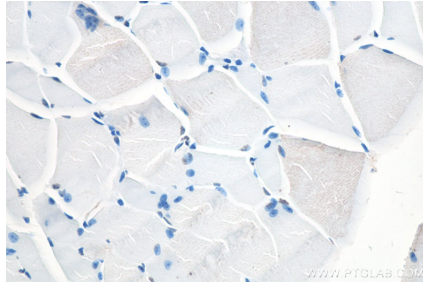
For technical support and original validation data for this product please contact:  
T: 1 (888) 4PTGLAB (1-888-478-4522) (toll free in USA), or 1(312) 455-8498 (outside USA)  
E: [proteintech@ptglab.com](mailto:proteintech@ptglab.com)  
W: [ptglab.com](http://ptglab.com)

This product is exclusively available under Proteintech Group brand and is not available to purchase from any other manufacturer.

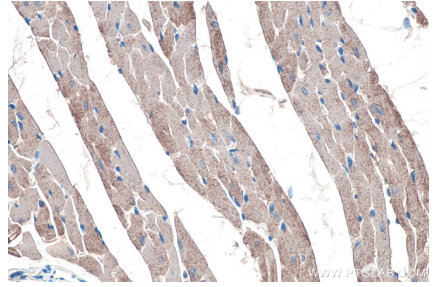
## Selected Validation Data



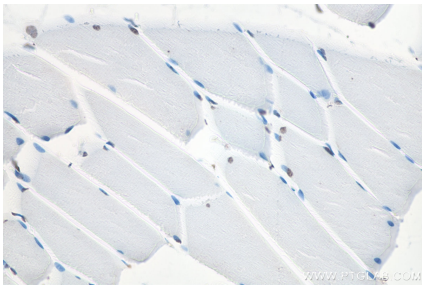
Immunohistochemical analysis of paraffin-embedded mouse heart tissue slide using KHCO101 (ACTC1-specific IHC Kit).



Immunohistochemical analysis of paraffin-embedded mouse skeletal muscle tissue slide using KHCO101 (ACTC1-specific IHC Kit). Note that ACTC1 is not expressed in skeletal muscle.



Immunohistochemical analysis of paraffin-embedded rat heart tissue slide using KHCO101 (ACTC1-specific IHC Kit).



Immunohistochemical analysis of paraffin-embedded rat skeletal muscle tissue slide using KHCO101 (ACTC1-specific IHC Kit). Note that ACTC1 is not expressed in skeletal muscle.