

# IHCeasy m6A Ready-To-Use IHC Kit

Catalog Number: **KHC0143**

## General Information

**Sample type:**  
FFPE tissue

**Cited sample type:**

**Reactivity:**  
Human, Mouse, Rat, N6-methyladenosine

**Cited Reactivity:**

**Assay type:**  
Immunohistochemistry

**Primary antibody type:**  
Mouse Monoclonal

**Secondary antibody type:**  
Polymer-HRP-Goat anti-Mouse

## Kit Component

Component	Size	Concentration
Antigen Retrieval Buffer	100 mL	50×
Washing Buffer	100 mL ×2	20×
Blocking Buffer	5 mL	RTU
Primary Antibody	5 mL	RTU
Secondary Antibody	5 mL	RTU
Chromogen Component A	0.2 mL	RTU
Chromogen Component B	4 mL	RTU
Signal Enhancer	5 mL	RTU
Counter Staining Reagent	5 mL	RTU
Mounting Media	5 mL	RTU
Control Slide	1 slide (Optional)	FFPE
Datasheet	1 Copy	
Manual	1 Copy	

## Storage Instructions

All the reagents are stored at 2-8°C. The kit is stable for 6 months from the date of receipt.

## Background

m6A (N6-methyladenosine) is the most abundant internal modification in mammalian mRNA. This modification is installed by the m6A methyltransferases or termed "writers" such as METTL3 and METTL14, and can be reversed by demethylases that serve as "erasers" such as FTO and ALKBH5. The stability of m6A-modified mRNA is regulated by m6A reader protein YTHDFs, which recognizes m6A and reduces the stability of target transcripts. m6A modification and its regulatory proteins play critical roles in cancer pathogenesis and progression. m6A modification is also involved in viruses life cycles, suggesting that drugs targets to m6A pathway could be used for antiviral therapy.

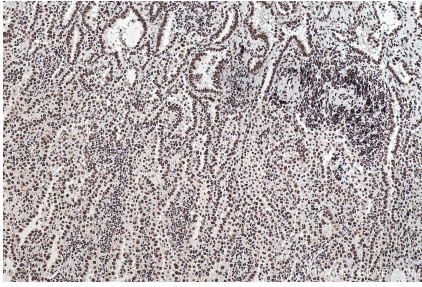
## Synonyms

6-N-Methyladenoside, m6A, N6-methyladenosine

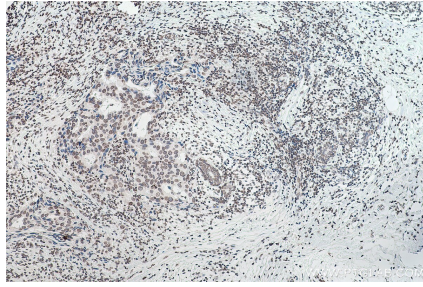
For technical support and original validation data for this product please contact:  
T: 1 (888) 4PTGLAB (1-888-478-4522) (toll free in USA), or 1(312) 455-8498 (outside USA)  
E: [proteintech@ptglab.com](mailto:proteintech@ptglab.com)  
W: [ptglab.com](http://ptglab.com)

This product is exclusively available under Proteintech Group brand and is not available to purchase from any other manufacturer.

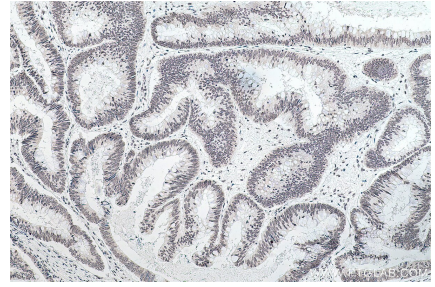
## Selected Validation Data



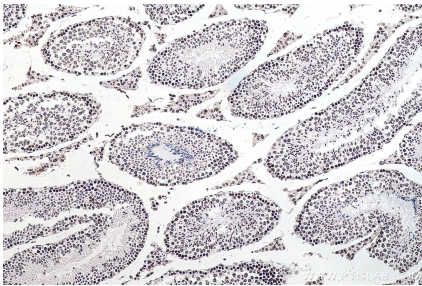
Immunohistochemical analysis of paraffin-embedded human lung cancer tissue slide using KHC0143 (m6A IHC Kit).



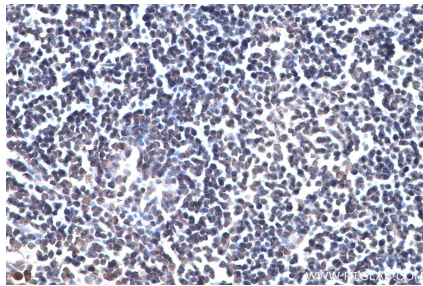
Immunohistochemical analysis of paraffin-embedded human breast cancer tissue slide using KHC0143 (m6A IHC Kit).



Immunohistochemical analysis of paraffin-embedded human colon cancer tissue slide using KHC0143 (m6A IHC Kit).



Immunohistochemical analysis of paraffin-embedded mouse testis tissue slide using KHC0143 (m6A IHC Kit).



Immunohistochemical analysis of paraffin-embedded rat lymph node slide using KHC0143 (m6A IHC kit).