

IHC*easy* CBLL1 Ready-To-Use IHC Kit

Catalog Number: **KHC0152**

General Information

Sample type:
FFPE tissue

Cited sample type:

Reactivity:
Human, Mouse, Rat

Cited Reactivity:

Assay type:
Immunohistochemistry

Primary antibody type:
Rabbit Polyclonal

Secondary antibody type:
Polymer-HRP-Goat anti-Rabbit

Kit Component

Component	Size	Concentration
Antigen Retrieval Buffer	100 mL	50×
Washing Buffer	100 mL ×2	20×
Blocking Buffer	5 mL	RTU
Primary Antibody	5 mL	RTU
Secondary Antibody	5 mL	RTU
Chromogen Component A	0.2 mL	RTU
Chromogen Component B	4 mL	RTU
Signal Enhancer	5 mL	RTU
Counter Staining Reagent	5 mL	RTU
Mounting Media	5 mL	RTU
Control Slide	1 slide (Optional)	FFPE
Datasheet	1 Copy	
Manual	1 Copy	

Storage Instructions

All the reagents are stored at 2-8°C. The kit is stable for 6 months from the date of receipt.

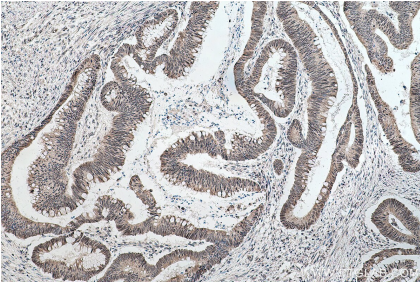
Background

Cbl proto-oncogene E3 ubiquitin protein ligase-like 1, RNF188, Hakai (CBLL1) is an evolutionarily conserved E3 ubiquitin ligase containing a RING-finger domain. CBLL1 contains a typical RING-finger, short pTyr-binding domain, and proline-rich domain. CBLL1 expression is upregulated in human colon and gastric cancer tissues, and CBLL1 has been reported to induce anchorage-dependent cell growth. CBLL1 immunostaining was observed in both the nuclei and cytoplasm of cancer cells.

Synonyms

c Cbl like protein 1, CBLL1, FLJ23109, HAKAI, RING finger protein 188, RNF188

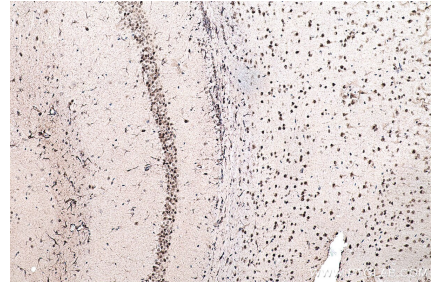
Selected Validation Data



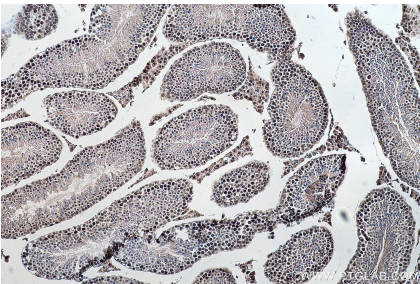
Immunohistochemical analysis of paraffin-embedded human colon cancer tissue slide using KHC0152 (CBLL1 IHC Kit).



Immunohistochemical analysis of paraffin-embedded human tonsillitis tissue slide using KHC0152 (CBLL1 IHC Kit).



Immunohistochemical analysis of paraffin-embedded mouse brain tissue slide using KHC0152 (CBLL1 IHC Kit).



Immunohistochemical analysis of paraffin-embedded mouse testis tissue slide using KHC0152 (CBLL1 IHC Kit).