

IHC*easy* FTO Ready-To-Use IHC Kit

Catalog Number: **KHC0153**

General Information

Sample type:
FFPE tissue

Cited sample type:

Reactivity:
Human, Mouse

Cited Reactivity:

Assay type:
Immunohistochemistry

Primary antibody type:
Rabbit Polyclonal

Secondary antibody type:
Polymer-HRP-Goat anti-Rabbit

Kit Component

Component	Size	Concentration
Antigen Retrieval Buffer	100 mL	50×
Washing Buffer	100 mL ×2	20×
Blocking Buffer	5 mL	RTU
Primary Antibody	5 mL	RTU
Secondary Antibody	5 mL	RTU
Chromogen Component A	0.2 mL	RTU
Chromogen Component B	4 mL	RTU
Signal Enhancer	5 mL	RTU
Counter Staining Reagent	5 mL	RTU
Mounting Media	5 mL	RTU
Control Slide	1 slide (Optional)	FFPE
Datasheet	1 Copy	
Manual	1 Copy	

Storage Instructions

All the reagents are stored at 2-8°C. The kit is stable for 6 months from the date of receipt.

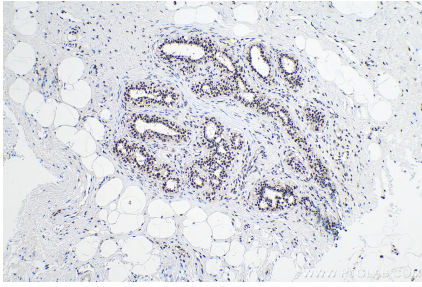
Background

Fat mass and obesity-associated protein (FTO) has efficient oxidative demethylation activity targeting the abundant N⁶-methyladenosine (m⁶A) residues in RNA in vitro. Variants in the FTO (fat mass and obesity associated) gene are associated with increased body mass index in humans.

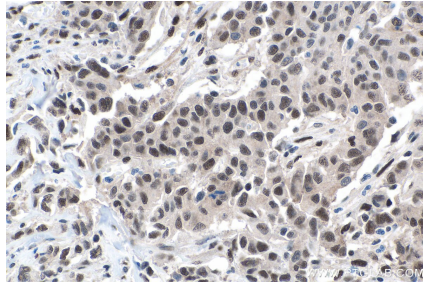
Synonyms

Alpha ketoglutarate dependent dioxygenase FTO, FTO, KIAA1752

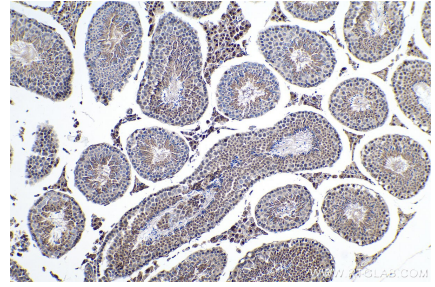
Selected Validation Data



Immunohistochemical analysis of paraffin-embedded human breast cancer tissue slide using KHCO153 (FTO IHC Kit).



Immunohistochemical analysis of paraffin-embedded human stomach cancer tissue slide using KHCO153 (FTO IHC Kit).



Immunohistochemical analysis of paraffin-embedded mouse testis tissue slide using KHCO153 (FTO IHC Kit).