

IHC*easy* EIF3I Ready-To-Use IHC Kit

Catalog Number: **KHC0171**

General Information

Sample type:
FFPE tissue

Cited sample type:

Reactivity:
Human, Mouse, Rat

Cited Reactivity:

Assay type:
Immunohistochemistry

Primary antibody type:
Rabbit Polyclonal

Secondary antibody type:
Polymer-HRP-Goat anti-Rabbit

Kit Component

Component	Size	Concentration
Antigen Retrieval Buffer	100 mL	50×
Washing Buffer	100 mL ×2	20×
Blocking Buffer	5 mL	RTU
Primary Antibody	5 mL	RTU
Secondary Antibody	5 mL	RTU
Chromogen Component A	0.2 mL	RTU
Chromogen Component B	4 mL	RTU
Signal Enhancer	5 mL	RTU
Counter Staining Reagent	5 mL	RTU
Mounting Media	5 mL	RTU
Control Slide	1 slide (Optional)	FFPE
Datasheet	1 Copy	
Manual	1 Copy	

Storage Instructions

All the reagents are stored at 2-8°C. The kit is stable for 6 months from the date of receipt.

Background

Eukaryotic initiation factor (EIF3) complex is the largest of the eIFs and consists of more than 10 nonidentical subunit, and is required for several steps in the initiation of protein synthesis. It associates with the 40S ribosome and facilitates the recruitment of eIF-1, eIF-1A, eIF-2:GTP:methionyl-tRNA_i and eIF-5 to form the 43S preinitiation complex (43S PIC). Also it can stimulate mRNA recruitment to the 43S PIC and scanning of the mRNA for AUG recognition. The eIF-3 complex is also required for disassembly and recycling of posttermination ribosomal complexes and subsequently prevents premature joining of the 40S and 60S ribosomal subunits prior to initiation. EIF3I is one subunit of EIF3 complex.

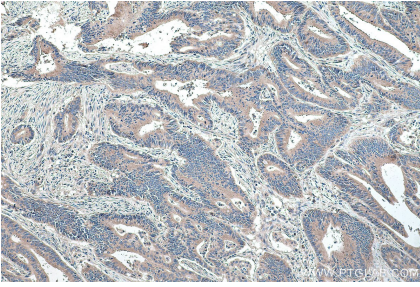
Synonyms

eIF 3 beta, eIF3 beta, eIF3 p36, EIF3I, EIF3S2, PRO2242, TRIP 1, TRIP1

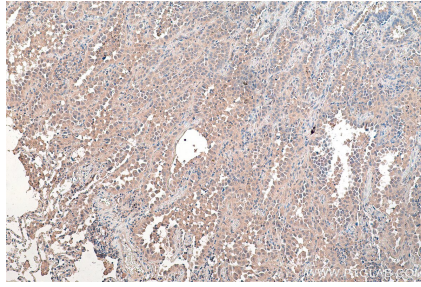
For technical support and original validation data for this product please contact:
T: 1 (888) 4PTGLAB (1-888-478-4522) (toll free in USA), or 1(312) 455-8498 (outside USA)
E: proteintech@ptglab.com
W: ptglab.com

This product is exclusively available under Proteintech Group brand and is not available to purchase from any other manufacturer.

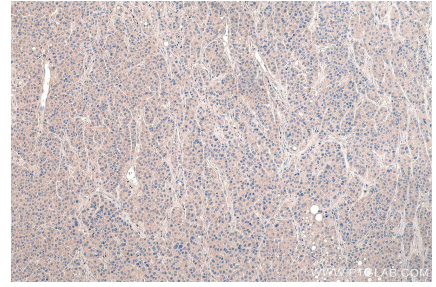
Selected Validation Data



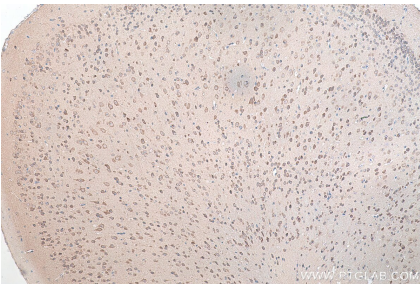
Immunohistochemical analysis of paraffin-embedded human colon cancer tissue slide using KHC0171 (EIF3I IHC Kit).



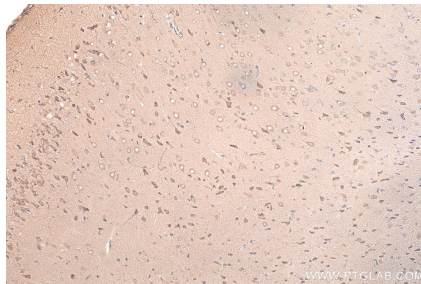
Immunohistochemical analysis of paraffin-embedded human lung cancer tissue slide using KHC0171 (EIF3I IHC Kit).



Immunohistochemical analysis of paraffin-embedded human liver cancer tissue slide using KHC0171 (EIF3I IHC Kit).



Immunohistochemical analysis of paraffin-embedded mouse brain tissue slide using KHC0171 (EIF3I IHC Kit).



Immunohistochemical analysis of paraffin-embedded rat brain tissue slide using KHC0171 (EIF3I IHC Kit).