

# IHC*easy* GAST Ready-To-Use IHC Kit

Catalog Number: **KHC0282**

## General Information

**Sample type:**  
FFPE tissue

**Cited sample type:**

**Reactivity:**  
Human, Mouse

**Cited Reactivity:**

**Assay type:**  
Immunohistochemistry

**Primary antibody type:**  
Mouse Monoclonal

**Secondary antibody type:**  
Polymer-HRP-Goat anti-Mouse

## Kit Component

Component	Size	Concentration
Antigen Retrieval Buffer	100 mL	50×
Washing Buffer	100 mL ×2	20×
Blocking Buffer	5 mL	RTU
Primary Antibody	5 mL	RTU
Secondary Antibody	5 mL	RTU
Chromogen Component A	0.2 mL	RTU
Chromogen Component B	4 mL	RTU
Signal Enhancer	5 mL	RTU
Counter Staining Reagent	5 mL	RTU
Mounting Media	5 mL	RTU
Control Slide	1 slide (Optional)	FFPE
Datasheet	1 Copy	
Manual	1 Copy	

## Storage Instructions

All the reagents are stored at 2-8°C. The kit is stable for 6 months from the date of receipt.

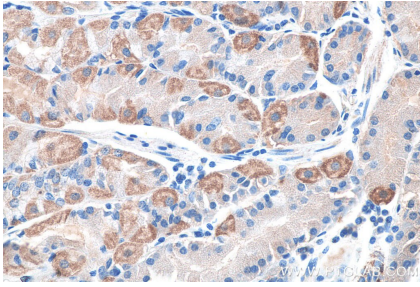
## Background

Gastrin is a hormone produced primarily by G-cells in the stomach, where it functions to stimulate acid secretion by gastric parietal cells. Gastrin is a promiscuous hormone. Thus, the gastrin gene is expressed in common cancers such as bronchogenic, colorectal, ovarian and pancreatic carcinomas.

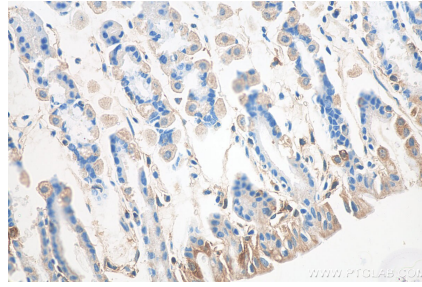
## Synonyms

G14 Gastrin 6, G17 Gastrin 14, G34 Gastrin, G52 Big gastrin, G6, GAS, GAST, gastrin, Gastrin 17, Gastrin 34, Gastrin component I Gastrin 52, Gastrin component II, Gastrin component III

## Selected Validation Data



Immunohistochemical analysis of paraffin-embedded human stomach tissue slide using KHC0282 (GAST IHC Kit).



Immunohistochemical analysis of paraffin-embedded mouse stomach tissue slide using KHC0282 (GAST IHC Kit).