

IHC*easy* MYO6 Ready-To-Use IHC Kit

Catalog Number: **KHC0357**

General Information

Sample type:
FFPE tissue

Cited sample type:

Reactivity:
Human, Mouse, Rat

Cited Reactivity:

Assay type:
Immunohistochemistry

Primary antibody type:
Rabbit Polyclonal

Secondary antibody type:
Polymer-HRP-Goat anti-Rabbit

Kit Component

Component	Size	Concentration
Antigen Retrieval Buffer	100 mL	50×
Washing Buffer	100 mL ×2	20×
Blocking Buffer	5 mL	RTU
Primary Antibody	5 mL	RTU
Secondary Antibody	5 mL	RTU
Chromogen Component A	0.2 mL	RTU
Chromogen Component B	4 mL	RTU
Signal Enhancer	5 mL	RTU
Counter Staining Reagent	5 mL	RTU
Mounting Media	5 mL	RTU
Control Slide	1 slide (Optional)	FFPE
Datasheet	1 Copy	
Manual	1 Copy	

Storage Instructions

All the reagents are stored at 2-8°C. The kit is stable for 6 months from the date of receipt.

Background

MYO6, an actin-based motor protein, is the only myosin known to move toward the minus end of actin filaments. MYO6 is highly expressed in the inner and outer hair cells of the ear, retina, and polarized epithelial cells such as kidney proximal tubule cells and intestinal enterocytes. And it participates in a wide range of biological processes within cells, including clathrin-mediated endocytosis, vesicular membrane traffic, polarized secretion, and autophagy. Previous studies showed that MYO6 is upregulated in various types of cancer, and it has been widely reported to contribute to tumor cell migration and metastasis. Some articles indicate that MYO6 is associated with prostate cancer, lung cancer, human colorectal cancer and gastric cancer.

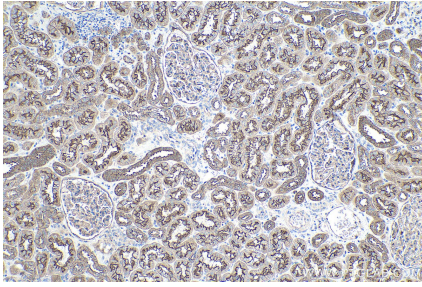
Synonyms

DFNA22, DFNB37, KIAA0389, MYO6, myosin VI, Unconventional myosin 6

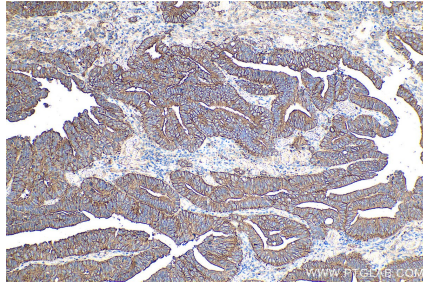
For technical support and original validation data for this product please contact:
T: 1 (888) 4PTGLAB (1-888-478-4522) (toll free in USA), or 1(312) 455-8498 (outside USA)
E: proteintech@ptglab.com
W: ptglab.com

This product is exclusively available under Proteintech Group brand and is not available to purchase from any other manufacturer.

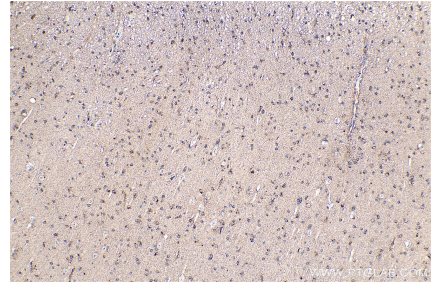
Selected Validation Data



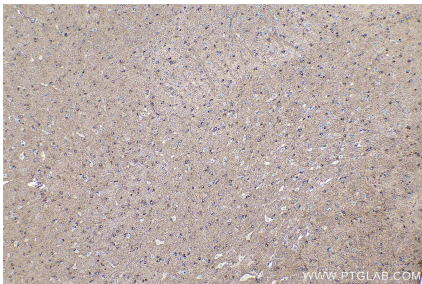
Immunohistochemical analysis of paraffin-embedded human kidney tissue slide using KHC0357 (MYO6 IHC Kit).



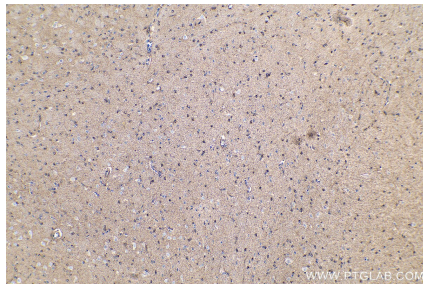
Immunohistochemical analysis of paraffin-embedded human colon cancer tissue slide using KHC0357 (MYO6 IHC Kit).



Immunohistochemical analysis of paraffin-embedded human gliomas tissue slide using KHC0357 (MYO6 IHC Kit).



Immunohistochemical analysis of paraffin-embedded mouse brain tissue slide using KHC0357 (MYO6 IHC Kit).



Immunohistochemical analysis of paraffin-embedded rat brain tissue slide using KHC0357 (MYO6 IHC Kit).