

# IHC*easy* CYP2J2 Ready-To-Use IHC Kit

Catalog Number: **KHC0413**

## General Information

**Sample type:**  
FFPE tissue

**Cited sample type:**

**Reactivity:**  
Human, Mouse, Rat

**Cited Reactivity:**

**Assay type:**  
Immunohistochemistry

**Primary antibody type:**  
Rabbit Polyclonal

**Secondary antibody type:**  
Polymer-HRP-Goat anti-Rabbit

## Kit Component

Component	Size	Concentration
Antigen Retrieval Buffer	100 mL	50×
Washing Buffer	100 mL ×2	20×
Blocking Buffer	5 mL	RTU
Primary Antibody	5 mL	RTU
Secondary Antibody	5 mL	RTU
Chromogen Component A	0.2 mL	RTU
Chromogen Component B	4 mL	RTU
Signal Enhancer	5 mL	RTU
Counter Staining Reagent	5 mL	RTU
Mounting Media	5 mL	RTU
Control Slide	1 slide (Optional)	FFPE
Datasheet	1 Copy	
Manual	1 Copy	

## Storage Instructions

All the reagents are stored at 2-8°C. The kit is stable for 6 months from the date of receipt.

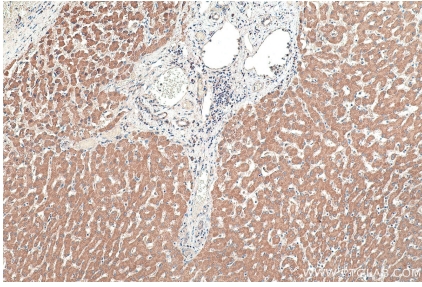
## Background

CYP2J2(Cytochrome P450 2J2) belongs to the cytochrome P450 family. This enzyme metabolizes arachidonic acid predominantly via a NADPH-dependent olefin epoxidation to all four regioisomeric cis-epoxyeicosatrienoic acids. The human CYP2J member, CYP2J2, is shown to be expressed in several tissues such as the small intestine, liver, heart, kidney, and lung and may play a role in the oxidative bioactivation of arachidonic acid.

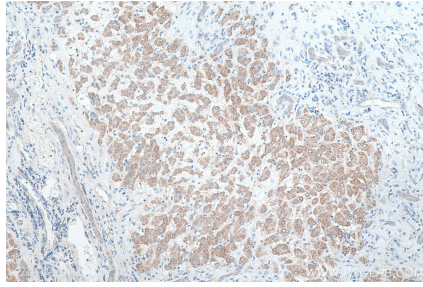
## Synonyms

Arachidonic acid epoxygenase, CPJ2, CYP2J2, CYP11J2, Cytochrome P450 2J2

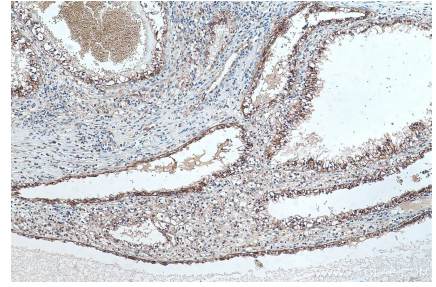
## Selected Validation Data



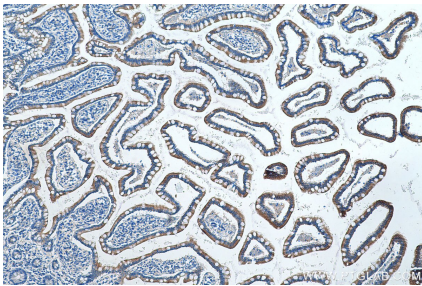
Immunohistochemical analysis of paraffin-embedded human liver tissue slide using KHC0413 (CYP2J2 IHC Kit).



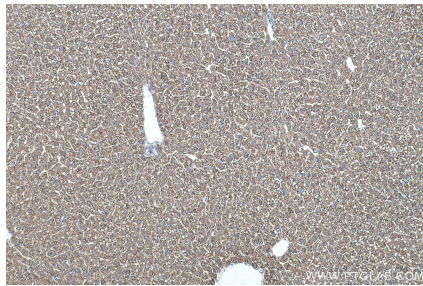
Immunohistochemical analysis of paraffin-embedded human liver cancer tissue slide using KHC0413 (CYP2J2 IHC Kit).



Immunohistochemical analysis of paraffin-embedded human renal cell carcinoma tissue slide using KHC0413 (CYP2J2 IHC Kit).



Immunohistochemical analysis of paraffin-embedded human small intestine tissue slide using KHC0413 (CYP2J2 IHC Kit).



Immunohistochemical analysis of paraffin-embedded mouse liver tissue slide using KHC0413 (CYP2J2 IHC Kit).