

IHC*easy* TMEM16A/DOG1 Ready-To-Use IHC Kit

Catalog Number: **KHC0604**

General Information

Sample type:
FFPE tissue
Cited sample type:
Reactivity:
Human
Cited Reactivity:

Assay type:
Immunohistochemistry
Primary antibody type:
Rabbit Polyclonal
Secondary antibody type:
Polymer-HRP-Goat anti-Rabbit

Kit Component

| Component | Size | Concentration |
|--------------------------|--------------------|---------------|
| Antigen Retrieval Buffer | 100 mL | 50× |
| Washing Buffer | 100 mL ×2 | 20× |
| Blocking Buffer | 5 mL | RTU |
| Primary Antibody | 5 mL | RTU |
| Secondary Antibody | 5 mL | RTU |
| Chromogen Component A | 0.2 mL | RTU |
| Chromogen Component B | 4 mL | RTU |
| Signal Enhancer | 5 mL | RTU |
| Counter Staining Reagent | 5 mL | RTU |
| Mounting Media | 5 mL | RTU |
| Control Slide | 1 slide (Optional) | FFPE |
| Datasheet | 1 Copy | |
| Manual | 1 Copy | |

Storage Instructions

All the reagents are stored at 2-8°C. The kit is stable for 6 months from the date of receipt.

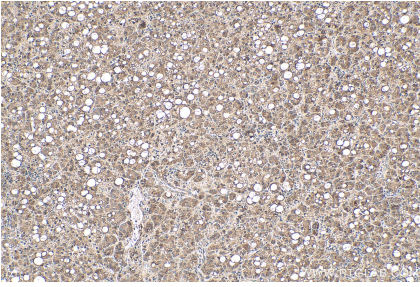
Background

ANO1 also named as DOG1, ORAOV2, TAOS2 and TMEM16A, acts as a calcium-activated chloride channel. It is required for normal tracheal development. ANO1 (or DOG1) is used as an aid in the identification and diagnosis of gastrointestinal stromal tumors (GIST) within the context of an antibody panel, the patient's clinical history, and other diagnostic tests evaluated by a qualified pathologist.

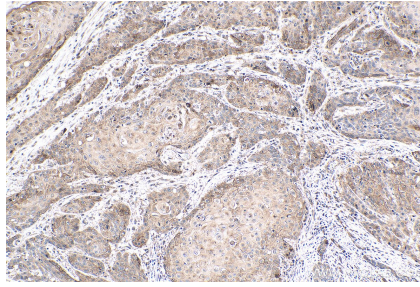
Synonyms

ANO1, Anoctamin 1, DOG1, ORAOV2, TAOS2, TMEM16A, TMEM16A/DOG1, Transmembrane protein 16A

Selected Validation Data



Immunohistochemical analysis of paraffin-embedded human liver cancer tissue slide using KHC0604 (TMEM16A/DOG1 IHC Kit).



Immunohistochemical analysis of paraffin-embedded human oesophagus cancer tissue slide using KHC0604 (TMEM16A/DOG1 IHC Kit).