

IHC*easy* Caspase 2 Ready-To-Use IHC Kit

Catalog Number: **KHC0606**

General Information

Sample type:
FFPE tissue

Cited sample type:

Reactivity:
Human, Mouse, Rat

Cited Reactivity:

Assay type:
Immunohistochemistry

Primary antibody type:
Rabbit Polyclonal

Secondary antibody type:
Polymer-HRP-Goat anti-Rabbit

Kit Component

Component	Size	Concentration
Antigen Retrieval Buffer	100 mL	50×
Washing Buffer	100 mL ×2	20×
Blocking Buffer	5 mL	RTU
Primary Antibody	5 mL	RTU
Secondary Antibody	5 mL	RTU
Chromogen Component A	0.2 mL	RTU
Chromogen Component B	4 mL	RTU
Signal Enhancer	5 mL	RTU
Counter Staining Reagent	5 mL	RTU
Mounting Media	5 mL	RTU
Control Slide	1 slide (Optional)	FFPE
Datasheet	1 Copy	
Manual	1 Copy	

Storage Instructions

All the reagents are stored at 2-8°C. The kit is stable for 6 months from the date of receipt.

Background

CASP2(Caspase-2) is also named as ICH1, NEDD2 and belongs to the peptidase C14A family. It is involved in the activation cascade of caspases responsible for apoptosis execution and might function by either activating some proteins required for cell death or inactivating proteins necessary for cell survival. It has 2 isoforms produced by alternative splicing and can exist almost as a dimer in solution.

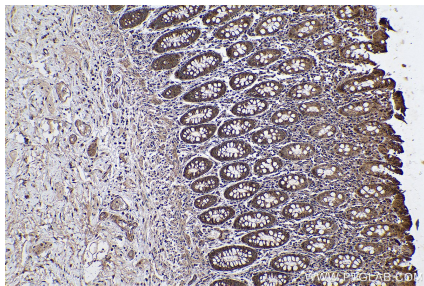
Synonyms

CASP 2, CASP2, Caspase 2, Caspase 2/p18, Caspase 2/p32/p18, Caspase2, ICH 1L, ICH 1L/1S, ICH1, NEDD 2, NEDD2, Protease ICH 1

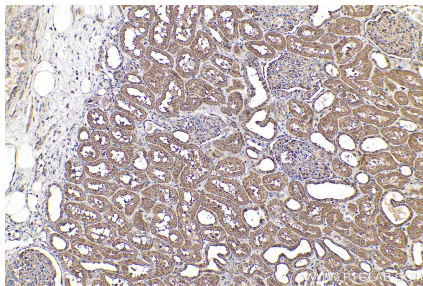
For technical support and original validation data for this product please contact:
T: 1 (888) 4PTGLAB (1-888-478-4522) (toll free in USA), or 1(312) 455-8498 (outside USA)
E: proteintech@ptglab.com
W: ptglab.com

This product is exclusively available under Proteintech Group brand and is not available to purchase from any other manufacturer.

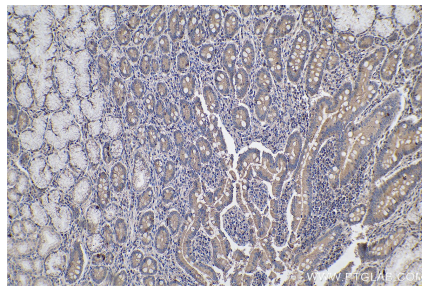
Selected Validation Data



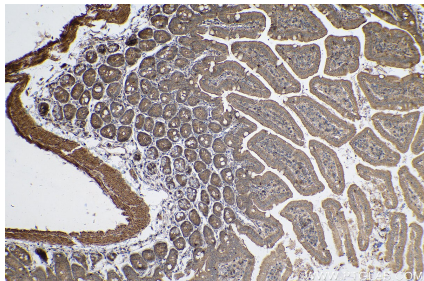
Immunohistochemical analysis of paraffin-embedded human colon tissue slide using KHC0606 (Caspase 2/p32/p18 IHC Kit).



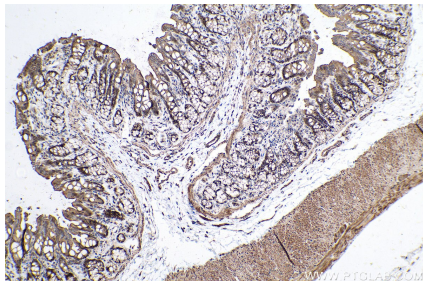
Immunohistochemical analysis of paraffin-embedded human kidney tissue slide using KHC0606 (Caspase 2/p32/p18 IHC Kit).



Immunohistochemical analysis of paraffin-embedded human stomach cancer tissue slide using KHC0606 (Caspase 2/p32/p18 IHC Kit).



Immunohistochemical analysis of paraffin-embedded mouse small intestine tissue slide using KHC0606 (Caspase 2/p32/p18 IHC Kit).



Immunohistochemical analysis of paraffin-embedded rat colon tissue slide using KHC0606 (Caspase 2/p32/p18 IHC Kit).