

IHC*easy* WWOX Ready-To-Use IHC Kit

Catalog Number: **KHC0651**

General Information

Sample type:
FFPE tissue

Cited sample type:

Reactivity:
Human, Mouse, Rat

Cited Reactivity:

Assay type:
Immunohistochemistry

Primary antibody type:
Mouse Monoclonal

Secondary antibody type:
Polymer-HRP-Goat anti-Mouse

Kit Component

Component	Size	Concentration
Antigen Retrieval Buffer	100 mL	50×
Washing Buffer	100 mL ×2	20×
Blocking Buffer	5 mL	RTU
Primary Antibody	5 mL	RTU
Secondary Antibody	5 mL	RTU
Chromogen Component A	0.2 mL	RTU
Chromogen Component B	4 mL	RTU
Signal Enhancer	5 mL	RTU
Counter Staining Reagent	5 mL	RTU
Mounting Media	5 mL	RTU
Control Slide	1 slide (Optional)	FFPE
Datasheet	1 Copy	
Manual	1 Copy	

Storage Instructions

All the reagents are stored at 2-8°C. The kit is stable for 6 months from the date of receipt.

Background

WWOX(WW domain-containing oxidoreductase) is also named as FOR, WOX1 and belongs to the short-chain dehydrogenases/reductases (SDR) family. The gene encodes a protein that contains two WW domains and a short-chain dehydrogenase/reductase domain and the protein is lost or reduced in the majority of many cancer types including breast, prostate, esophageal, lung, stomach, and pancreatic carcinomas and in a large fraction of other cancer types. WWOX behaves as a potential tumor-suppressor gene. It has 7 isoforms produced by alternative splicing.

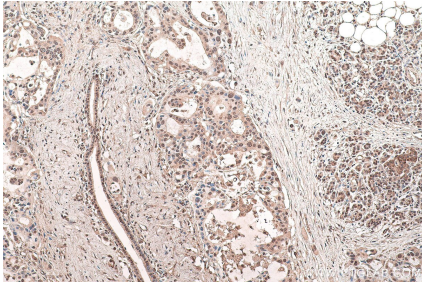
Synonyms

D16S432E, FOR, FRA16D, HHCMA56, PRO0128, SDR41C1, WOX1, WWOX

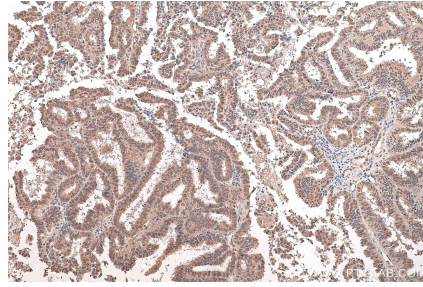
For technical support and original validation data for this product please contact:
T: 1 (888) 4PTGLAB (1-888-478-4522) (toll free in USA), or 1(312) 455-8498 (outside USA)
E: proteintech@ptglab.com
W: ptglab.com

This product is exclusively available under Proteintech Group brand and is not available to purchase from any other manufacturer.

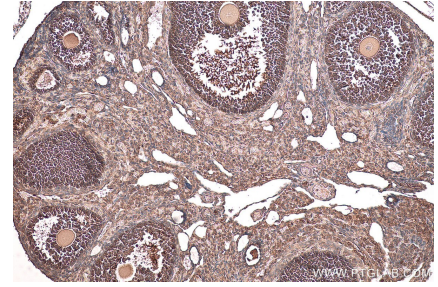
Selected Validation Data



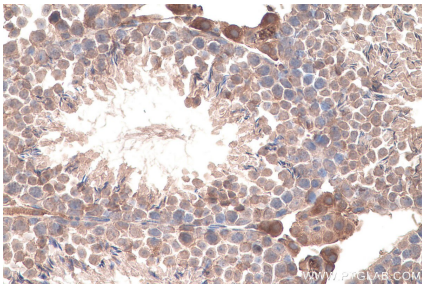
Immunohistochemical analysis of paraffin-embedded human pancreas cancer tissue slide using KHC0651 (WVOX IHC Kit).



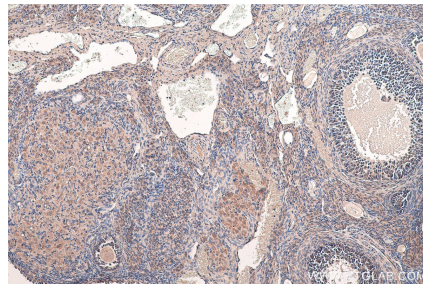
Immunohistochemical analysis of paraffin-embedded human ovary tumor tissue slide using KHC0651 (WVOX IHC Kit).



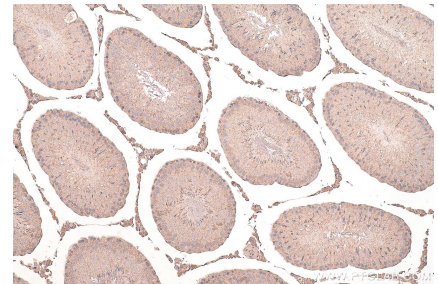
Immunohistochemical analysis of paraffin-embedded mouse ovary tissue slide using KHC0651 (WVOX IHC Kit).



Immunohistochemical analysis of paraffin-embedded mouse testis tissue slide using KHC0651 (WVOX IHC Kit).



Immunohistochemical analysis of paraffin-embedded rat ovary tissue slide using KHC0651 (WVOX IHC Kit).



Immunohistochemical analysis of paraffin-embedded rat testis tissue slide using KHC0651 (WVOX IHC Kit).