

IHC*easy* ANP32A Ready-To-Use IHC Kit

Catalog Number: **KHC0670**

General Information

Sample type:
FFPE tissue

Cited sample type:

Reactivity:
Human, Mouse, Rat

Cited Reactivity:

Assay type:
Immunohistochemistry

Primary antibody type:
Mouse Monoclonal

Secondary antibody type:
Polymer-HRP-Goat anti-Mouse

Kit Component

Component	Size	Concentration
Antigen Retrieval Buffer	100 mL	50×
Washing Buffer	100 mL × 2	20×
Blocking Buffer	5 mL	RTU
Primary Antibody	5 mL	RTU
Secondary Antibody	5 mL	RTU
Chromogen Component A	0.2 mL	RTU
Chromogen Component B	4 mL	RTU
Signal Enhancer	5 mL	RTU
Counter Staining Reagent	5 mL	RTU
Mounting Media	5 mL	RTU
Control Slide	1 slide (Optional)	FFPE
Datasheet	1 Copy	
Manual	1 Copy	

Storage Instructions

All the reagents are stored at 2-8°C. The kit is stable for 6 months from the date of receipt.

Background

ANP32A, an acidic leucine-rich nuclear phosphoprotein, is a member of the inhibitor of the histone acetyltransferase (INHAT) complex and preferentially binds to unmodified histone H3 tails in vitro. ANP32A is expressed in normal tissues as well as in pancreatic, breast and prostate cancer and other malignant tumors. ANP32A plays an important role in cell proliferation, apoptosis, transcriptional regulation, signal transduction and other processes.

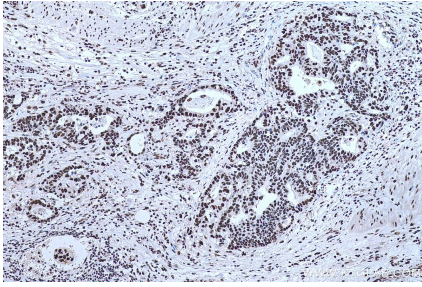
Synonyms

ANP32A, C15orf1, I1PP2A, LANP, MAPM, Mapmodulin, PHAP1, PHAPI, PP32

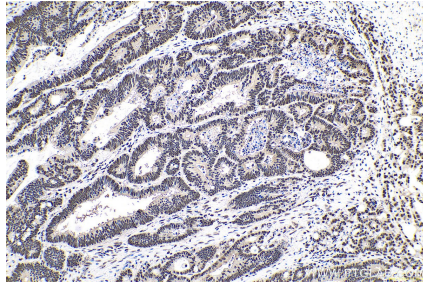
For technical support and original validation data for this product please contact:
T: 1 (888) 4PTGLAB (1-888-478-4522) (toll free in USA), or 1(312) 455-8498 (outside USA)
E: proteintech@ptglab.com
W: ptglab.com

This product is exclusively available under Proteintech Group brand and is not available to purchase from any other manufacturer.

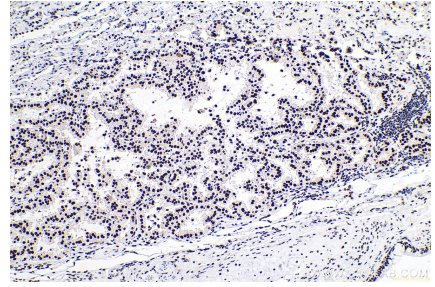
Selected Validation Data



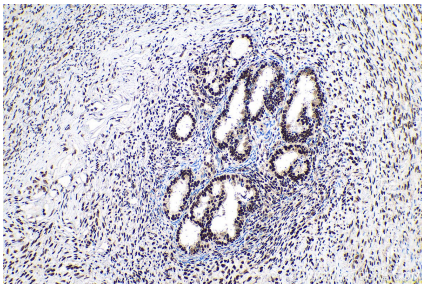
Immunohistochemical analysis of paraffin-embedded human stomach cancer tissue slide using KHC0670 (ANP32A IHC Kit).



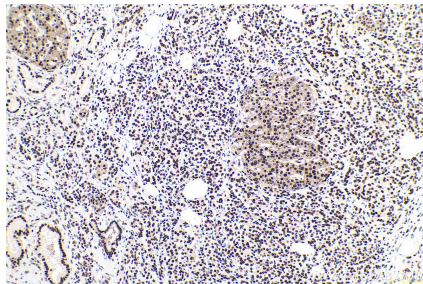
Immunohistochemical analysis of paraffin-embedded human colon cancer tissue slide using KHC0670 (ANP32A IHC Kit).



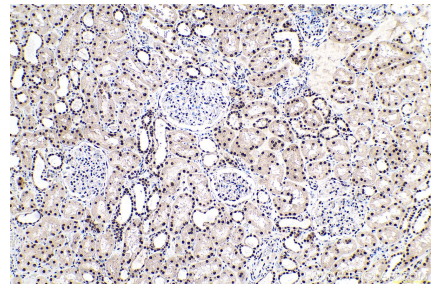
Immunohistochemical analysis of paraffin-embedded human lung cancer tissue slide using KHC0670 (ANP32A IHC Kit).



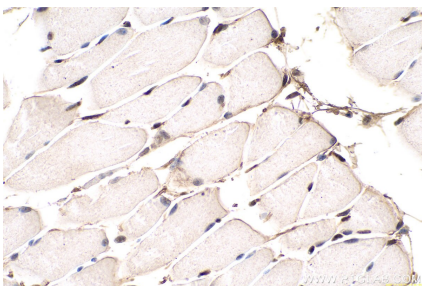
Immunohistochemical analysis of paraffin-embedded human ovary tumor tissue slide using KHC0670 (ANP32A IHC Kit).



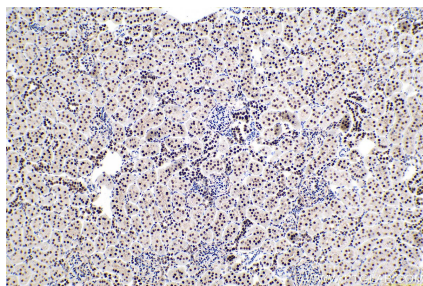
Immunohistochemical analysis of paraffin-embedded human pancreas cancer tissue slide using KHC0670 (ANP32A IHC Kit).



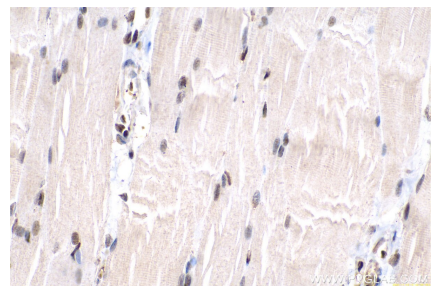
Immunohistochemical analysis of paraffin-embedded human kidney tissue slide using KHC0670 (ANP32A IHC Kit).



Immunohistochemical analysis of paraffin-embedded mouse skeletal muscle tissue slide using KHC0670 (ANP32A IHC Kit).



Immunohistochemical analysis of paraffin-embedded rat kidney tissue slide using KHC0670 (ANP32A IHC Kit).



Immunohistochemical analysis of paraffin-embedded rat skeletal muscle tissue slide using KHC0670 (ANP32A IHC Kit).