

# IHC*easy* RAB7A Ready-To-Use IHC Kit

Catalog Number: **KHC0700**

## General Information

**Sample type:**  
FFPE tissue

**Cited sample type:**

**Reactivity:**  
Human, Mouse, Rat

**Cited Reactivity:**

**Assay type:**  
Immunohistochemistry

**Primary antibody type:**  
Rabbit Polyclonal

**Secondary antibody type:**  
Polymer-HRP-Goat anti-Rabbit

## Kit Component

Component	Size	Concentration
Antigen Retrieval Buffer	100 mL	50×
Washing Buffer	100 mL ×2	20×
Blocking Buffer	5 mL	RTU
Primary Antibody	5 mL	RTU
Secondary Antibody	5 mL	RTU
Chromogen Component A	0.2 mL	RTU
Chromogen Component B	4 mL	RTU
Signal Enhancer	5 mL	RTU
Counter Staining Reagent	5 mL	RTU
Mounting Media	5 mL	RTU
Control Slide	1 slide (Optional)	FFPE
Datasheet	1 Copy	
Manual	1 Copy	

## Storage Instructions

All the reagents are stored at 2-8°C. The kit is stable for 6 months from the date of receipt.

## Background

RAB7A, also named as RAB7, belongs to the small GTPase superfamily and Rab family. It is involved in late endocytic transport. RAB7A contributes to the maturation of phagosomes (acidification). Defects in RAB7A are the cause of Charcot-Marie-Tooth disease type 2B (CMT2B). Primary antibody in this kit is specific to RAB7A.

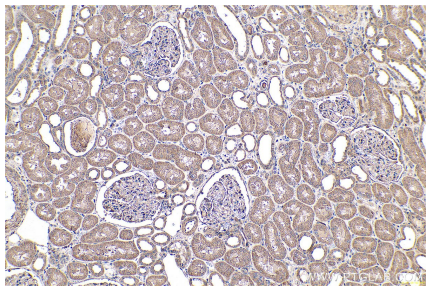
## Synonyms

PRO2706, RAB7, RAB7A, Ras related protein Rab 7a

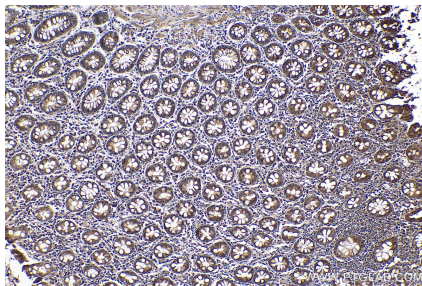
For technical support and original validation data for this product please contact:  
T: 1 (888) 4PTGLAB (1-888-478-4522) (toll free in USA), or 1(312) 455-8498 (outside USA)  
E: [proteintech@ptglab.com](mailto:proteintech@ptglab.com)  
W: [ptglab.com](http://ptglab.com)

This product is exclusively available under Proteintech Group brand and is not available to purchase from any other manufacturer.

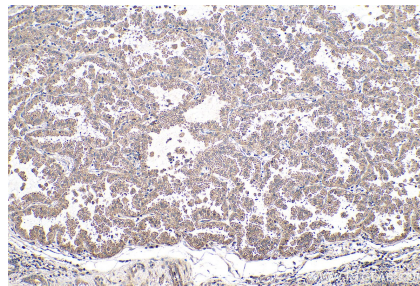
## Selected Validation Data



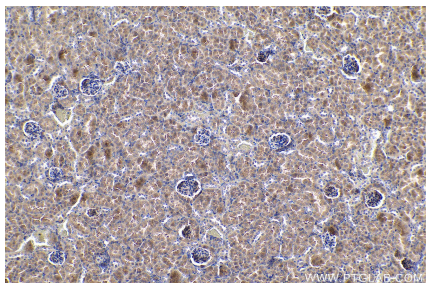
Immunohistochemical analysis of paraffin-embedded human kidney tissue slide using KHC0700 (RAB7A IHC Kit).



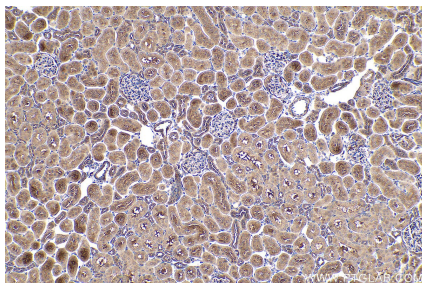
Immunohistochemical analysis of paraffin-embedded human colon tissue slide using KHC0700 (RAB7A IHC Kit).



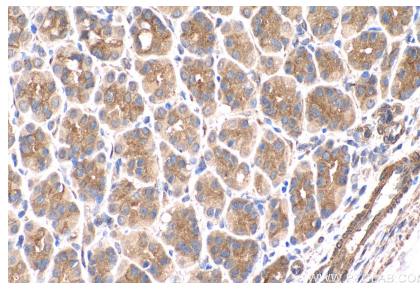
Immunohistochemical analysis of paraffin-embedded human lung cancer tissue slide using KHC0700 (RAB7A IHC Kit).



Immunohistochemical analysis of paraffin-embedded mouse kidney tissue slide using KHC0700 (RAB7A IHC Kit).



Immunohistochemical analysis of paraffin-embedded rat kidney tissue slide using KHC0700 (RAB7A IHC Kit).



Immunohistochemical analysis of paraffin-embedded rat stomach tissue slide using KHC0700 (RAB7A IHC Kit).