

IHC*easy* SEC31A Ready-To-Use IHC Kit

Catalog Number: **KHC0703**

General Information

Sample type:
FFPE tissue

Cited sample type:

Reactivity:
Human, Mouse

Cited Reactivity:

Assay type:
Immunohistochemistry

Primary antibody type:
Rabbit Polyclonal

Secondary antibody type:
Polymer-HRP-Goat anti-Rabbit

Kit Component

Component	Size	Concentration
Antigen Retrieval Buffer	100 mL	50×
Washing Buffer	100 mL ×2	20×
Blocking Buffer	5 mL	RTU
Primary Antibody	5 mL	RTU
Secondary Antibody	5 mL	RTU
Chromogen Component A	0.2 mL	RTU
Chromogen Component B	4 mL	RTU
Signal Enhancer	5 mL	RTU
Counter Staining Reagent	5 mL	RTU
Mounting Media	5 mL	RTU
Control Slide	1 slide (Optional)	FFPE
Datasheet	1 Copy	
Manual	1 Copy	

Storage Instructions

All the reagents are stored at 2-8°C. The kit is stable for 6 months from the date of receipt.

Background

COPII-coated vesicles mediate anterograde transport from the ER to the Golgi apparatus. COPII is composed of three parts: two coat protein complexes (Sec23/24 complex and Sec13/31 complex) and one small GTP-binding protein, Sar1. Sec31 subunit of the coat complex has been shown to be essential for vesicle formation and ER-Golgi transport. Two mammalian homologues of yeast sec31p, Sec31A and Sec31B, share about 40% amino acid identity. Sec31A transcripts are ubiquitously and abundantly expressed.

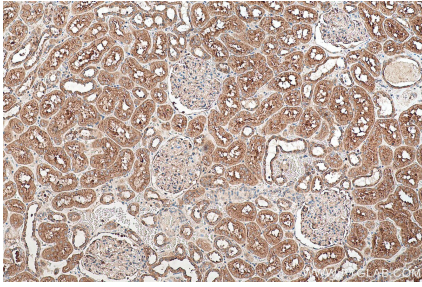
Synonyms

ABP125, ABP130, HSPC275, HSPC334, KIAA0905, SEC31 like protein 1, SEC31 related protein A, SEC31A, SEC31L1, Web1 like protein

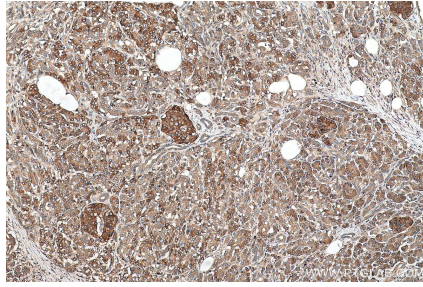
For technical support and original validation data for this product please contact:
T: 1 (888) 4PTGLAB (1-888-478-4522) (toll free in USA), or 1(312) 455-8498 (outside USA)
E: proteintech@ptglab.com
W: ptglab.com

This product is exclusively available under Proteintech Group brand and is not available to purchase from any other manufacturer.

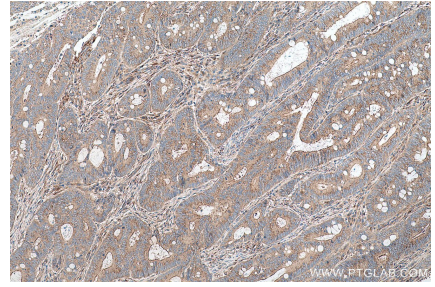
Selected Validation Data



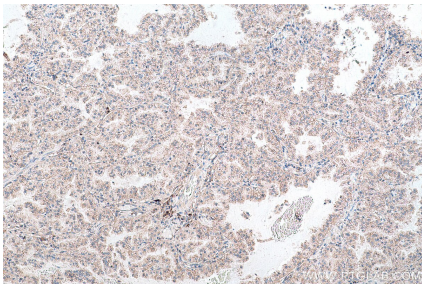
Immunohistochemical analysis of paraffin-embedded human kidney tissue slide using KHC0703 (SEC31A IHC Kit).



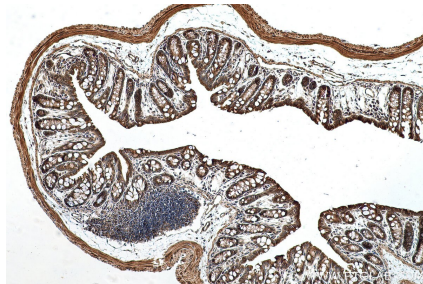
Immunohistochemical analysis of paraffin-embedded human pancreas cancer tissue slide using KHC0703 (SEC31A IHC Kit).



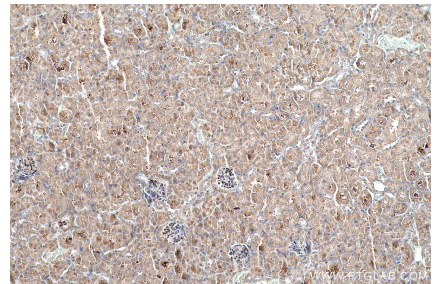
Immunohistochemical analysis of paraffin-embedded human colon cancer tissue slide using KHC0703 (SEC31A IHC Kit).



Immunohistochemical analysis of paraffin-embedded human lung cancer tissue slide using KHC0703 (SEC31A IHC Kit).



Immunohistochemical analysis of paraffin-embedded mouse colon tissue slide using KHC0703 (SEC31A IHC Kit).



Immunohistochemical analysis of paraffin-embedded mouse kidney tissue slide using KHC0703 (SEC31A IHC Kit).