

IHC*easy* ANXA11 Ready-To-Use IHC Kit

Catalog Number: **KHC0708**

General Information

Sample type:
FFPE tissue

Cited sample type:

Reactivity:
Human, Mouse, Rat

Cited Reactivity:

Assay type:
Immunohistochemistry

Primary antibody type:
Mouse Monoclonal

Secondary antibody type:
Polymer-HRP-Goat anti-Mouse

Kit Component

| Component | Size | Concentration |
|--------------------------|--------------------|---------------|
| Antigen Retrieval Buffer | 100 mL | 50× |
| Washing Buffer | 100 mL ×2 | 20× |
| Blocking Buffer | 5 mL | RTU |
| Primary Antibody | 5 mL | RTU |
| Secondary Antibody | 5 mL | RTU |
| Chromogen Component A | 0.2 mL | RTU |
| Chromogen Component B | 4 mL | RTU |
| Signal Enhancer | 5 mL | RTU |
| Counter Staining Reagent | 5 mL | RTU |
| Mounting Media | 5 mL | RTU |
| Control Slide | 1 slide (Optional) | FFPE |
| Datasheet | 1 Copy | |
| Manual | 1 Copy | |

Storage Instructions

All the reagents are stored at 2-8°C. The kit is stable for 6 months from the date of receipt.

Background

Annexin A11 (Anxa11) is one member of annexins that are Ca²⁺-regulated phospholipid-binding proteins. Annexin A11 plays an important role in cell division, differentiation, apoptosis, vesicle trafficking and Ca²⁺ signaling. Annexin A11 dysregulation is involved in the progression, drug-resistance, recurrence of systemic autoimmune disease and cancer.

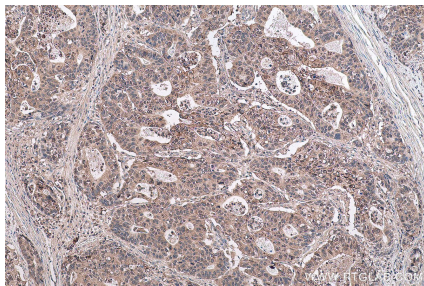
Synonyms

56 kDa autoantigen, Annexin 11, annexin A11, Annexin XI, ANX11, ANXA11, CAP 50, CAP50

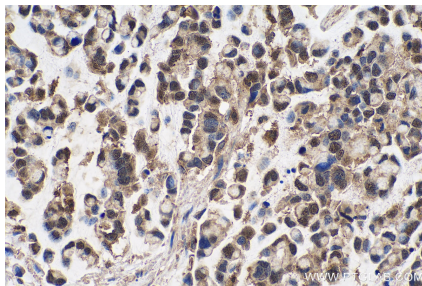
For technical support and original validation data for this product please contact:
T: 1 (888) 4PTGLAB (1-888-478-4522) (toll free in USA), or 1(312) 455-8498 (outside USA)
E: proteintech@ptglab.com
W: ptglab.com

This product is exclusively available under Proteintech Group brand and is not available to purchase from any other manufacturer.

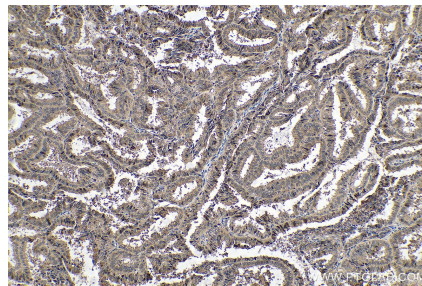
Selected Validation Data



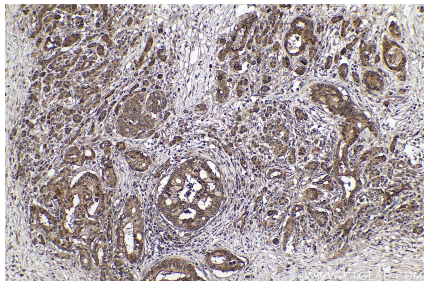
Immunohistochemical analysis of paraffin-embedded human stomach cancer tissue slide using KHC0708 (ANXA11 IHC Kit).



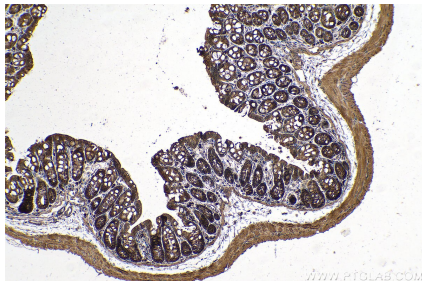
Immunohistochemical analysis of paraffin-embedded human colon cancer tissue slide using KHC0708 (ANXA11 IHC Kit).



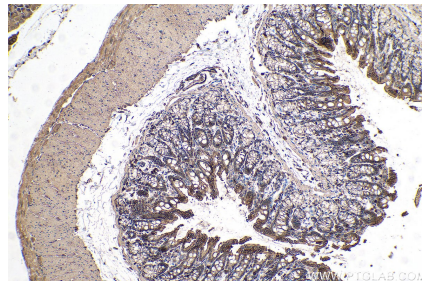
Immunohistochemical analysis of paraffin-embedded human ovary tumor tissue slide using KHC0708 (ANXA11 IHC Kit).



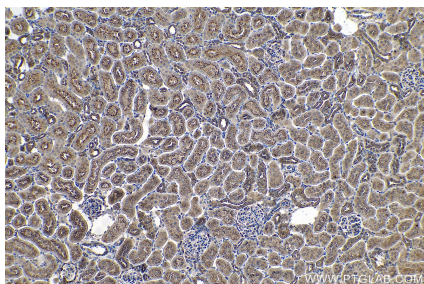
Immunohistochemical analysis of paraffin-embedded human pancreas cancer tissue slide using KHC0708 (ANXA11 IHC Kit).



Immunohistochemical analysis of paraffin-embedded mouse colon tissue slide using KHC0708 (ANXA11 IHC Kit).



Immunohistochemical analysis of paraffin-embedded rat colon tissue slide using KHC0708 (ANXA11 IHC Kit).



Immunohistochemical analysis of paraffin-embedded rat kidney tissue slide using KHC0708 (ANXA11 IHC Kit).