

IHC*easy* CMPK1 Ready-To-Use IHC Kit

Catalog Number: **KHC0727**

General Information

Sample type:
FFPE tissue

Cited sample type:

Reactivity:
Human, Mouse, Rat

Cited Reactivity:

Assay type:
Immunohistochemistry

Primary antibody type:
Rabbit Polyclonal

Secondary antibody type:
Polymer-HRP-Goat anti-Rabbit

Kit Component

Component	Size	Concentration
Antigen Retrieval Buffer	100 mL	50×
Washing Buffer	100 mL ×2	20×
Blocking Buffer	5 mL	RTU
Primary Antibody	5 mL	RTU
Secondary Antibody	5 mL	RTU
Chromogen Component A	0.2 mL	RTU
Chromogen Component B	4 mL	RTU
Signal Enhancer	5 mL	RTU
Counter Staining Reagent	5 mL	RTU
Mounting Media	5 mL	RTU
Control Slide	1 slide (Optional)	FFPE
Datasheet	1 Copy	
Manual	1 Copy	

Storage Instructions

All the reagents are stored at 2-8°C. The kit is stable for 6 months from the date of receipt.

Background

Pyrimidine nucleoside monophosphate kinase [UMP/CMP kinase (UMP/CMPK)] (CMPK1) is also named as CMK, CMPK, UCK, UMK, UMPK and belongs to the adenylate kinase family. It plays a crucial role in the formation of UDP, CDP, and dCDP, which are required for cellular nucleic acid synthesis. CMPK1 can use a broad spectrum of phosphate donors but the best phosphate donors are ATP and dATP. CMPK1 has been reported as a prognostic marker for non-small cell lung cancer, pancreatic cancer and breast cancer. The shorter form is the endogenously translated protein.

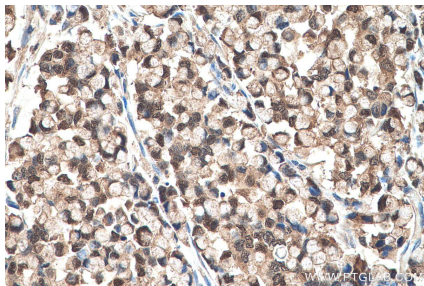
Synonyms

CMK, CMPK, CMPK1, Cytidine monophosphate kinase, Cytidylate kinase, Deoxycytidylate kinase, UCK, UMK, UMP CMP kinase, UMP CMPK, UMP/CMP kinase, UMP/CMPK, UMPK, Uridine monophosphate kinase

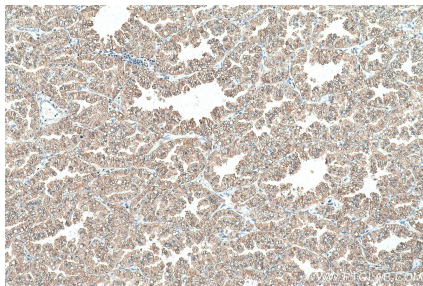
For technical support and original validation data for this product please contact:
T: 1 (888) 4PTGLAB (1-888-478-4522) (toll free in USA), or 1(312) 455-8498 (outside USA)
E: proteintech@ptglab.com
W: ptglab.com

This product is exclusively available under Proteintech Group brand and is not available to purchase from any other manufacturer.

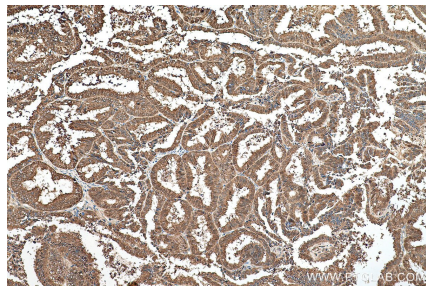
Selected Validation Data



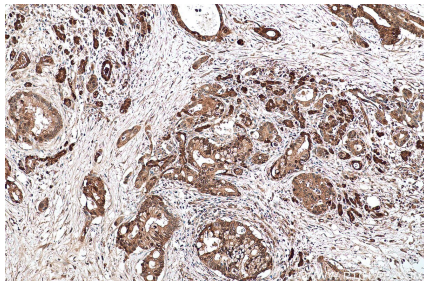
Immunohistochemical analysis of paraffin-embedded human colon cancer tissue slide using KHC0727 (CMPK1 IHC Kit).



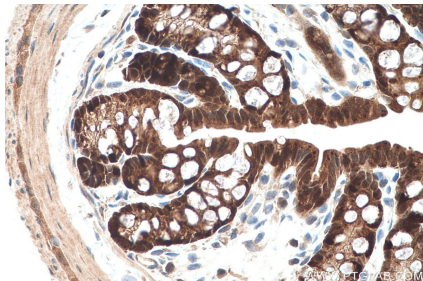
Immunohistochemical analysis of paraffin-embedded human lung cancer tissue slide using KHC0727 (CMPK1 IHC Kit).



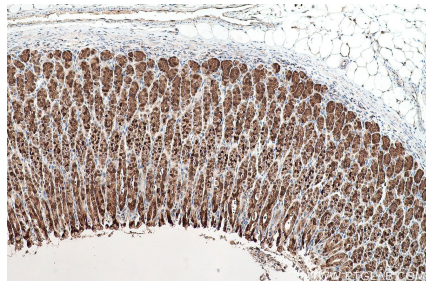
Immunohistochemical analysis of paraffin-embedded human ovary tumor tissue slide using KHC0727 (CMPK1 IHC Kit).



Immunohistochemical analysis of paraffin-embedded human pancreas cancer tissue slide using KHC0727 (CMPK1 IHC Kit).



Immunohistochemical analysis of paraffin-embedded mouse colon tissue slide using KHC0727 (CMPK1 IHC Kit).



Immunohistochemical analysis of paraffin-embedded rat stomach tissue slide using KHC0727 (CMPK1 IHC Kit).