

IHC*easy* SLC16A12 Ready-To-Use IHC Kit

Catalog Number: **KHC0809**

General Information

Sample type:
FFPE tissue

Cited sample type:

Reactivity:
Human, Mouse

Cited Reactivity:

Assay type:
Immunohistochemistry

Primary antibody type:
Rabbit Polyclonal

Secondary antibody type:
Polymer-HRP-Goat anti-Rabbit

Kit Component

Component	Size	Concentration
Antigen Retrieval Buffer	100 mL	50×
Washing Buffer	100 mL ×2	20×
Blocking Buffer	5 mL	RTU
Primary Antibody	5 mL	RTU
Secondary Antibody	5 mL	RTU
Chromogen Component A	0.2 mL	RTU
Chromogen Component B	4 mL	RTU
Signal Enhancer	5 mL	RTU
Counter Staining Reagent	5 mL	RTU
Mounting Media	5 mL	RTU
Control Slide	1 slide (Optional)	FFPE
Datasheet	1 Copy	
Manual	1 Copy	

Storage Instructions

All the reagents are stored at 2-8°C. The kit is stable for 6 months from the date of receipt.

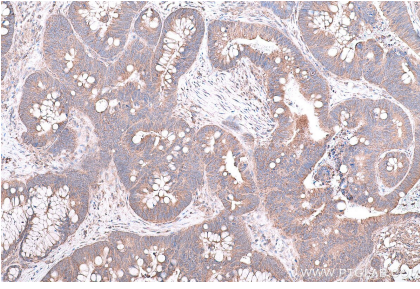
Background

SLC16A12, also named as MCT12 and CJMG, belongs to the major facilitator superfamily and Monocarboxylate porter (TC 2.A.1.13) family. It is a proton-linked monocarboxylate transporter. SLC16A12 catalyzes the rapid transport across the plasma membrane of many monocarboxylates.

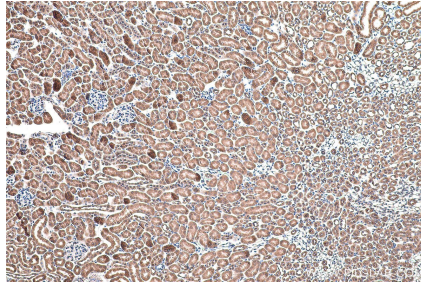
Synonyms

CJMG, MCT 12, MCT12, Monocarboxylate transporter 12, SLC16A12

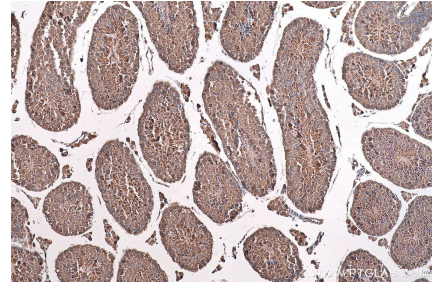
Selected Validation Data



Immunohistochemical analysis of paraffin-embedded human colon cancer tissue slide using KHC0809 (SLC16A12 IHC Kit).



Immunohistochemical analysis of paraffin-embedded mouse kidney tissue slide using KHC0809 (SLC16A12 IHC Kit).



Immunohistochemical analysis of paraffin-embedded mouse testis tissue slide using KHC0809 (SLC16A12 IHC Kit).