

IHC*easy* FOXO3A Ready-To-Use IHC Kit

Catalog Number: **KHC0815**

General Information

Sample type:
FFPE tissue

Cited sample type:

Reactivity:
Human, Mouse

Cited Reactivity:

Assay type:
Immunohistochemistry

Primary antibody type:
Mouse Monoclonal

Secondary antibody type:
Polymer-HRP-Goat anti-Mouse

Kit Component

Component	Size	Concentration
Antigen Retrieval Buffer	100 mL	50×
Washing Buffer	100 mL × 2	20×
Blocking Buffer	5 mL	RTU
Primary Antibody	5 mL	RTU
Secondary Antibody	5 mL	RTU
Chromogen Component A	0.2 mL	RTU
Chromogen Component B	4 mL	RTU
Signal Enhancer	5 mL	RTU
Counter Staining Reagent	5 mL	RTU
Mounting Media	5 mL	RTU
Control Slide	1 slide (Optional)	FFPE
Datasheet	1 Copy	
Manual	1 Copy	

Storage Instructions

All the reagents are stored at 2-8°C. The kit is stable for 6 months from the date of receipt.

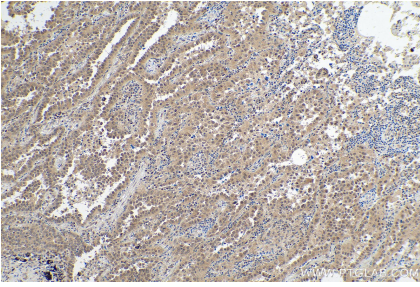
Background

In mammalian cells, FoxO factors act as potent transcriptional activators that upregulate the expression of programs of genes involved in stress resistance, cell cycle arrest, differentiation, apoptosis, autophagy, and metabolism. FOXO3 has a key role in the maintenance of adult neural and hematopoietic stem cells. It also associates with extreme longevity in humans and regulates the homeostasis of adult stem cell pools in mammals, which may contribute to longevity. Phosphorylation inhibits FOXO3 nuclear translocation that is essential for its regulation and function. FOXO3a protein is a phosphorylated via activation of PI3K (phosphatidylinositol 3-kinase) and Akt after INS stimulation, and translocate from the nucleus to the cytoplasm.

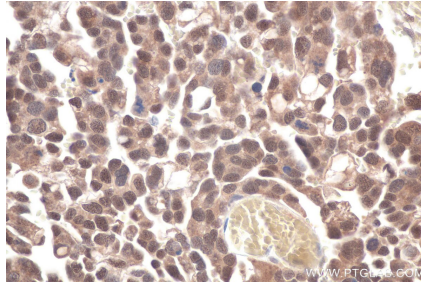
Synonyms

AF6q21, AF6q21 protein, FKHL1, FKHL1P2, forkhead box O3, Forkhead box protein O3, FOXO2, FOXO3, FOXO3A

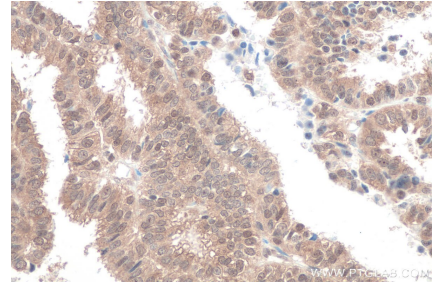
Selected Validation Data



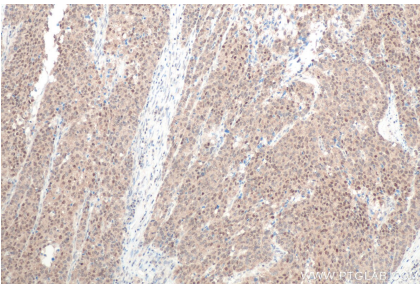
Immunohistochemical analysis of paraffin-embedded human lung cancer tissue slide using KHC0815 (FOXO3A IHC Kit).



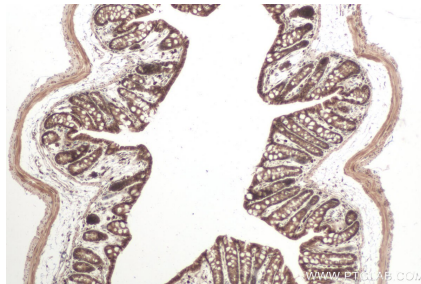
Immunohistochemical analysis of paraffin-embedded human colon cancer tissue slide using KHC0815 (FOXO3A IHC Kit).



Immunohistochemical analysis of paraffin-embedded human ovary tumor tissue slide using KHC0815 (FOXO3A IHC Kit).



Immunohistochemical analysis of paraffin-embedded human stomach cancer tissue slide using KHC0815 (FOXO3A IHC Kit).



Immunohistochemical analysis of paraffin-embedded mouse colon tissue slide using KHC0815 (FOXO3A IHC Kit).