

# IHC*easy* TACSTD2 Ready-To-Use IHC Kit

Catalog Number: **KHC0821**

## General Information

Sample type:  
FFPE tissue  
Cited sample type:  
Reactivity:  
Human  
Cited Reactivity:

Assay type:  
Immunohistochemistry  
Primary antibody type:  
Rabbit Polyclonal  
Secondary antibody type:  
Polymer-HRP-Goat anti-Rabbit

## Kit Component

Component	Size	Concentration
Antigen Retrieval Buffer	100 mL	50×
Washing Buffer	100 mL ×2	20×
Blocking Buffer	5 mL	RTU
Primary Antibody	5 mL	RTU
Secondary Antibody	5 mL	RTU
Chromogen Component A	0.2 mL	RTU
Chromogen Component B	4 mL	RTU
Signal Enhancer	5 mL	RTU
Counter Staining Reagent	5 mL	RTU
Mounting Media	5 mL	RTU
Control Slide	1 slide (Optional)	FFPE
Datasheet	1 Copy	
Manual	1 Copy	

## Storage Instructions

All the reagents are stored at 2-8°C. The kit is stable for 6 months from the date of receipt.

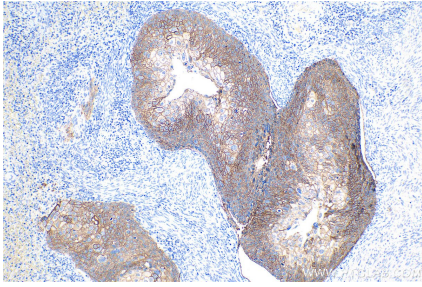
## Background

Tumor-associated calcium signal transducer 2 (TACSTD2), also named as TROP2, is a transmembrane glycoprotein. TROP2 plays a role in transducing intracellular calcium signals. It is expressed in trophoblast cells, cornea and multi-stratified epithelia. TROP2 is overexpressed in most carcinomas and is involved in cancer proliferation, migration, invasion, and metastasis. Congenital mutations of TROP2 cause a rare autosomal recessive disease which may lead to blindness-the gelatinous drop-like corneal disease.

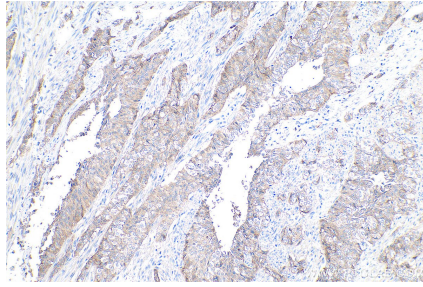
## Synonyms

EGP 1, GA733, GA733 1, M1S1, TACSTD2, TROP2

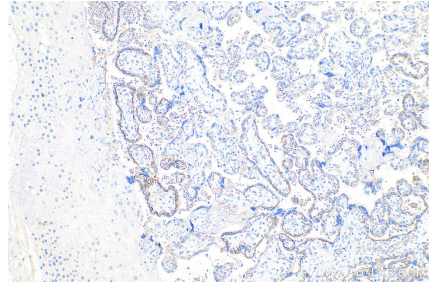
## Selected Validation Data



Immunohistochemical analysis of paraffin-embedded human cervical cancer tissue slide using KHC0821 (TACSTD2 IHC Kit).



Immunohistochemical analysis of paraffin-embedded human urothelial carcinoma tissue slide using KHC0821 (TACSTD2 IHC Kit).



Immunohistochemical analysis of paraffin-embedded human placenta tissue slide using KHC0821 (TACSTD2 IHC Kit).