

IHC*easy* LGALS1 Ready-To-Use IHC Kit

Catalog Number: **KHC0826**

General Information

Sample type:
FFPE tissue

Cited sample type:

Reactivity:
Human

Cited Reactivity:

Assay type:
Immunohistochemistry

Primary antibody type:
Mouse Monoclonal

Secondary antibody type:
Polymer-HRP-Goat anti-Mouse

Kit Component

Component	Size	Concentration
Antigen Retrieval Buffer	100 mL	50×
Washing Buffer	100 mL ×2	20×
Blocking Buffer	5 mL	RTU
Primary Antibody	5 mL	RTU
Secondary Antibody	5 mL	RTU
Chromogen Component A	0.2 mL	RTU
Chromogen Component B	4 mL	RTU
Signal Enhancer	5 mL	RTU
Counter Staining Reagent	5 mL	RTU
Mounting Media	5 mL	RTU
Control Slide	1 slide (Optional)	FFPE
Datasheet	1 Copy	
Manual	1 Copy	

Storage Instructions

All the reagents are stored at 2-8°C. The kit is stable for 6 months from the date of receipt.

Background

Galectins are a family of animal lectins defined by shared characteristic amino-acid sequences and affinity for β -galactose-containing oligosaccharides. Galectin-1 contains one carbohydrate recognition domain (CRD) and occurs as a monomer as well as a non-covalent homodimer. It is differentially expressed by various normal and pathological tissues. Galectin-1 is a multifunctional protein that is involved in cell adhesion, migration, proliferation, apoptosis, inflammation, tumour transformation and growth.

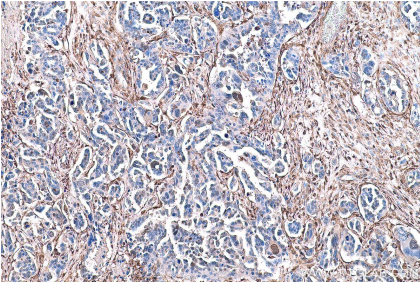
Synonyms

14 kDa laminin binding protein, 14 kDa lectin, Gal 1, GAL1, Galaptin, Galectin 1, Galectin-1, GBP, HBL, HLBP14, HPL, Lactose binding lectin 1, LGALS1, SLac lectin 1

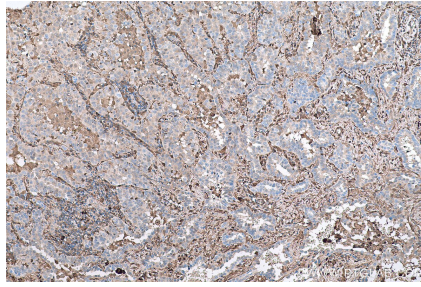
For technical support and original validation data for this product please contact:
T: 1 (888) 4PTGLAB (1-888-478-4522) (toll free in USA), or 1(312) 455-8498 (outside USA)
E: proteintech@ptglab.com
W: ptglab.com

This product is exclusively available under Proteintech Group brand and is not available to purchase from any other manufacturer.

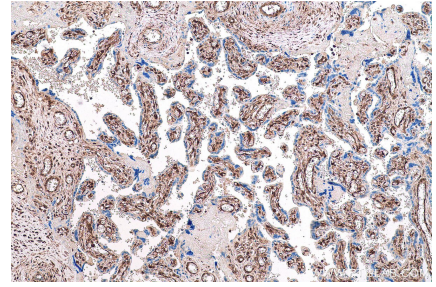
Selected Validation Data



Immunohistochemical analysis of paraffin-embedded human colon cancer tissue slide using KHC0826 (LGALS1 IHC Kit).



Immunohistochemical analysis of paraffin-embedded human lung cancer tissue slide using KHC0826 (LGALS1 IHC Kit).



Immunohistochemical analysis of paraffin-embedded human placenta tissue slide using KHC0826 (LGALS1 IHC Kit).