

# IHC*easy* RPLP1 Ready-To-Use IHC Kit

Catalog Number: **KHC0831**

## General Information

**Sample type:**  
FFPE tissue

**Cited sample type:**

**Reactivity:**  
Human, Mouse, Rat

**Cited Reactivity:**

**Assay type:**  
Immunohistochemistry

**Primary antibody type:**  
Rabbit Polyclonal

**Secondary antibody type:**  
Polymer-HRP-Goat anti-Rabbit

## Kit Component

Component	Size	Concentration
Antigen Retrieval Buffer	100 mL	50×
Washing Buffer	100 mL ×2	20×
Blocking Buffer	5 mL	RTU
Primary Antibody	5 mL	RTU
Secondary Antibody	5 mL	RTU
Chromogen Component A	0.2 mL	RTU
Chromogen Component B	4 mL	RTU
Signal Enhancer	5 mL	RTU
Counter Staining Reagent	5 mL	RTU
Mounting Media	5 mL	RTU
Control Slide	1 slide (Optional)	FFPE
Datasheet	1 Copy	
Manual	1 Copy	

## Storage Instructions

All the reagents are stored at 2-8°C. The kit is stable for 6 months from the date of receipt.

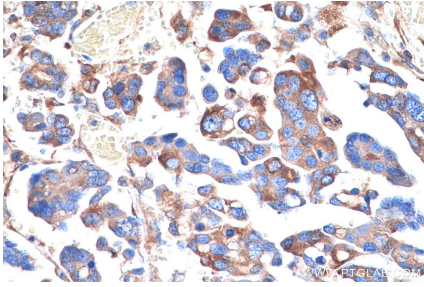
## Background

60S acidic ribosomal protein P1 (RRLP1) is a 114 amino acid protein, which belongs to the ribosomal protein L12P family. RRLP1 plays an important role in the elongation step of protein synthesis.

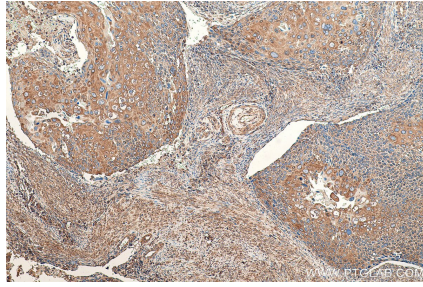
## Synonyms

P1, ribosomal protein, large, P1, RPLP1, RPP1, RRP1

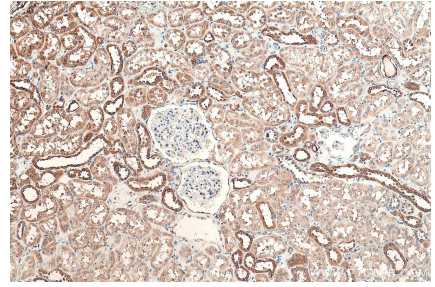
## Selected Validation Data



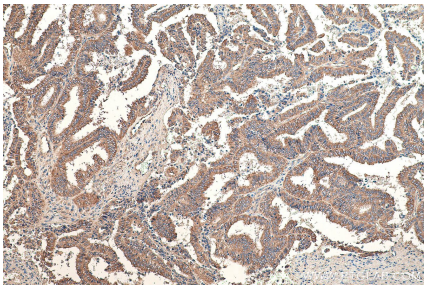
Immunohistochemical analysis of paraffin-embedded human colon cancer tissue slide using KHC0831 (RPLP1 IHC Kit).



Immunohistochemical analysis of paraffin-embedded human cervical cancer tissue slide using KHC0831 (RPLP1 IHC Kit).



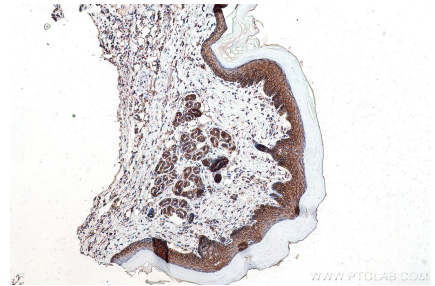
Immunohistochemical analysis of paraffin-embedded human kidney tissue slide using KHC0831 (RPLP1 IHC Kit).



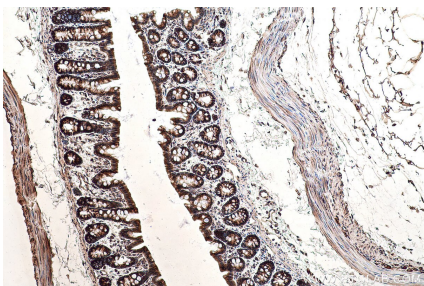
Immunohistochemical analysis of paraffin-embedded human ovary tumor tissue slide using KHC0831 (RPLP1 IHC Kit).



Immunohistochemical analysis of paraffin-embedded mouse colon tissue slide using KHC0831 (RPLP1 IHC Kit).



Immunohistochemical analysis of paraffin-embedded mouse skin tissue slide using KHC0831 (RPLP1 IHC Kit).



Immunohistochemical analysis of paraffin-embedded rat colon tissue slide using KHC0831 (RPLP1 IHC Kit).