

IHC*easy* SNU13/NHP2L1 Ready-To-Use IHC Kit

Catalog Number: **KHC0847**

General Information

Sample type:
FFPE tissue

Cited sample type:

Reactivity:
Human, Mouse, Rat

Cited Reactivity:

Assay type:
Immunohistochemistry

Primary antibody type:
Rabbit Polyclonal

Secondary antibody type:
Polymer-HRP-Goat anti-Rabbit

Kit Component

Component	Size	Concentration
Antigen Retrieval Buffer	100 mL	50×
Washing Buffer	100 mL ×2	20×
Blocking Buffer	5 mL	RTU
Primary Antibody	5 mL	RTU
Secondary Antibody	5 mL	RTU
Chromogen Component A	0.2 mL	RTU
Chromogen Component B	4 mL	RTU
Signal Enhancer	5 mL	RTU
Counter Staining Reagent	5 mL	RTU
Mounting Media	5 mL	RTU
Control Slide	1 slide (Optional)	FFPE
Datasheet	1 Copy	
Manual	1 Copy	

Storage Instructions

All the reagents are stored at 2-8°C. The kit is stable for 6 months from the date of receipt.

Background

NHP2L1, belongs to the ribosomal protein L7Ae family, is a component of the spliceosome complex. It is recruited to introns following the attachment of U4 and U6 RNAs, and is required for subsequent recruitment of PRP31 and activation of the spliceosomal complex. It binds to the 5'-stem-loop of U4 snRNA and may have a role in the late stage of spliceosome assembly. The protein undergoes a conformational change upon RNA-binding.

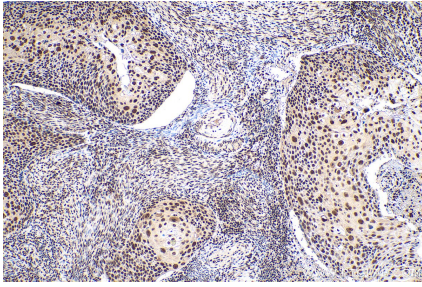
Synonyms

15.5K, FA 1, FA1, hSNU13, NHP2 like protein 1, NHP2L1, NHPX, OTK27, SNRNP15 5, SNU13, SNU13 homolog, SPAG12, SSFA1

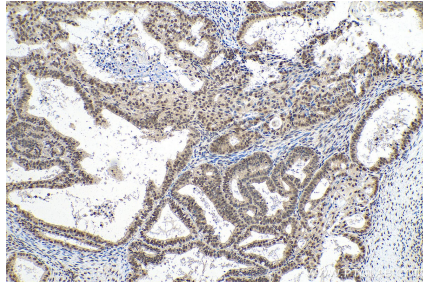
For technical support and original validation data for this product please contact:
T: 1 (888) 4PTGLAB (1-888-478-4522) (toll free in USA), or 1(312) 455-8498 (outside USA)
E: proteintech@ptglab.com
W: ptglab.com

This product is exclusively available under Proteintech Group brand and is not available to purchase from any other manufacturer.

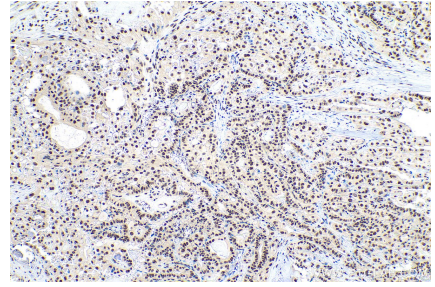
Selected Validation Data



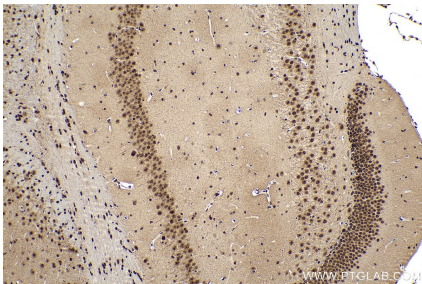
Immunohistochemical analysis of paraffin-embedded human cervical cancer tissue slide using KHC0847 (SNU13/NHP2L1 IHC Kit).



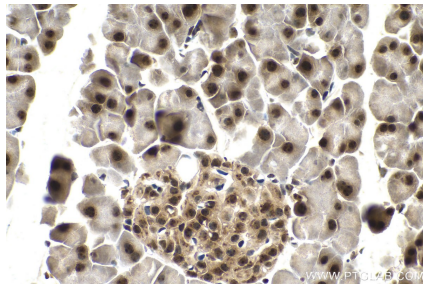
Immunohistochemical analysis of paraffin-embedded human ovary tumor tissue slide using KHC0847 (SNU13/NHP2L1 IHC Kit).



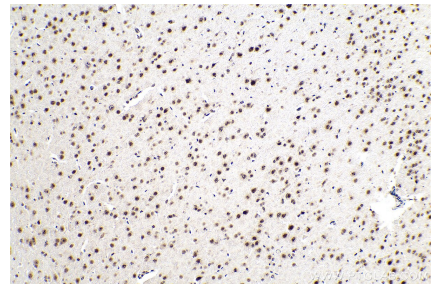
Immunohistochemical analysis of paraffin-embedded human thyroid cancer tissue slide using KHC0847 (SNU13/NHP2L1 IHC Kit).



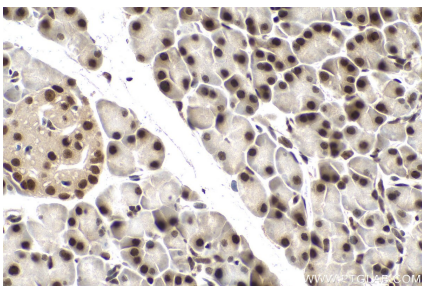
Immunohistochemical analysis of paraffin-embedded mouse brain tissue slide using KHC0847 (SNU13/NHP2L1 IHC Kit).



Immunohistochemical analysis of paraffin-embedded mouse pancreas tissue slide using KHC0847 (SNU13/NHP2L1 IHC Kit).



Immunohistochemical analysis of paraffin-embedded rat brain tissue slide using KHC0847 (SNU13/NHP2L1 IHC Kit).



Immunohistochemical analysis of paraffin-embedded rat pancreas tissue slide using KHC0847 (SNU13/NHP2L1 IHC Kit).