

IHC*easy* PSMD5 Ready-To-Use IHC Kit

Catalog Number: **KHC0858**

General Information

Sample type:
FFPE tissue

Cited sample type:

Reactivity:
Human, Mouse, Rat

Cited Reactivity:

Assay type:
Immunohistochemistry

Primary antibody type:
Rabbit Polyclonal

Secondary antibody type:
Polymer-HRP-Goat anti-Rabbit

Kit Component

Component	Size	Concentration
Antigen Retrieval Buffer	100 mL	50×
Washing Buffer	100 mL ×2	20×
Blocking Buffer	5 mL	RTU
Primary Antibody	5 mL	RTU
Secondary Antibody	5 mL	RTU
Chromogen Component A	0.2 mL	RTU
Chromogen Component B	4 mL	RTU
Signal Enhancer	5 mL	RTU
Counter Staining Reagent	5 mL	RTU
Mounting Media	5 mL	RTU
Control Slide	1 slide (Optional)	FFPE
Datasheet	1 Copy	
Manual	1 Copy	

Storage Instructions

All the reagents are stored at 2-8°C. The kit is stable for 6 months from the date of receipt.

Background

PSMD5, also named as KIAA0072, belongs to the proteasome subunit S5B/HSM3 family. It acts as a chaperone during the assembly of the 26S proteasome, specifically of the base subcomplex of the PA700/19S regulatory complex (RC). In the initial step of the base subcomplex assembly, it is part of an intermediate PSMD5:PSMC2:PSMC1:PSMD2 module which probably assembles with a SMD10:PSMC4:PSMC5:PAAF1 module followed by dissociation of PSMD5.

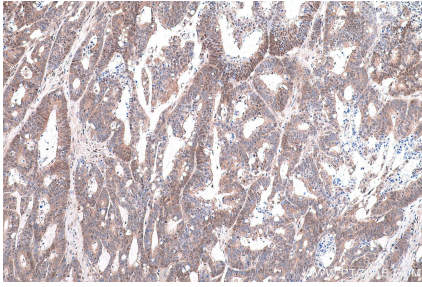
Synonyms

26S protease subunit S5 basic, 26S proteasome subunit S5B, KIAA0072, PSMD5, S5B

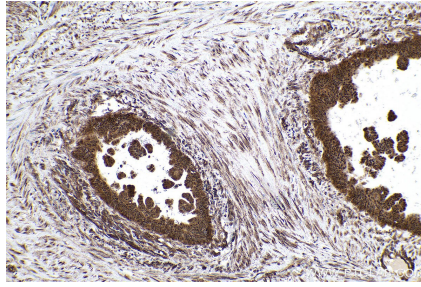
For technical support and original validation data for this product please contact:
T: 1 (888) 4PTGLAB (1-888-478-4522) (toll free in USA), or 1(312) 455-8498 (outside USA)
E: proteintech@ptglab.com
W: ptglab.com

This product is exclusively available under Proteintech Group brand and is not available to purchase from any other manufacturer.

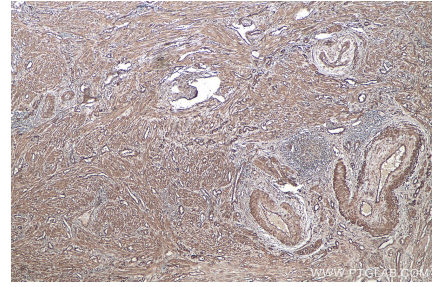
Selected Validation Data



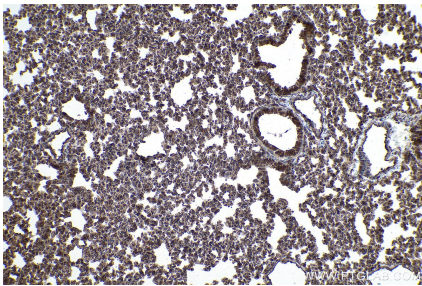
Immunohistochemical analysis of paraffin-embedded human colon cancer tissue slide using KHC0858 (PSMD5 IHC Kit).



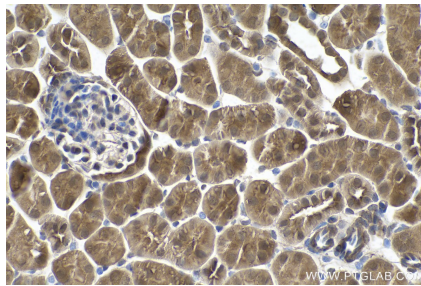
Immunohistochemical analysis of paraffin-embedded human urothelial carcinoma tissue slide using KHC0858 (PSMD5 IHC Kit).



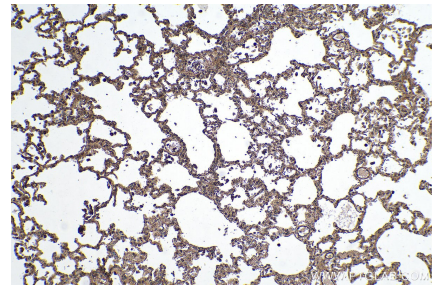
Immunohistochemical analysis of paraffin-embedded human endometrial cancer tissue slide using KHC0858 (PSMD5 IHC Kit).



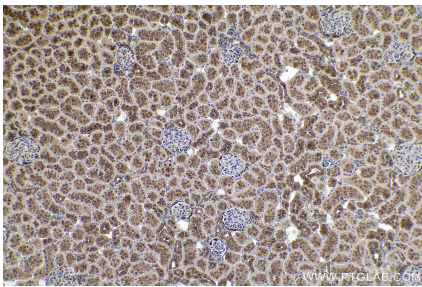
Immunohistochemical analysis of paraffin-embedded mouse lung tissue slide using KHC0858 (PSMD5 IHC Kit).



Immunohistochemical analysis of paraffin-embedded mouse kidney tissue slide using KHC0858 (PSMD5 IHC Kit).



Immunohistochemical analysis of paraffin-embedded rat lung tissue slide using KHC0858 (PSMD5 IHC Kit).



Immunohistochemical analysis of paraffin-embedded rat kidney tissue slide using KHC0858 (PSMD5 IHC Kit).