

IHC*easy* RTRAF/C14orf166 Ready-To-Use IHC Kit

Catalog Number: **KHC0899**

General Information

Sample type:
FFPE tissue
Cited sample type:
Reactivity:
Human
Cited Reactivity:

Assay type:
Immunohistochemistry
Primary antibody type:
Rabbit Polyclonal
Secondary antibody type:
Polymer-HRP-Goat anti-Rabbit

Kit Component

Component	Size	Concentration
Antigen Retrieval Buffer	100 mL	50×
Washing Buffer	100 mL ×2	20×
Blocking Buffer	5 mL	RTU
Primary Antibody	5 mL	RTU
Secondary Antibody	5 mL	RTU
Chromogen Component A	0.2 mL	RTU
Chromogen Component B	4 mL	RTU
Signal Enhancer	5 mL	RTU
Counter Staining Reagent	5 mL	RTU
Mounting Media	5 mL	RTU
Control Slide	1 slide (Optional)	FFPE
Datasheet	1 Copy	
Manual	1 Copy	

Storage Instructions

All the reagents are stored at 2-8°C. The kit is stable for 6 months from the date of receipt.

Background

Human CLE/C14orf166 protein is a positive modulator of cellular RNA polymerase. CLE is also shown to interact with the influenza virus polymerase complex and colocalizes with viral ribonucleoproteins, and is required for viral replication. Similarly, CLE is identified as a novel host interacting partners of the mature hepatitis C virus core protein. CLE levels were significantly higher in the serum of patients with PaCa compared with the control group was strongly expressed in tumor cells, suggesting that C14orf166 may be a potential biomarker of pancreatic adenocarcinoma.

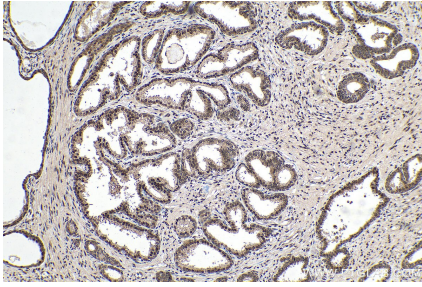
Synonyms

C14orf166, CGI 99, CGI99, CLE, CLE7, LCRP369, RLLM1, RTRAF, UPF0568 protein C14orf166

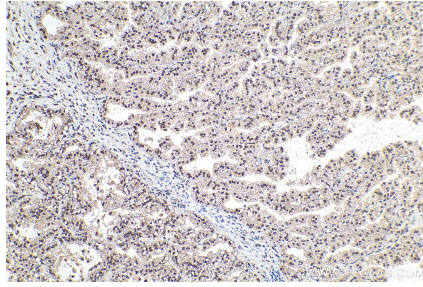
For technical support and original validation data for this product please contact:
T: 1 (888) 4PTGLAB (1-888-478-4522) (toll free in USA), or 1(312) 455-8498 (outside USA)
E: proteintech@ptglab.com
W: ptglab.com

This product is exclusively available under Proteintech Group brand and is not available to purchase from any other manufacturer.

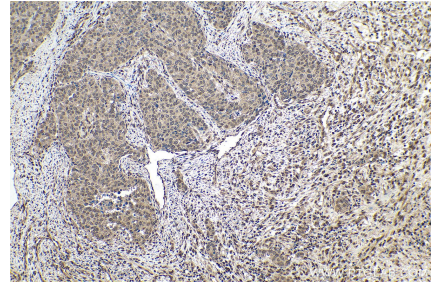
Selected Validation Data



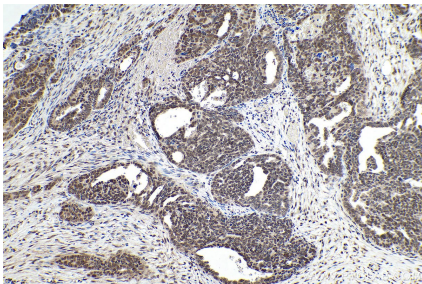
Immunohistochemical analysis of paraffin-embedded human prostate cancer tissue slide using KHC0899 (RTRAF/C14orf166 IHC Kit).



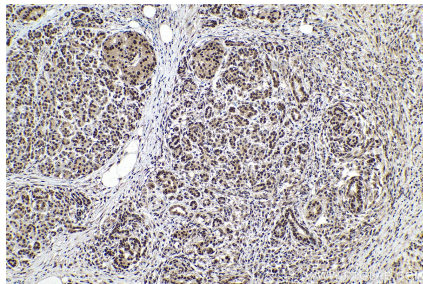
Immunohistochemical analysis of paraffin-embedded human lung cancer tissue slide using KHC0899 (RTRAF/C14orf166 IHC Kit).



Immunohistochemical analysis of paraffin-embedded human stomach cancer tissue slide using KHC0899 (RTRAF/C14orf166 IHC Kit).



Immunohistochemical analysis of paraffin-embedded human ovary tumor tissue slide using KHC0899 (RTRAF/C14orf166 IHC Kit).



Immunohistochemical analysis of paraffin-embedded human pancreas cancer tissue slide using KHC0899 (RTRAF/C14orf166 IHC Kit).