

IHC*easy* DDX5 Ready-To-Use IHC Kit

Catalog Number: **KHC0913**

General Information

Sample type:
FFPE tissue

Cited sample type:

Reactivity:
Human, Mouse, Rat

Cited Reactivity:

Assay type:
Immunohistochemistry

Primary antibody type:
Rabbit Polyclonal

Secondary antibody type:
Polymer-HRP-Goat anti-Rabbit

Kit Component

Component	Size	Concentration
Antigen Retrieval Buffer	100 mL	50×
Washing Buffer	100 mL ×2	20×
Blocking Buffer	5 mL	RTU
Primary Antibody	5 mL	RTU
Secondary Antibody	5 mL	RTU
Chromogen Component A	0.2 mL	RTU
Chromogen Component B	4 mL	RTU
Signal Enhancer	5 mL	RTU
Counter Staining Reagent	5 mL	RTU
Mounting Media	5 mL	RTU
Control Slide	1 slide (Optional)	FFPE
Datasheet	1 Copy	
Manual	1 Copy	

Storage Instructions

All the reagents are stored at 2-8°C. The kit is stable for 6 months from the date of receipt.

Background

DDX5 or p68, a member of DEAD/H BOX, which has a characteristic DEAD box, is a proliferation-associated nuclear antigen. DDX5 involves in the alternative regulation of pre-mRNA splicing, act as a RNA helicase to increase tau exon10 inclusion in a RBM4-dependent manner. It's also a transcription coactivator for estrogen receptor ESR1 and androgen receptor AR. Once synergized with DDX17 and SRA1 RNA, DDX5 activated MYOD1 transcription activity and involved in skeletal muscle differentiation.

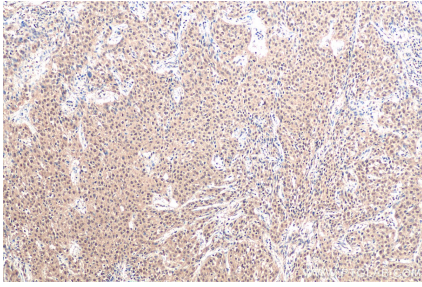
Synonyms

DDX5, DEAD box protein 5, G17P1, HELR, HLR1, HUMP68, p68, RNA helicase p68

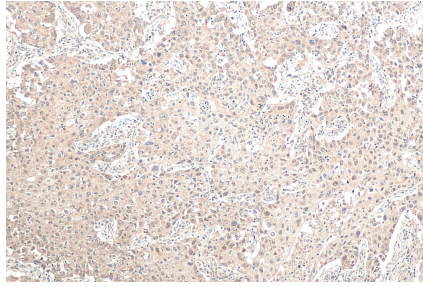
For technical support and original validation data for this product please contact:
T: 1 (888) 4PTGLAB (1-888-478-4522) (toll free in USA), or 1(312) 455-8498 (outside USA)
E: proteintech@ptglab.com
W: ptglab.com

This product is exclusively available under Proteintech Group brand and is not available to purchase from any other manufacturer.

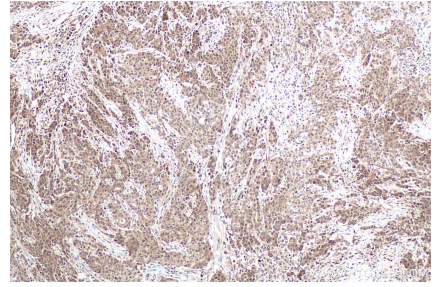
Selected Validation Data



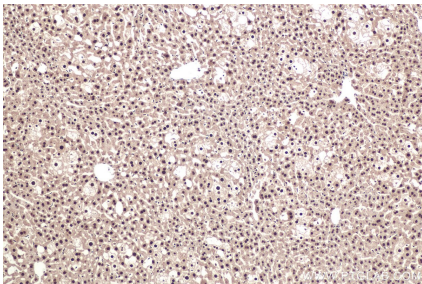
Immunohistochemical analysis of paraffin-embedded human cervical cancer tissue slide using KHC0913 (DDX5 IHC Kit).



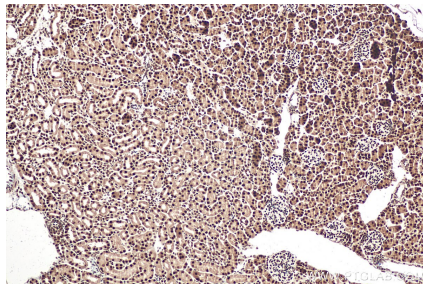
Immunohistochemical analysis of paraffin-embedded human lung cancer tissue slide using KHC0913 (DDX5 IHC Kit).



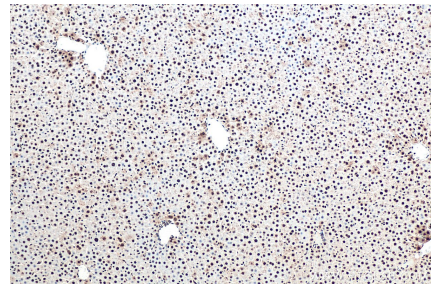
Immunohistochemical analysis of paraffin-embedded human stomach cancer tissue slide using KHC0913 (DDX5 IHC Kit).



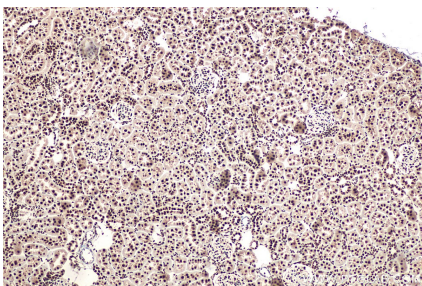
Immunohistochemical analysis of paraffin-embedded mouse liver tissue slide using KHC0913 (DDX5 IHC Kit).



Immunohistochemical analysis of paraffin-embedded mouse kidney tissue slide using KHC0913 (DDX5 IHC Kit).



Immunohistochemical analysis of paraffin-embedded rat liver tissue slide using KHC0913 (DDX5 IHC Kit).



Immunohistochemical analysis of paraffin-embedded rat kidney tissue slide using KHC0913 (DDX5 IHC Kit).