

IHC*easy* DDX39A Ready-To-Use IHC Kit

Catalog Number: **KHC0928**

General Information

Sample type:
FFPE tissue

Cited sample type:

Reactivity:
Human, Mouse

Cited Reactivity:

Assay type:
Immunohistochemistry

Primary antibody type:
Rabbit Polyclonal

Secondary antibody type:
Polymer-HRP-Goat anti-Rabbit

Kit Component

Component	Size	Concentration
Antigen Retrieval Buffer	100 mL	50×
Washing Buffer	100 mL ×2	20×
Blocking Buffer	5 mL	RTU
Primary Antibody	5 mL	RTU
Secondary Antibody	5 mL	RTU
Chromogen Component A	0.2 mL	RTU
Chromogen Component B	4 mL	RTU
Signal Enhancer	5 mL	RTU
Counter Staining Reagent	5 mL	RTU
Mounting Media	5 mL	RTU
Control Slide	1 slide (Optional)	FFPE
Datasheet	1 Copy	
Manual	1 Copy	

Storage Instructions

All the reagents are stored at 2-8°C. The kit is stable for 6 months from the date of receipt.

Background

DDX39A, also named the BAT1 protein, contains the nine conserved motifs that characterize the DEAD-box family of RNA binding proteins. The family includes proteins found in all eukaryotic cell types, with considerable divergence in the sequences lying between the conserved motifs. Some of the motifs were known prior to the definition of the family and are responsible for binding to mRNA or ATP, or possess ATPase activity. Phylogenetic analyses have grouped BAT1 with the defining member of the DEAD-box family, eIF-4. This is a translation initiation factor required for the dissociation of stem/loop structures in mRNA at the ribosomes. Primary antibody in this kit may cross-react with DDX39B.

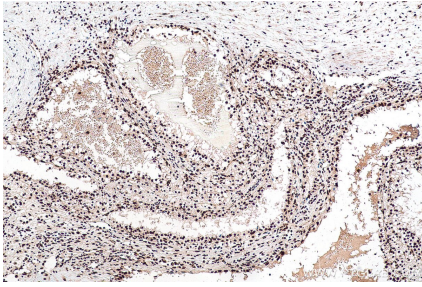
Synonyms

BAT1, BAT1L, DDX39, DDX39A, DDXL, DEAD box protein 39, Nuclear RNA helicase URH49, URH49

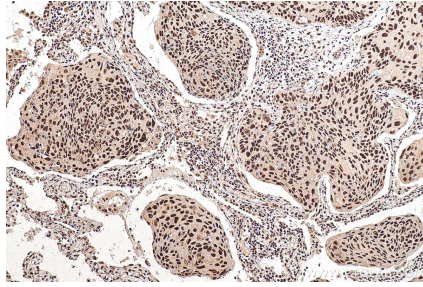
For technical support and original validation data for this product please contact:
T: 1 (888) 4PTGLAB (1-888-478-4522) (toll free in USA), or 1(312) 455-8498 (outside USA)
E: proteintech@ptglab.com
W: ptglab.com

This product is exclusively available under Proteintech Group brand and is not available to purchase from any other manufacturer.

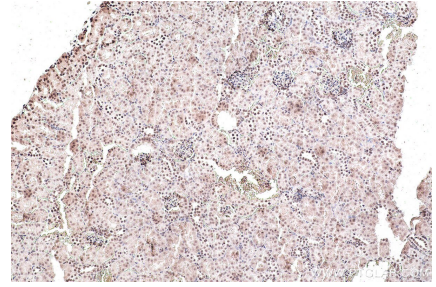
Selected Validation Data



Immunohistochemical analysis of paraffin-embedded human renal cell carcinoma tissue slide using KHC0928 (DDX39A IHC Kit).



Immunohistochemical analysis of paraffin-embedded human lung cancer tissue slide using KHC0928 (DDX39A IHC Kit).



Immunohistochemical analysis of paraffin-embedded mouse kidney tissue slide using KHC0928 (DDX39A IHC Kit).