

IHC*easy* TOLLIP Ready-To-Use IHC Kit

Catalog Number: **KHC0972**

General Information

Sample type:
FFPE tissue

Cited sample type:

Reactivity:
Human, Mouse, Rat

Cited Reactivity:

Assay type:
Immunohistochemistry

Primary antibody type:
Rabbit Polyclonal

Secondary antibody type:
Polymer-HRP-Goat anti-Rabbit

Kit Component

Component	Size	Concentration
Antigen Retrieval Buffer	100 mL	50×
Washing Buffer	100 mL ×2	20×
Blocking Buffer	5 mL	RTU
Primary Antibody	5 mL	RTU
Secondary Antibody	5 mL	RTU
Chromogen Component A	0.2 mL	RTU
Chromogen Component B	4 mL	RTU
Signal Enhancer	5 mL	RTU
Counter Staining Reagent	5 mL	RTU
Mounting Media	5 mL	RTU
Control Slide	1 slide (Optional)	FFPE
Datasheet	1 Copy	
Manual	1 Copy	

Storage Instructions

All the reagents are stored at 2-8°C. The kit is stable for 6 months from the date of receipt.

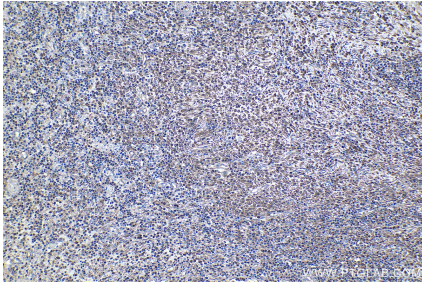
Background

TOLLIP (Toll interacting protein), is an inhibitory adaptor protein. Tollip is a negative regulator of IL-1R and Toll-like receptors signalling pathway, involved in inflammatory immune response and inhibiting IRAK1 phosphorylation and kinase activity. The TOLLIP-dependent selective autophagy pathway plays a role in clearance of cytotoxic polyQ proteins aggregates.

Synonyms

IL 1RAcPIP, toll interacting protein, TOLLIP

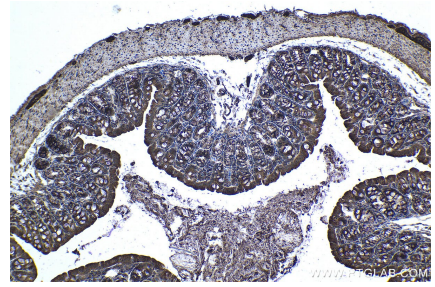
Selected Validation Data



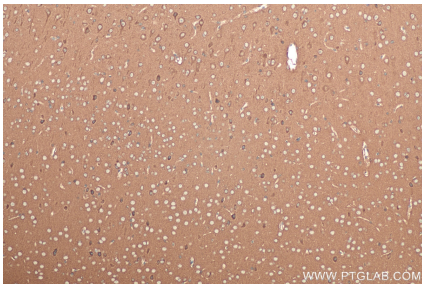
Immunohistochemical analysis of paraffin-embedded human colon cancer tissue slide using KHC0972 (TOLLIP IHC Kit).



Immunohistochemical analysis of paraffin-embedded rat colon tissue slide using KHC0972 (TOLLIP IHC Kit).



Immunohistochemical analysis of paraffin-embedded mouse colon tissue slide using KHC0972 (TOLLIP IHC Kit).



Immunohistochemical analysis of paraffin-embedded mouse brain tissue slide using KHC0972 (TOLLIP IHC Kit).