

IHC*easy* ARPP19 Ready-To-Use IHC Kit

Catalog Number: **KHC1039**

General Information

Sample type:
FFPE tissue
Cited sample type:
Reactivity:
Human
Cited Reactivity:

Assay type:
Immunohistochemistry
Primary antibody type:
Rabbit Polyclonal
Secondary antibody type:
Polymer-HRP-Goat anti-Rabbit

Kit Component

Component	Size	Concentration
Antigen Retrieval Buffer	100 mL	50×
Washing Buffer	100 mL ×2	20×
Blocking Buffer	5 mL	RTU
Primary Antibody	5 mL	RTU
Secondary Antibody	5 mL	RTU
Chromogen Component A	0.2 mL	RTU
Chromogen Component B	4 mL	RTU
Signal Enhancer	5 mL	RTU
Counter Staining Reagent	5 mL	RTU
Mounting Media	5 mL	RTU
Control Slide	1 slide (Optional)	FFPE
Datasheet	1 Copy	
Manual	1 Copy	

Storage Instructions

All the reagents are stored at 2-8°C. The kit is stable for 6 months from the date of receipt.

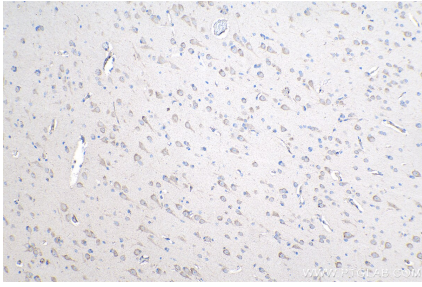
Background

ARPP19, a 19-kDa cAMP-regulated phosphoprotein, plays a role in regulating mitosis. Initiation and maintenance of mitosis require the activation of protein kinase cyclin B-Cdc2 and the inhibition of protein phosphatase 2A (PP2A). When phosphorylated by protein kinase Greatwall (Gwl), ARPP19 associate with and inhibit PP2A, thus promoting mitotic entry. ARPP19 may be an important link between nerve growth factor (NGF) signaling and post-transcriptional control of neuronal gene expression such as GAP43.

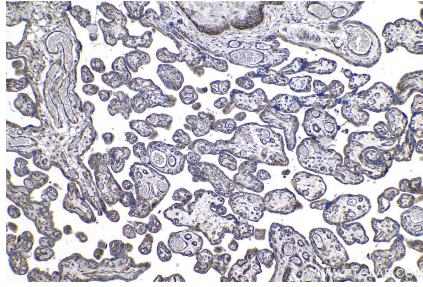
Synonyms

ARPP 16, ARPP 19, ARPP16, ARPP19, ARPP-19

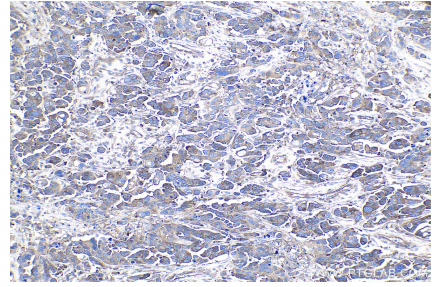
Selected Validation Data



Immunohistochemical analysis of paraffin-embedded human gliomas tissue slide using KHC1039 (ARPP19 IHC Kit).



Immunohistochemical analysis of paraffin-embedded human placenta tissue slide using KHC1039 (ARPP19 IHC Kit).



Immunohistochemical analysis of paraffin-embedded human colon cancer tissue slide using KHC1039 (ARPP19 IHC Kit).