

IHC*easy* IGFBP1 Ready-To-Use IHC Kit

Catalog Number: **KHC1088**

General Information

Sample type:
FFPE tissue

Cited sample type:

Reactivity:
Human

Cited Reactivity:

Assay type:
Immunohistochemistry

Primary antibody type:
Rabbit Polyclonal

Secondary antibody type:
Polymer-HRP-Goat anti-Rabbit

Kit Component

Component	Size	Concentration
Antigen Retrieval Buffer	100 mL	50×
Washing Buffer	100 mL ×2	20×
Blocking Buffer	5 mL	RTU
Primary Antibody	5 mL	RTU
Secondary Antibody	5 mL	RTU
Chromogen Component A	0.2 mL	RTU
Chromogen Component B	4 mL	RTU
Signal Enhancer	5 mL	RTU
Counter Staining Reagent	5 mL	RTU
Mounting Media	5 mL	RTU
Control Slide	1 slide (Optional)	FFPE
Datasheet	1 Copy	
Manual	1 Copy	

Storage Instructions

All the reagents are stored at 2-8°C. The kit is stable for 6 months from the date of receipt.

Background

IGF-binding proteins (IGFBPs) family contains members like IGFBP-1, -2, -3, -4, -5 and -6. IGFBPs prolong the half-life of the IGFs and have been shown to either inhibit or stimulate the growth promoting effects of the IGFs on cell culture. They alter the interaction of IGFs with their cell surface receptors. IGF-I physically interacts with IGFBP-1 and that IGFBP-1 also binds to an integrin receptor, but the effect of IGFBP-1 on cell migration may be independent of IGF-I and is probably mediated through the alpha 5 beta 1 integrin. Transgenic mice models demonstrated that IGFBPs played important roles in the pathogenesis of obesity and INS resistance. Studies conducted in humans demonstrated the close relation between IGFBPs and the components of the metabolic syndrome.

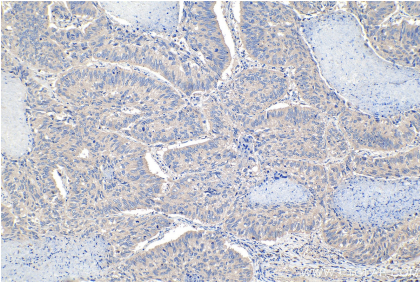
Synonyms

AFBP, hIGFBP 1, IBP 1, IBP1, IGF binding protein 1, IGF BP25, IGFBP 1, IGFBP1, Placental protein 12, PP12

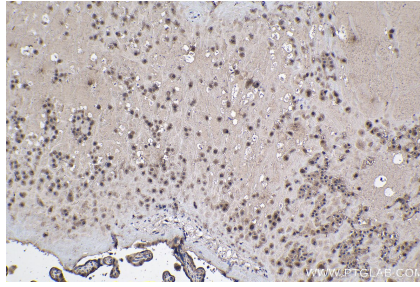
For technical support and original validation data for this product please contact:
T: 1 (888) 4PTGLAB (1-888-478-4522) (toll free in USA), or 1(312) 455-8498 (outside USA)
E: proteintech@ptglab.com
W: ptglab.com

This product is exclusively available under Proteintech Group brand and is not available to purchase from any other manufacturer.

Selected Validation Data



Immunohistochemical analysis of paraffin-embedded human lung cancer tissue slide using KHC1088 (IGFBP1 IHC Kit).



Immunohistochemical analysis of paraffin-embedded human placenta tissue slide using KHC1088 (IGFBP1 IHC Kit).