

IHC*easy* LPCAT1 Ready-To-Use IHC Kit

Catalog Number: **KHC1097**

General Information

Sample type:
FFPE tissue

Cited sample type:

Reactivity:
Human, Mouse, Rat

Cited Reactivity:

Assay type:
Immunohistochemistry

Primary antibody type:
Mouse Monoclonal

Secondary antibody type:
Polymer-HRP-Goat anti-Mouse

Kit Component

Component	Size	Concentration
Antigen Retrieval Buffer	100 mL	50×
Washing Buffer	100 mL × 2	20×
Blocking Buffer	5 mL	RTU
Primary Antibody	5 mL	RTU
Secondary Antibody	5 mL	RTU
Chromogen Component A	0.2 mL	RTU
Chromogen Component B	4 mL	RTU
Signal Enhancer	5 mL	RTU
Counter Staining Reagent	5 mL	RTU
Mounting Media	5 mL	RTU
Control Slide	1 slide (Optional)	FFPE
Datasheet	1 Copy	
Manual	1 Copy	

Storage Instructions

All the reagents are stored at 2-8°C. The kit is stable for 6 months from the date of receipt.

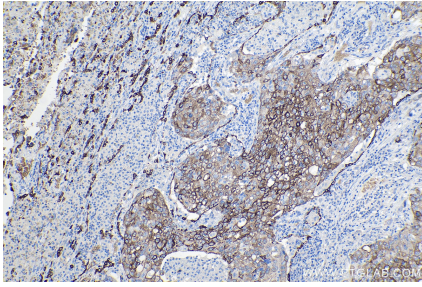
Background

LPCAT1, also named as AYTL2, PFAAP3 and LysoPAFAT, belongs to the 1-acyl-sn-glycerol-3-phosphate acyltransferase family. It is a key enzyme for remodeling phospholipids, including phosphatidylcholine. The expression level of LPCAT1 is able to differentiate prostate cancer from noncancerous prostatic changes, and correlates to the tumor grade of prostate cancer. LPCAT1 possesses both acyltransferase and acetyltransferase activities. It mediates the conversion of 1-acyl-sn-glycero-3-phosphocholine (LPC) into phosphatidylcholine (PC).

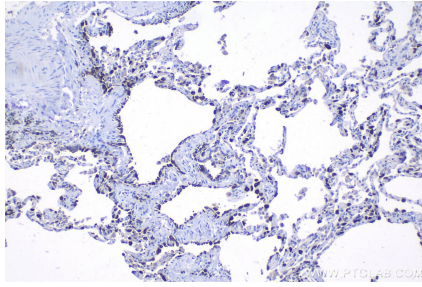
Synonyms

Acyltransferase like 2, AYTL2, LPC acyltransferase 1, lpcat, LPCAT 1, LPCAT1, Lyso PAF acetyltransferase, LysoPAFAT, LysoPC acyltransferase 1, PFAAP3

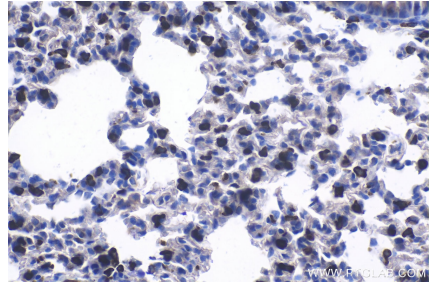
Selected Validation Data



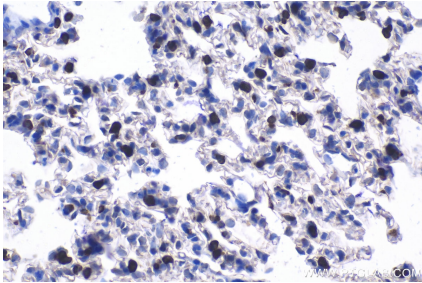
Immunohistochemical analysis of paraffin-embedded human lung cancer tissue slide using KHC1097 (LPCAT1 IHC Kit).



Immunohistochemical analysis of paraffin-embedded human lung tissue slide using KHC1097 (LPCAT1 IHC Kit).



Immunohistochemical analysis of paraffin-embedded mouse lung tissue slide using KHC1097 (LPCAT1 IHC Kit).



Immunohistochemical analysis of paraffin-embedded rat lung tissue slide using KHC1097 (LPCAT1 IHC Kit).