

IHC*easy* MSMB Ready-To-Use IHC Kit

Catalog Number: **KHC1106**

General Information

Sample type:
FFPE tissue
Cited sample type:
Reactivity:
Human
Cited Reactivity:

Assay type:
Immunohistochemistry
Primary antibody type:
Rabbit Polyclonal
Secondary antibody type:
Polymer-HRP-Goat anti-Rabbit

Kit Component

Component	Size	Concentration
Antigen Retrieval Buffer	100 mL	50×
Washing Buffer	100 mL ×2	20×
Blocking Buffer	5 mL	RTU
Primary Antibody	5 mL	RTU
Secondary Antibody	5 mL	RTU
Chromogen Component A	0.2 mL	RTU
Chromogen Component B	4 mL	RTU
Signal Enhancer	5 mL	RTU
Counter Staining Reagent	5 mL	RTU
Mounting Media	5 mL	RTU
Control Slide	1 slide (Optional)	FFPE
Datasheet	1 Copy	
Manual	1 Copy	

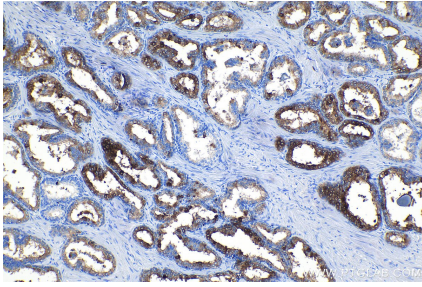
Storage Instructions

All the reagents are stored at 2-8°C. The kit is stable for 6 months from the date of receipt.

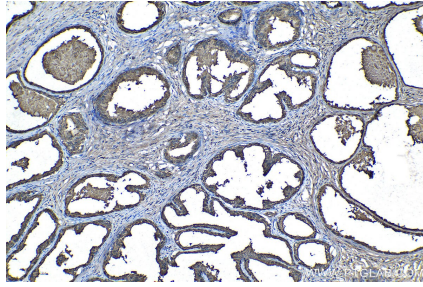
Synonyms

Beta microseminoprotein, HPC13, IGBF, Immunoglobulin binding factor, microseminoprotein, beta, MSMB, MSP, MSPB, PN44, PRPS, PRSP, PSP, PSP 94, PSP94, Seminal plasma beta inhibin

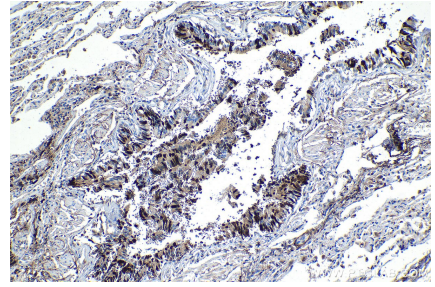
Selected Validation Data



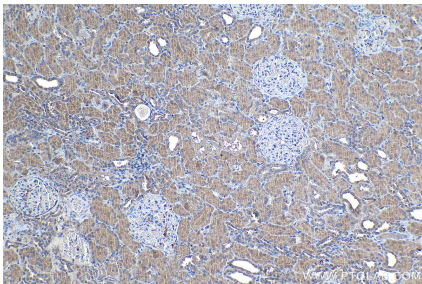
Immunohistochemical analysis of paraffin-embedded human prostate hyperplasia tissue slide using KHC1106 (MSMB IHC Kit).



Immunohistochemical analysis of paraffin-embedded human prostate cancer tissue slide using KHC1106 (MSMB IHC Kit).



Immunohistochemical analysis of paraffin-embedded human lung tissue slide using KHC1106 (MSMB IHC Kit).



Immunohistochemical analysis of paraffin-embedded human kidney tissue slide using KHC1106 (MSMB IHC Kit).