

IHC*easy* ELAC2 Ready-To-Use IHC Kit

Catalog Number: **KHC1107**

General Information

Sample type:
FFPE tissue

Cited sample type:

Reactivity:
Human, Mouse, Rat

Cited Reactivity:

Assay type:
Immunohistochemistry

Primary antibody type:
Rabbit Polyclonal

Secondary antibody type:
Polymer-HRP-Goat anti-Rabbit

Kit Component

| Component | Size | Concentration |
|--------------------------|--------------------|---------------|
| Antigen Retrieval Buffer | 100 mL | 50× |
| Washing Buffer | 100 mL ×2 | 20× |
| Blocking Buffer | 5 mL | RTU |
| Primary Antibody | 5 mL | RTU |
| Secondary Antibody | 5 mL | RTU |
| Chromogen Component A | 0.2 mL | RTU |
| Chromogen Component B | 4 mL | RTU |
| Signal Enhancer | 5 mL | RTU |
| Counter Staining Reagent | 5 mL | RTU |
| Mounting Media | 5 mL | RTU |
| Control Slide | 1 slide (Optional) | FFPE |
| Datasheet | 1 Copy | |
| Manual | 1 Copy | |

Storage Instructions

All the reagents are stored at 2-8°C. The kit is stable for 6 months from the date of receipt.

Background

Putative prostate cancer susceptibility protein (ELAC2) is encoded by HPC2/ELAC2 gene. HPC2 is a potential prostate cancer predisposition gene playing a role in genetic susceptibility to prostate cancer. It is a zinc phosphodiesterase, which displays some tRNA 3'-processing endonuclease activity and probably involved in tRNA maturation, by removing a 3'-trailer from precursor tRNA. Defects in ELAC2 may be a cause of susceptibility to prostate cancer (PC).

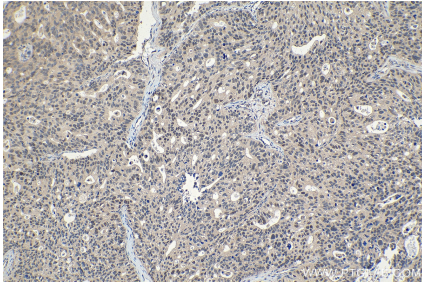
Synonyms

elaC homolog 2 (E. coli), ElaC homolog protein 2, ELAC2, ELC2, HPC2, Ribonuclease Z 2, RNase Z 2, tRNA 3 endonuclease 2, tRNase Z 2

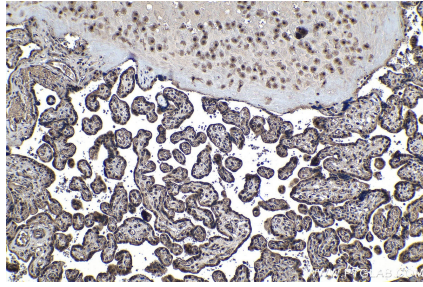
For technical support and original validation data for this product please contact:
T: 1 (888) 4PTGLAB (1-888-478-4522) (toll free in USA), or 1(312) 455-8498 (outside USA)
E: proteintech@ptglab.com
W: ptglab.com

This product is exclusively available under Proteintech Group brand and is not available to purchase from any other manufacturer.

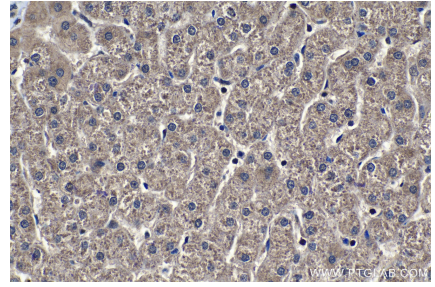
Selected Validation Data



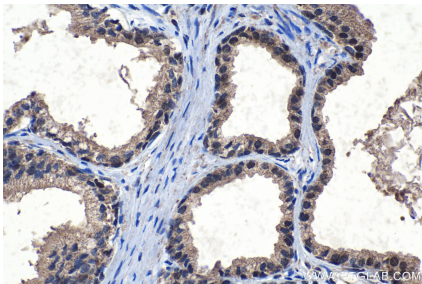
Immunohistochemical analysis of paraffin-embedded human ovary tumor tissue slide using KHC1107 (ELAC2 IHC Kit).



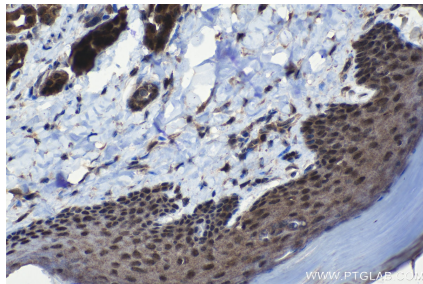
Immunohistochemical analysis of paraffin-embedded human placenta tissue slide using KHC1107 (ELAC2 IHC Kit).



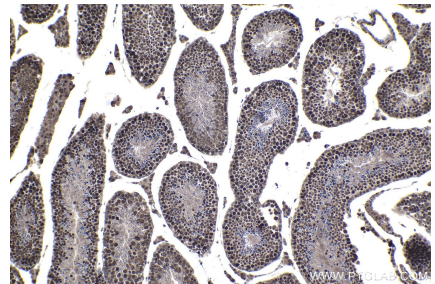
Immunohistochemical analysis of paraffin-embedded human liver tissue slide using KHC1107 (ELAC2 IHC Kit).



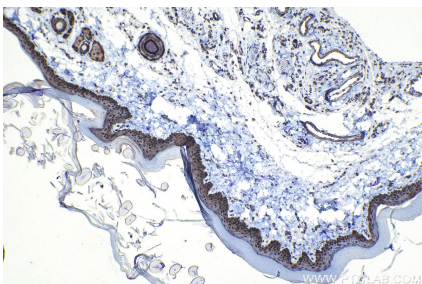
Immunohistochemical analysis of paraffin-embedded human prostate cancer tissue slide using KHC1107 (ELAC2 IHC Kit).



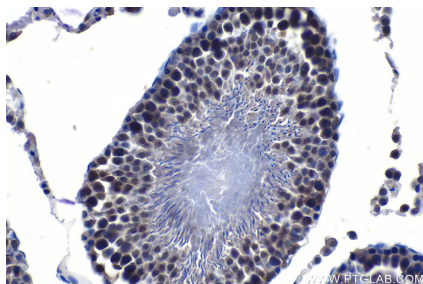
Immunohistochemical analysis of paraffin-embedded mouse skin tissue slide using KHC1107 (ELAC2 IHC Kit).



Immunohistochemical analysis of paraffin-embedded mouse testis tissue slide using KHC1107 (ELAC2 IHC Kit).



Immunohistochemical analysis of paraffin-embedded rat skin tissue slide using KHC1107 (ELAC2 IHC Kit).



Immunohistochemical analysis of paraffin-embedded rat testis tissue slide using KHC1107 (ELAC2 IHC Kit).