

IHC*easy* DNAJB1 Ready-To-Use IHC Kit

Catalog Number: **KHC1128**

General Information

Sample type:
FFPE tissue

Cited sample type:

Reactivity:
Human, Mouse, Rat

Cited Reactivity:

Assay type:
Immunohistochemistry

Primary antibody type:
Rabbit Polyclonal

Secondary antibody type:
Polymer-HRP-Goat anti-Rabbit

Kit Component

Component	Size	Concentration
Antigen Retrieval Buffer	100 mL	50×
Washing Buffer	100 mL ×2	20×
Blocking Buffer	5 mL	RTU
Primary Antibody	5 mL	RTU
Secondary Antibody	5 mL	RTU
Chromogen Component A	0.2 mL	RTU
Chromogen Component B	4 mL	RTU
Signal Enhancer	5 mL	RTU
Counter Staining Reagent	5 mL	RTU
Mounting Media	5 mL	RTU
Control Slide	1 slide (Optional)	FFPE
Datasheet	1 Copy	
Manual	1 Copy	

Storage Instructions

All the reagents are stored at 2-8°C. The kit is stable for 6 months from the date of receipt.

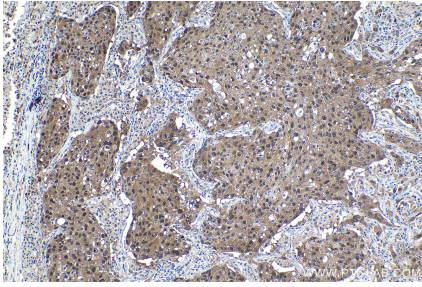
Background

DNAJB1 is a member of the heat shock 40 protein family and has been involved in a variety of cellular processes, including the proteasome pathway, endoplasmic reticulum stress and viral infection. DNAJB1-PRKACA gene fusions have been considered diagnostic for fibrolamellar hepatocellular carcinoma.

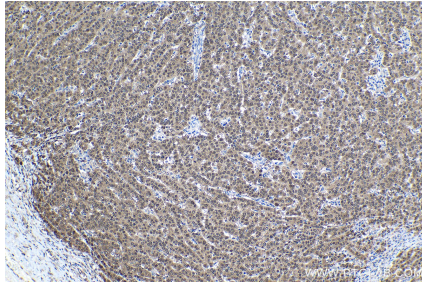
Synonyms

DnaJ protein homolog 1, DNAJ1, DNAJB1, hDj 1, Hdj1, Heat shock 40 kDa protein 1, Heat shock protein 40, Hsp40, HSPF1, Human DnaJ protein 1, Sis1

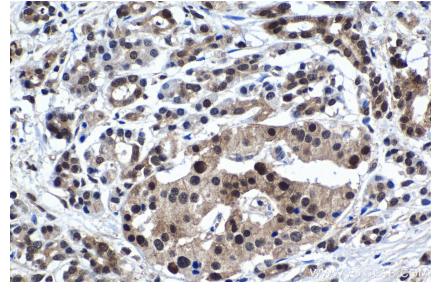
Selected Validation Data



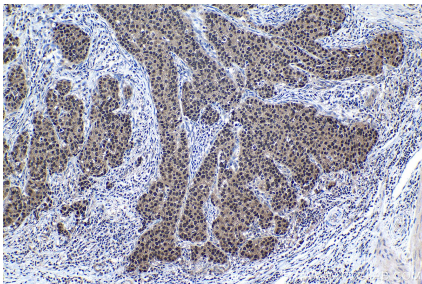
Immunohistochemical analysis of paraffin-embedded human lung cancer tissue slide using KHC1128 (DNAJB1 IHC Kit).



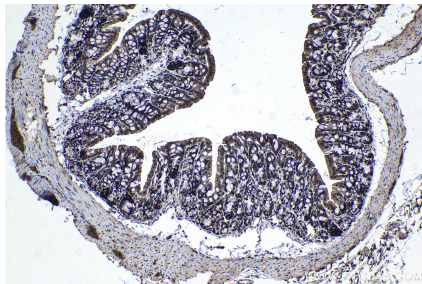
Immunohistochemical analysis of paraffin-embedded human ovary tumor tissue slide using KHC1128 (DNAJB1 IHC Kit).



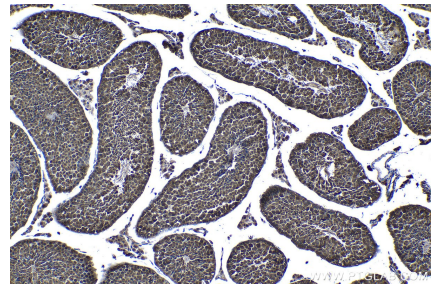
Immunohistochemical analysis of paraffin-embedded human pancreas cancer tissue slide using KHC1128 (DNAJB1 IHC Kit).



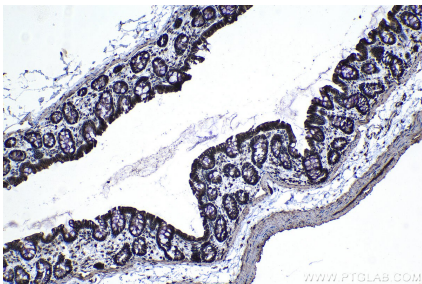
Immunohistochemical analysis of paraffin-embedded human stomach cancer tissue slide using KHC1128 (DNAJB1 IHC Kit).



Immunohistochemical analysis of paraffin-embedded mouse colon tissue slide using KHC1128 (DNAJB1 IHC Kit).



Immunohistochemical analysis of paraffin-embedded mouse testis tissue slide using KHC1128 (DNAJB1 IHC Kit).



Immunohistochemical analysis of paraffin-embedded rat colon tissue slide using KHC1128 (DNAJB1 IHC Kit).